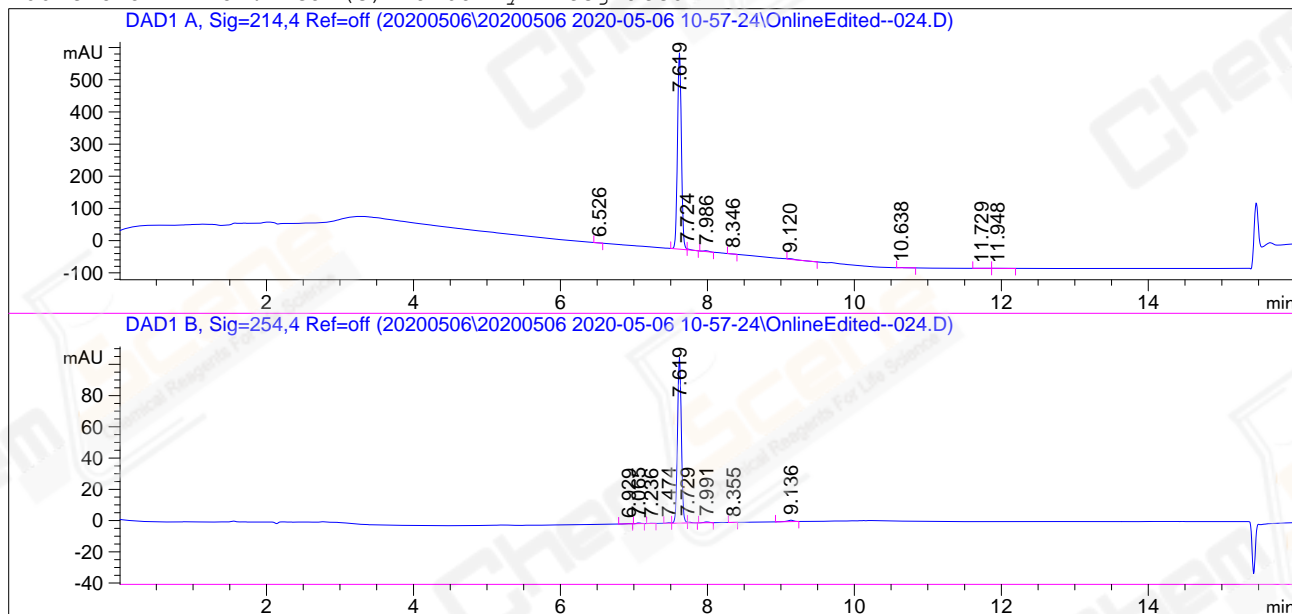


```

=====
Acq. Operator   : JLW_1433                      Seq. Line :   24
Acq. Instrument : HPLC-13                      Location  :   53
Injection Date  : 5/6/2020 5:28:18 PM          Inj       :    1
                                           Inj Volume: 5.000 µl
Different Inj Volume from Sample Entry! Actual Inj Volume : 1.000 µl
Acq. Method    : C:\Chem32\1\Data\20200506\20200506 2020-05-06 10-57-24\10-90A 214NM.M
Last changed   : 5/6/2020 10:57:24 AM by JLW_1433
Analysis Method: C:\Chem32\1\Data\20200506\20200506 2020-05-06 10-57-24\10-90A 214NM.M (
Sequence Method)
Last changed   : 5/6/2020 4:23:52 PM by JLW_1433
                                           after loading)
CAS NO.        : 50-84-0                      A-RP-519
  
```

Additional Info : Peak(s) manually integrated



Area Percent Report

```

Sorted By      : Signal
Multiplier     : 1.0000
Dilution      : 1.0000
Do not use Multiplier & Dilution Factor with ISTDs
  
```

Signal 1: DAD1 A, Sig=214,4 Ref=off

Peak #	RetTime [min]	Type	Width [min]	Area [mAU*s]	Height [mAU]	Area %
1	6.526	MM	0.0585	1.78330	5.08044e-1	0.0769
2	7.619	MF	0.0618	2267.88110	611.58295	97.8150
3	7.724	FM	0.0410	7.65690	3.11153	0.3302
4	7.986	MM	0.0820	13.59007	2.76257	0.5861
5	8.346	MM	0.0642	2.43465	6.31627e-1	0.1050
6	9.120	VB	0.1047	16.74174	2.30517	0.7221
7	10.638	BB	0.0602	2.51678	6.35662e-1	0.1086
8	11.729	BV	0.0955	3.53154	5.45550e-1	0.1523
9	11.948	VB	0.1179	2.40472	3.05200e-1	0.1037

Totals : 2318.54081 622.38830

Signal 2: DAD1 B, Sig=254,4 Ref=off

Peak #	RetTime [min]	Type	Width [min]	Area [mAU*s]	Height [mAU]	Area %
1	6.929	BB	0.0661	4.85059e-1	1.12888e-1	0.1205
2	7.065	BB	0.0584	1.75298	4.81844e-1	0.4353
3	7.236	BB	0.0534	4.14810e-1	1.22920e-1	0.1030
4	7.474	BV	0.0547	1.49321	4.28117e-1	0.3708
5	7.619	MF R	0.0611	389.49976	106.24756	96.7276
6	7.729	FM R	0.0484	1.50318	5.18053e-1	0.3733
7	7.991	BB	0.0712	2.28541	5.01510e-1	0.5676
8	8.355	BB	0.0578	4.04310e-1	1.12759e-1	0.1004
9	9.136	BB	0.0808	4.83829	8.71673e-1	1.2015

Totals : 402.67701 109.39732

=====  
\*\*\* End of Report \*\*\*