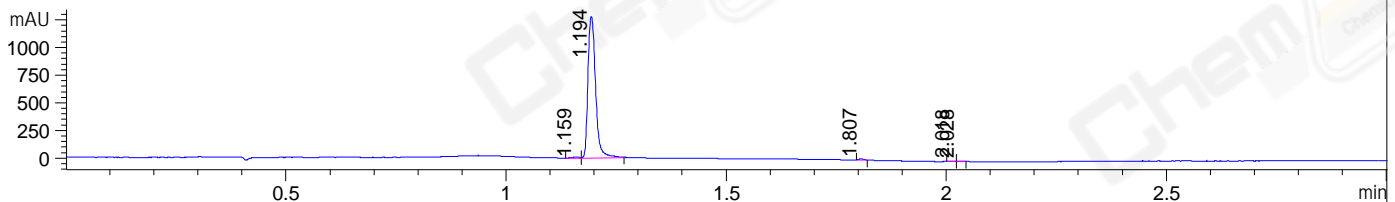
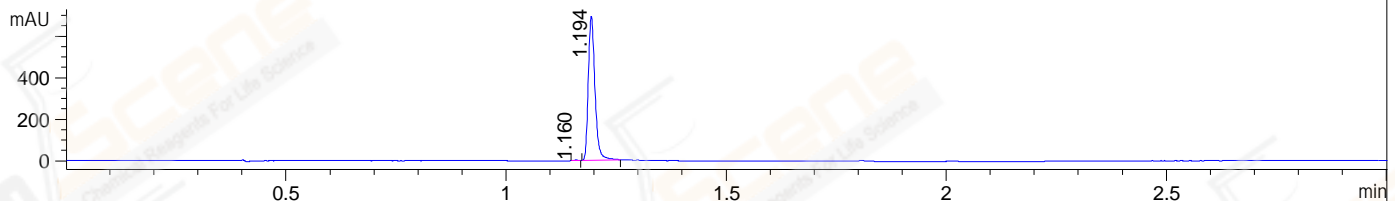


File ..\DATA\2021\20210514\1388\BIZ2021-514-WLQ5.D Tgt Mass (CHM):
 Injection Date : 14 May 21 7:55 pm +0800 Seq. Line : 34
 Sample Name : BIZ2021-514-WLQ5 Location : P1-C-02
 Acq. Operator : yrz_1364 Inj : 1
 Spec. Reported : MS Integration Inj Volume : 1 ul
 Acq. Method : D:\Chem32\1\data\2021\20210514\1388\1-POS-3MIN.M
 Analysis Method : D:\CHEM32\1\DATA\2021\20210514\1388\1-POS-3MIN.M
 CAS NO. : 23094-71-5
 Method Info : Mobile Phase: A: water(0.01%TFA) B:ACN(0.01%TFA)
 Gradient: 5% to 95%B within 1.3 min
 Flow Rate :1.8ml/min
 Column :SunFire C18, 4.6*50mm,3.5um A-RP-698

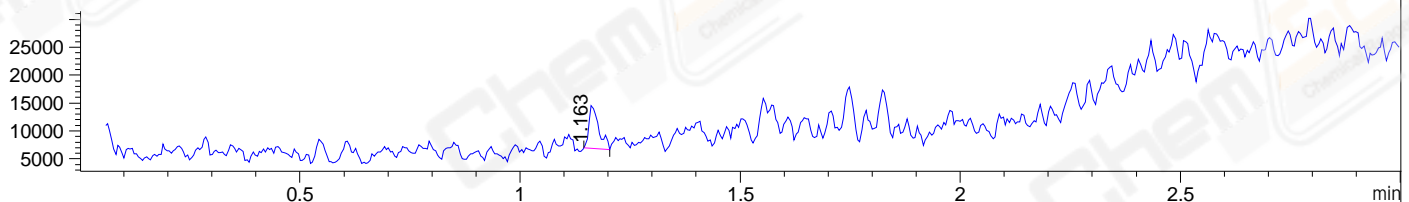
DAD1 B, Sig=214,4 Ref=off



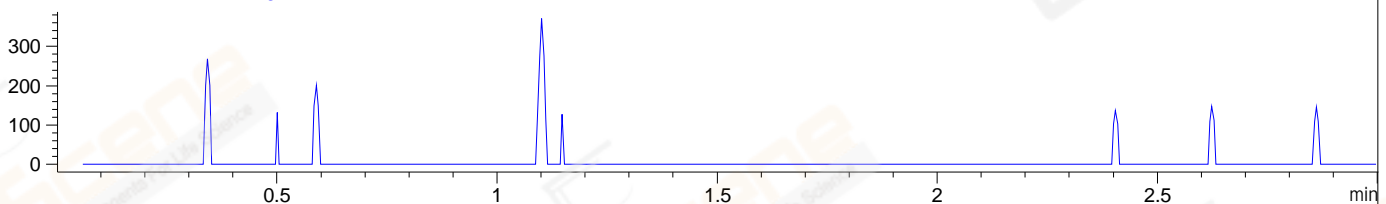
DAD1 C, Sig=254,4 Ref=off



MSD1 TIC, MS File ES-API, Pos, Scan, Frag: 70



Ion 955, MSD1 955, Target Mass 954 +H Positive, EIC=954.7:955.7



Integration Results for DAD1 B, Sig=214,4 Ref=off

RetTim	Width	Area	Height	Area%	MS(+)
1.16	0.02	9.44	8.64	0.61	ND
1.19	0.02	1533.91	1280.06	98.41	ND
1.81	0.01	7.43	8.59	0.48	ND
2.02	0.02	4.68	4.50	0.30	ND
2.03	0.01	3.21	4.29	0.21	ND

Integration Results for DAD1 C, Sig=254,4 Ref=off

RetTim	Width	Area	Height	Area%	MS(+)
1.16	0.01	1.74	2.13	0.24	ND
1.19	0.02	729.33	694.02	99.76	785

Integration Results for MSD1 TIC, MS File

RetTim	Width	Area	Height	Area%	MS(+)
1.16	0.02	11915.37	7797.18	100.00	ND