

Single Injection Report



Agilent Technologies

Catalog No: CS-W004546

Path: /LY-202005/Results/20200529_1.rslt

Sequence Name: 20200529_1

Project Name: LY-202005

Sample name: LJC2005282539

Operator: jlw_1433

Instrument: LC-03

Injection date: 2020-05-29 16:54:47+08:00

Inj. volume: 1.000

Location: P2-D10

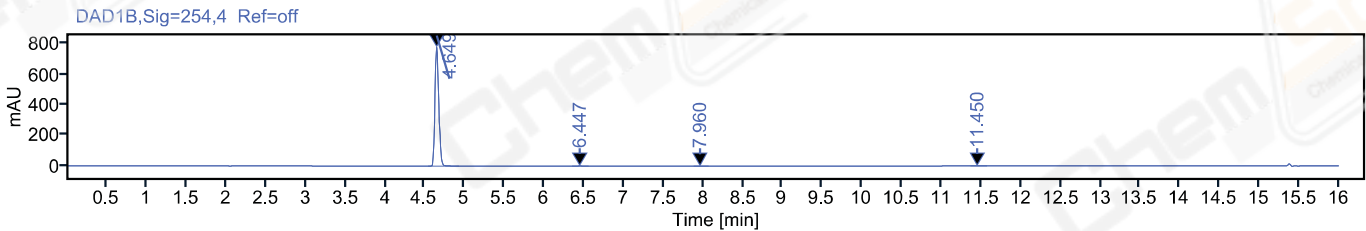
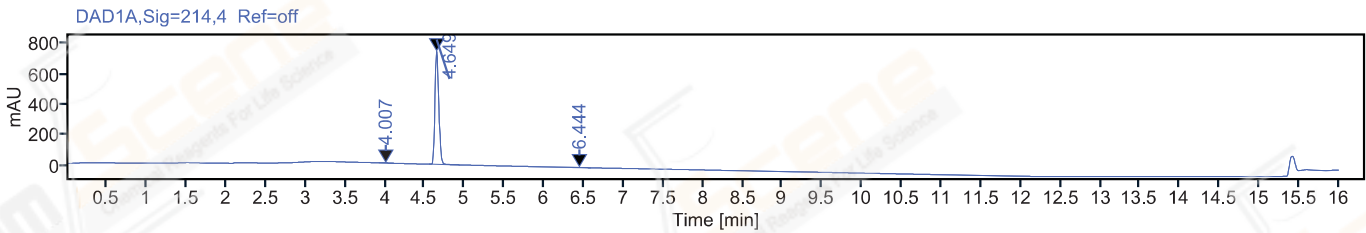
Acq. method: 10-90A 214NM,C1.amx

Type: Sample

Description: 1053534-2020052803800 A-RP-519

Data File: 2020-05-29 16-53-57+08-00-06.dx

Manually modified: Manual Integration



Signal: DAD1A, Sig=214,4 Ref=off

| RT [min] | Type | Width [min] | Area | Height | Area% | Resolution | EP |
|----------|------|-------------|---------|--------|-------|------------|-------|
| 4.007 | MM m | 0.05 | 5.23 | 1.60 | 0.21 | | |
| 4.649 | MM m | 0.05 | 2533.26 | 741.79 | 99.52 | | 4.59 |
| 6.444 | MM m | 0.06 | 6.87 | 1.71 | 0.27 | | 18.04 |
| | Sum | | 2545.36 | | | | |

Signal: DAD1B, Sig=254,4 Ref=off

| RT [min] | Type | Width [min] | Area | Height | Area% | Resolution | EP |
|----------|------|-------------|---------|--------|-------|------------|-------|
| 4.649 | MM m | 0.05 | 2659.22 | 780.43 | 99.78 | | |
| 6.447 | MM m | 0.06 | 4.56 | 1.27 | 0.17 | | 19.05 |
| 7.960 | MM m | 0.06 | 0.55 | 0.15 | 0.02 | | 15.42 |
| 11.450 | MM m | 0.06 | 0.68 | 0.16 | 0.03 | | 32.64 |
| | Sum | | 2665.01 | | | | |