

=====

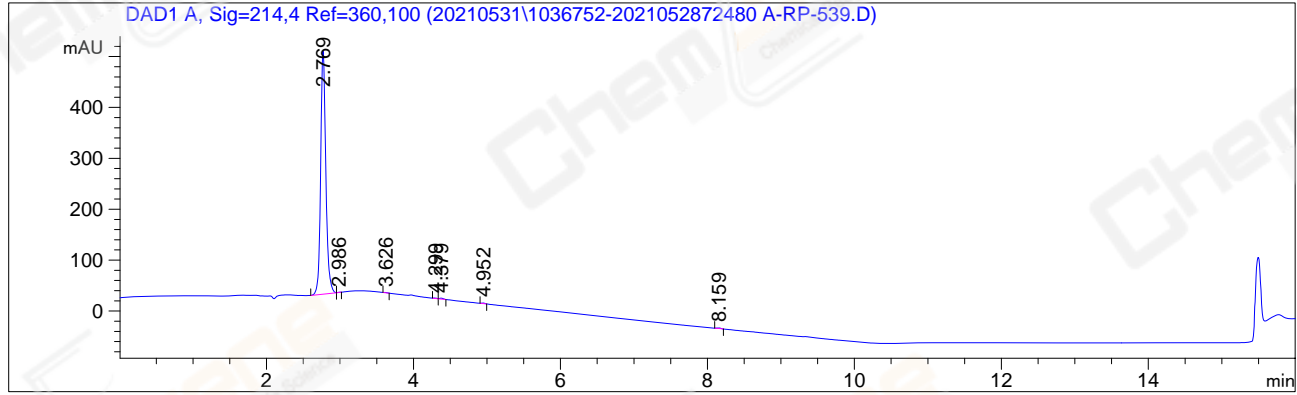
Acq. Operator : LY_1447	Seq. Line : 33
Acq. Instrument : LC-03	Location : P1-C-08
Injection Date : 5/31/2021 11:14:03 PM	Inj : 1
	Inj Volume : 5.000 µl

Different Inj Volume from Sample Entry! Actual Inj Volume : 2.000 µl

Acq. Method : D:\CHEM32\1\METHODS\10-90A 214NM.M
Last changed : 5/14/2021 12:38:35 PM by LS_2312
Analysis Method : D:\Chem32\1\Methods\WASH 2-1.M
Last changed : 6/1/2021 1:00:03 PM by LS_2312

(modified after loading)

Additional Info : Peak(s) manually integrated



=====
Area Percent Report
=====

Sorted By : Signal
Multiplier : 1.0000
Dilution : 1.0000
Do not use Multiplier & Dilution Factor with ISTDs

Signal 1: DAD1 A, Sig=214,4 Ref=360,100

Peak #	RetTime [min]	Type	Width [min]	Area [mAU*s]	Height [mAU]	Area %
1	2.769	MF	0.0808	2332.95825	481.40042	99.2378
2	2.986	FM	0.0469	1.09784	3.90170e-1	0.0467
3	3.626	MM	0.0485	1.56874	5.39090e-1	0.0667
4	4.299	MF	0.0554	2.19009	6.58279e-1	0.0932
5	4.379	FM	0.0555	6.12384	1.83878	0.2605
6	4.952	MM	0.0457	3.04333	1.11053	0.1295
7	8.159	MM	0.0543	3.89402	1.19515	0.1656

Totals : 2350.87610 487.13243

=====
*** End of Report ***
=====