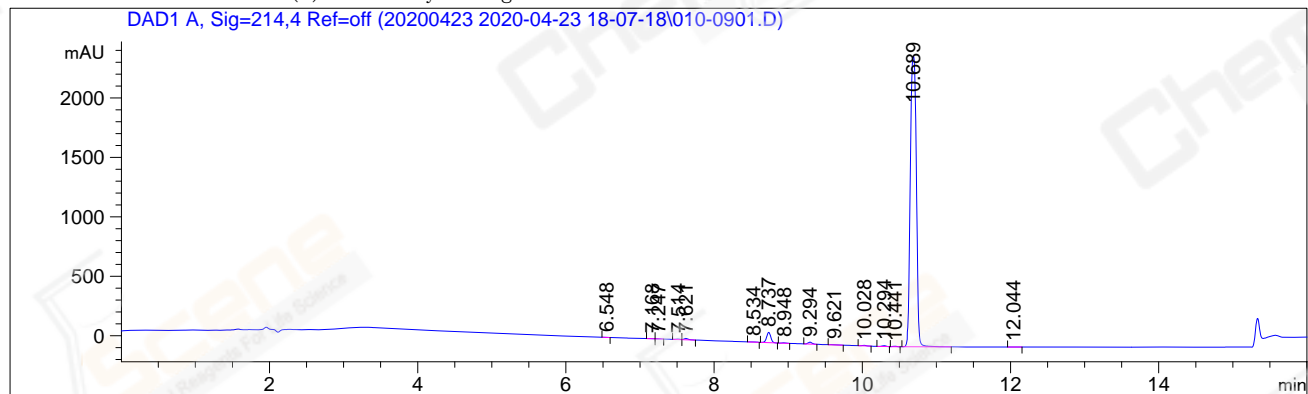


```
=====
Acq. Operator   : JLW_1433                Seq. Line :    9
Acq. Instrument : HPLC-13                 Location  :   10
Injection Date  : 2020/4/23 20:23:31      Inj       :    1
                                           Inj Volume: 5.000 µl
                                           Actual Inj Volume: 2.000 µl
Different Inj Volume from Sequence !
Acq. Method     : C:\Chem32\1\Data\20200423 2020-04-23 18-07-18\10-90A 214NM.M
Last changed    : 2020/4/23 18:07:18 : JLW_1433
Analysis Method : C:\Chem32\1\Data\20200423 2020-04-23 18-07-18\10-90A 214NM.M
Last changed    : 2020/4/24 9:51:43 : JLW_1433
=====
```

Catalog No : CS-W006416 A-RP-519

Additional Info : Peak(s) manually integrated



Area Percent Report

```
Sorted By      :      Signal
Multiplier     :      1.0000
Dilution       :      1.0000
Use Multiplier & Dilution Factor with ISTDs
```

Signal 1: DAD1 A, Sig=214,4 Ref=off

Peak #	RetTime [min]	Type	Width [min]	Area [mAU*s]	Height [mAU]	Area %
1	6.548	MM	0.0550	3.29619	9.98821e-1	0.0229
2	7.168	MF	0.0600	4.51692	1.25454	0.0314
3	7.247	FM	0.0540	8.51518	2.63014	0.0592
4	7.514	MF	0.0630	12.62291	3.34162	0.0877
5	7.621	FM	0.0658	41.82341	10.59308	0.2907
6	8.534	MM	0.0739	9.25470	2.08675	0.0643
7	8.737	MM	0.0648	338.71155	87.13660	2.3544
8	8.948	MM	0.0609	13.89972	3.80286	0.0966
9	9.294	MM	0.0655	63.98649	16.27486	0.4448
10	9.621	MM	0.0766	13.28015	2.88902	0.0923
11	10.028	MM	0.0616	18.10135	4.89496	0.1258
12	10.294	MM	0.0626	27.15618	7.22982	0.1888
13	10.441	MM	0.0587	14.91177	4.23106	0.1037
14	10.689	MM	0.0941	1.38096e4	2445.26831	95.9913
15	12.044	MM	0.0919	6.63602	1.20373	0.0461

Totals : 1.43864e4 2593.83616

*** End of Report**