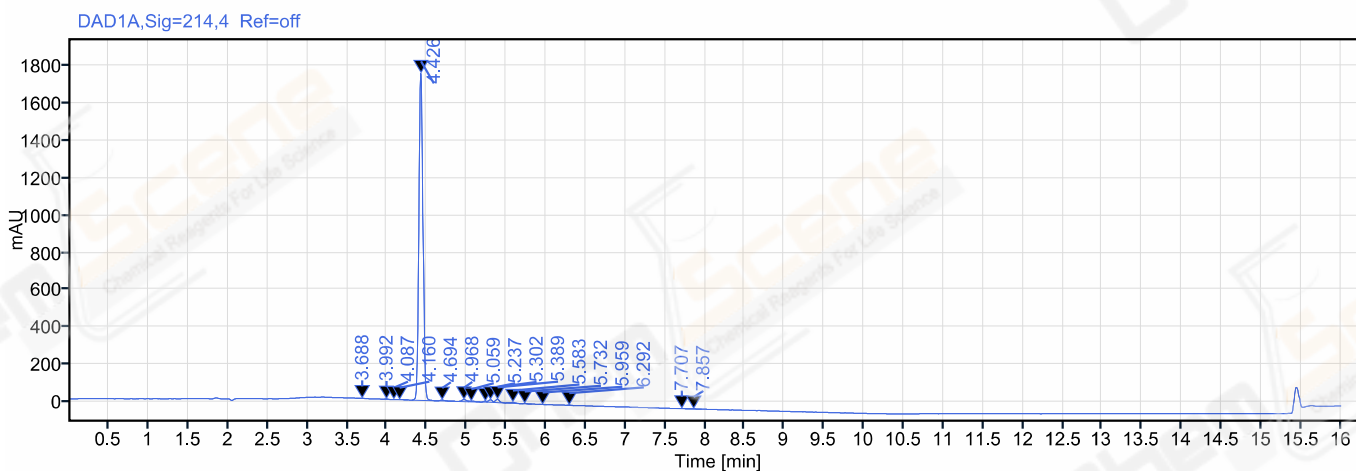


**Path:** /LY-202010/Results/20201027.rslt **CAS NO.:** 3131-52-0  
**Sequence Name:** 20201027 **Project Name:** LY-202010  
**Sample name:** LJC202010270064 **Operator:** ws\_1714  
**Instrument:** LC-03 **Injection date:** 2020-10-28 00:31:20+08:00  
**Inj. volume:** 2.000 **Location:** P2-E4  
**Acq. method:** 10-90A 214NM,C2.amx **Type:** Sample  
**Manually modified:** Manual Integration **Data File:** 2020-10-28 00-30-32+08-00-27.dx



Signal: DAD1A,Sig=214,4 Ref=off

RT [min]	Type	Width [min]	Area	Height	Area%	Resolution EP
3.688	MM m	0.04	3.54	1.38	0.05	
3.992	MM m	0.04	5.71	2.23	0.09	3.71952
4.087	MM m	0.04	2.48	0.92	0.04	1.28711
4.160	MM m	0.06	6.74	1.35	0.10	0.74739
4.426	BV	0.33	6348.27	1758.68	95.94	2.37366
4.694	VB	0.21	21.40	4.95	0.32	2.64124
4.968	BM m	0.06	39.83	10.34	0.60	2.66572
5.059	MB m	0.09	19.89	3.71	0.30	0.69350
5.237	BV	0.07	14.62	5.42	0.22	1.83273
5.302	VV	0.09	47.50	14.08	0.72	0.67524
5.389	VB	0.14	61.36	18.00	0.93	0.93376
5.583	MB m	0.07	23.88	5.26	0.36	1.95251
5.732	BB	0.13	7.38	2.14	0.11	1.36901
5.959	MM m	0.04	0.74	0.34	0.01	2.35336

RT [min]	Type	Width [min]	Area	Height	Area%	Resolution EP
6.292	VM m	0.05	5.38	1.86	0.08	3.93423
7.707	MM m	0.07	5.60	1.17	0.08	13.01387
7.857	MM m	0.04	2.35	0.86	0.04	1.16328
		Sum	6616.66			