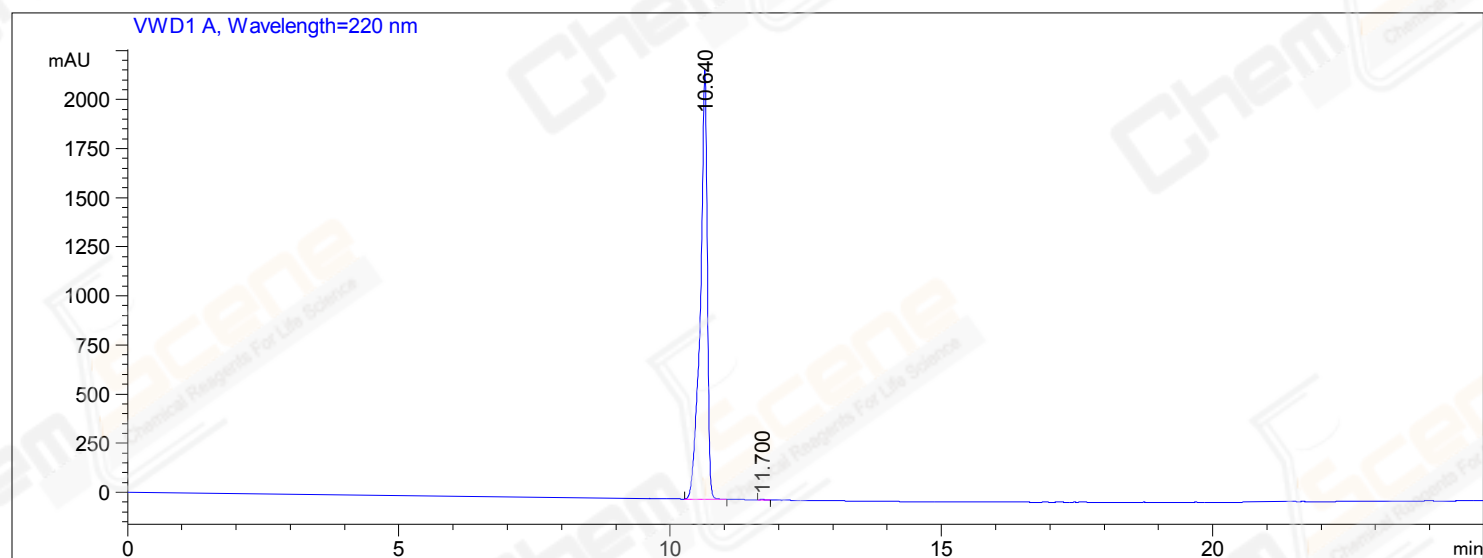


```

=====
Acq. Operator   : Z
Acq. Instrument : ! 1                               Location : Vial 1
Acq. Method    : C:\CHEM32\1\METHODS\DEF_LC.M
CAS NO.        : 348622-88-8
Analysis Method : C:\CHEM32\1\METHODS\DEF_LC.M
=====

```



```

=====
                          Area Percent Report
=====

```

```

Sorted By      :      Signal
Multiplier:    :      1.0000
Dilution:      :      1.0000
Use Multiplier & Dilution Factor with ISTDs

```

Signal 1: VWD1 A, Wavelength=220 nm

Peak #	RetTime [min]	Type	Width [min]	Area mAU *s	Height [mAU]	Area %
1	10.640	BB	0.1294	1.96009e4	2184.69653	99.9170
2	11.700	BB	0.0989	16.28333	2.46391	0.0830

```
Totals :                1.96172e4  2187.16044
```

```

=====
*** End of Report ***
=====

```