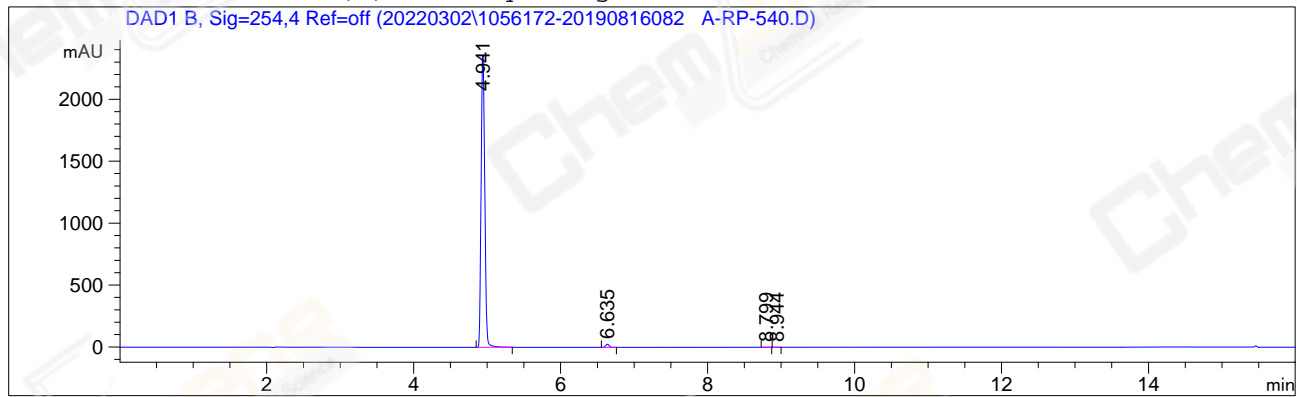


=====  
Acq. Operator : jlw\_1433 Seq. Line : 15  
Acq. Instrument : LC-03 Location : P1-F-05  
Injection Date : 3/2/2022 8:35:26 PM Inj : 1  
Inj Volume : 5.000 µl  
Different Inj Volume from Sample Entry! Actual Inj Volume : 2.000 µl  
Acq. Method : D:\CHEM32\1\METHODS\10-90A.M  
Last changed : 3/1/2022 4:36:25 PM by jlw\_1433  
Analysis Method : D:\CHEM32\1\METHODS\HM-964B\_6-H01P01(RP-HPLC).M  
Last changed : 3/3/2022 9:28:42 AM by jlw\_1433  
(modified after loading)  
Additional Info : Peak(s) manually integrated



=====  
Area Percent Report  
=====

Sorted By : Signal  
Multiplier : 1.0000  
Dilution : 1.0000  
Do not use Multiplier & Dilution Factor with ISTDs

Signal 1: DAD1 B, Sig=254,4 Ref=off

Peak #	RetTime [min]	Type	Width [min]	Area [mAU*s]	Height [mAU]	Area %
1	4.941	MM	0.0572	8170.10889	2379.46094	98.9607
2	6.635	MM	0.0546	82.47058	25.19260	0.9989
3	8.799	MM	0.0602	2.53262	7.01489e-1	0.0307
4	8.944	MM	0.0583	8.03763e-1	2.29895e-1	9.736e-3

Totals : 8255.91585 2405.58493

=====  
\*\*\* End of Report \*\*\*  
=====