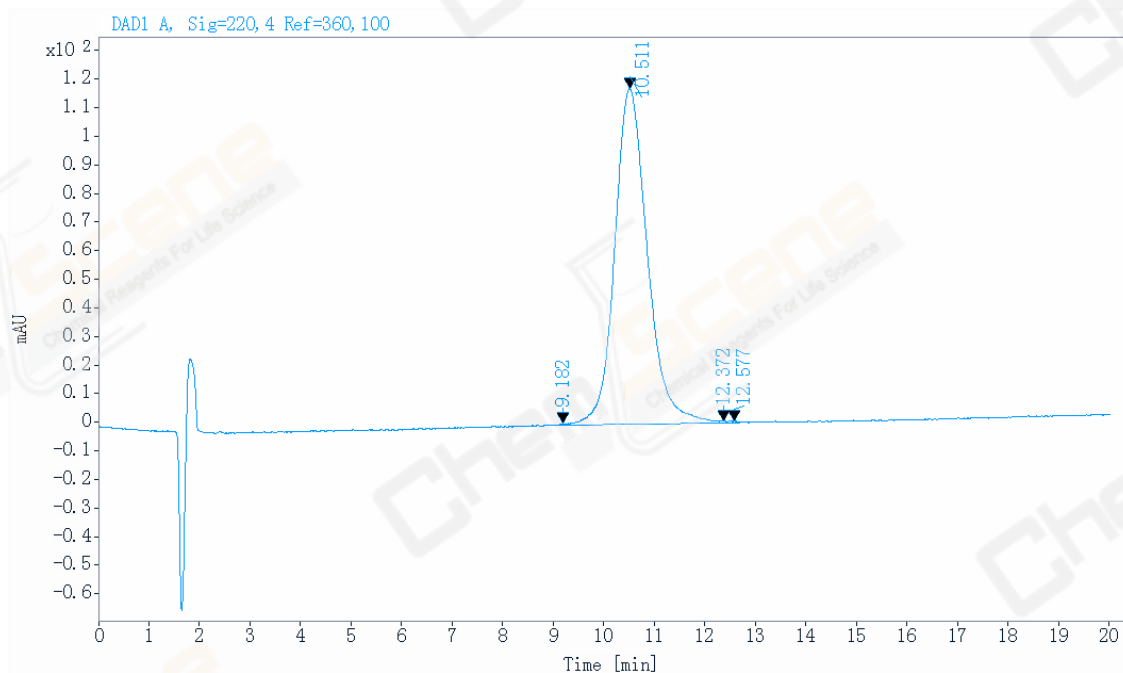


Data file: D:\CHEM32\1\DATA\211103\800072_21100070Final.D
 Product Name: LL-37, human (TFA)
 Description: Mobile phase: Buffer A: 0.1%TFA in H2O
 Buffer B: 0.1%TFA in H2O
 Gradient: 40-50% B in 20min, Flow rate: 1ml/min
 Column: Uni tary C18, 4.6*150mm, 5um 100A
 Instrument: Agilent HPLC 1100
 Instrument: 1100 Location: 63
 Injection date: 2021/11/3 10:42:40 Injection: 1 of 1
 Last changed: 2021/11/3 16:01:40 Injection volume: 10.000
 Acq. operator: SYSTEM



Signal: DAD1 A, Sig=220, 4 Ref=360, 100

RT [min]	Type	Width [min]	Area	Height	Area%	Name
9.182	BV	0.0632	2.3603	0.5380	0.0446	
10.511	WV	0.6933	5280.3926	117.2795	99.7158	
12.372	WV	0.1081	6.0024	0.7953	0.1134	
12.577	WV	0.1647	6.6844	0.5108	0.1262	
Sum			5295.4397			