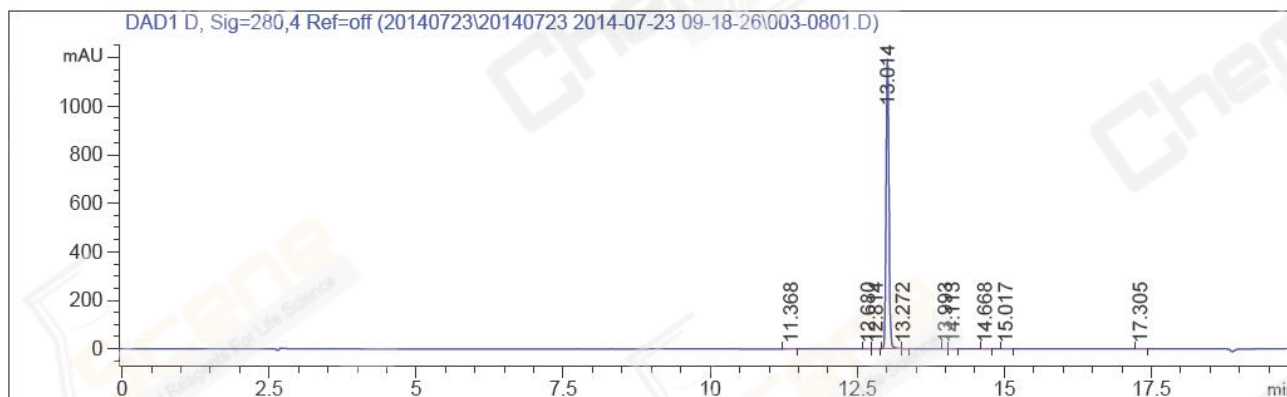


=====
Acq. Operator : YP(HPLC-06) Seq. Line : 8
Acq. Instrument : Instrument 1 Location : Vial 3
Injection Date : 7/23/2014 10:56:58 AM Inj : 1
Inj Volume : 5 µl
Acq. Method : D:\AGILENT CHEM32\DATA\20140723\20140723 2014-07-23 09-18-26\HY-303_21-RS,
C2.M
Last changed : 7/4/2014 3:50:46 PM by YP(HPLC-06)
Analysis Method : D:\AGILENT CHEM32\METHODS\HM-297C_22-C129P.M
Last changed : 7/23/2014 11:29:26 AM by YP(HPLC-06)
(modified after loading)
Catalog No : CS-1406 Batch#12504
A-RP-76
=====



=====
Area Percent Report
=====

Sorted By : Signal
Multiplier: : 1.0000
Dilution: : 1.0000
Use Multiplier & Dilution Factor with ISTDs

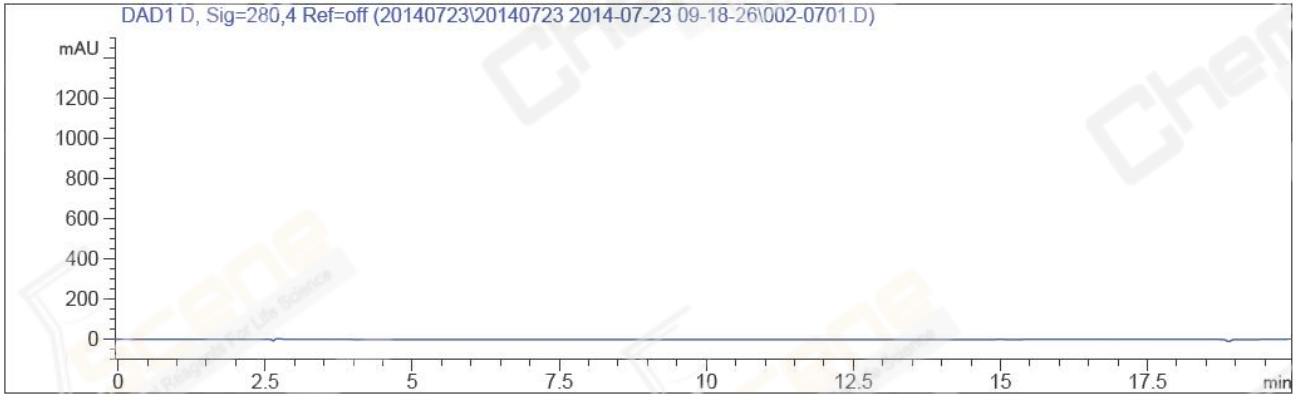
Signal 1: DAD1 D, Sig=280,4 Ref=off

Peak #	RetTime [min]	Type	Width [min]	Area [mAU*s]	Height [mAU]	Area %
1	11.368	MM R	0.2051	7.50465e-1	1.07129e-1	0.0186
2	12.680	FM R	0.0695	9.45150e-1	2.34257e-1	0.0234
3	12.814	VV	0.0535	3.06291	9.04564e-1	0.0760
4	13.014	MF R	0.0664	4019.82886	1198.35144	99.6831
5	13.272	FM R	26.1294	2.81360	7.30757e-1	0.0698
6	13.993	BV	0.0497	7.97892e-1	2.47009e-1	0.0198
7	14.113	VB	0.0569	1.75909	4.78645e-1	0.0436
8	14.668	BB	0.0592	6.61625e-1	1.78524e-1	0.0164
9	15.017	BB	0.0738	8.60491e-1	1.86454e-1	0.0213
10	17.305	BB	0.0812	1.12851	2.15065e-1	0.0280

Totals : 4032.60859 1201.63384

=====
*** End of Report ***
=====

```
=====
Acq. Operator   : YP(HPLC-06)                Seq. Line :    7
Acq. Instrument : Instrument 1                Location  : Vial 2
Injection Date  : 7/23/2014 10:33:25 AM      Inj       :    1
                                           Inj Volume: 5 µl
Acq. Method     : D:\AGILENT CHEM32\DATA\20140723\20140723 2014-07-23 09-18-26\HY-303_21-RS,
                  C2.M
Last changed    : 7/4/2014 3:50:46 PM by YP(HPLC-06)
Analysis Method : D:\AGILENT CHEM32\METHODS\HM-297C_22-C129P.M
Last changed    : 7/23/2014 11:31:13 AM by YP(HPLC-06)
                  (modified after loading)
Catalog No     : CS-1406 Batch#12504 (BLANK)
                  A-RP-76
=====
```



```
=====
                          Area Percent Report
=====
```

```
Sorted By           :      Signal
Multiplier:         :      1.0000
Dilution:           :      1.0000
Use Multiplier & Dilution Factor with ISTDs
```

No peaks found

```
=====
*** End of Report ***
=====
```