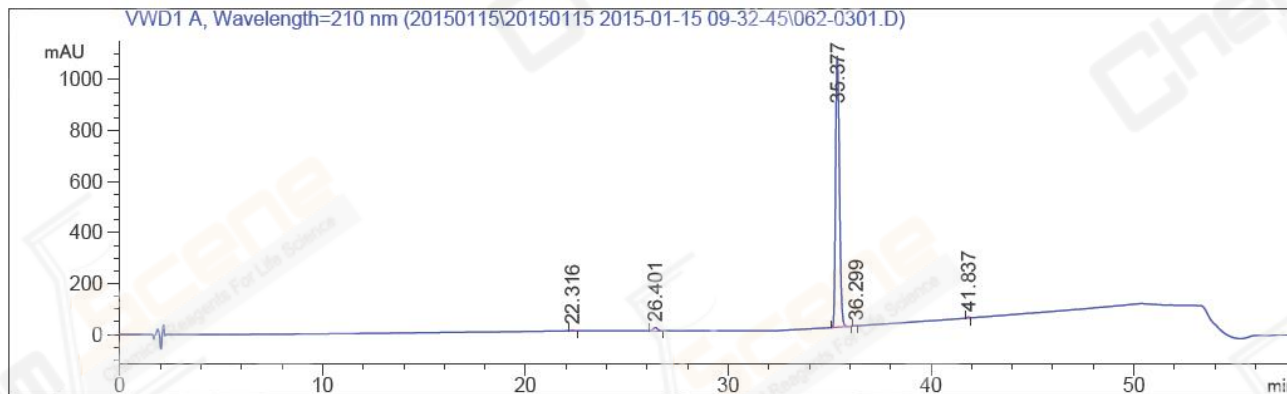


=====
Acq. Operator : KL(HPLC-03) Seq. Line : 3
Acq. Instrument : Instrument 1 Location : Vial 62
Injection Date : 1/15/2015 11:09:02 Inj : 1
Inj Volume : 5 µl
Acq. Method : D:\DATA\20150115\20150115 2015-01-15 09-32-45\HM-356_15-H01RS16 (RP-HPLC),
210NM.M
Last changed : 1/13/2015 10:07:35 by KL(HPLC-03)
Analysis Method : D:\METHODS\HM-135_6-H01P (RP-HPLC).M
Last changed : 1/15/2015 12:30:17 by KL(HPLC-03)
(modified after loading)
Method Info : by cosmocui
Catalog No : CS-2514 Batch#14829
A-RP-120
=====



=====
Area Percent Report
=====

Sorted By : Signal
Multiplier: : 1.0000
Dilution: : 1.0000
Use Multiplier & Dilution Factor with ISTDs

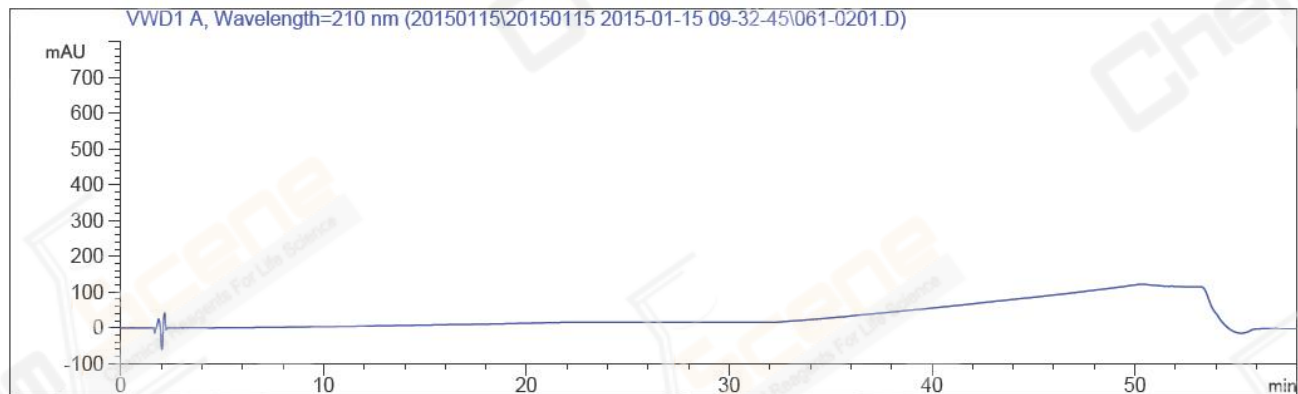
Signal 1: VWD1 A, Wavelength=210 nm

Peak #	RetTime [min]	Type	Width [min]	Area mAU *s	Height [mAU]	Area %
1	22.316	BB	0.1714	13.19080	1.17850	0.0918
2	26.401	BB	0.2276	183.44878	12.31602	1.2773
3	35.377	MM R	0.1947	1.41336e4	1062.49121	98.4122
4	36.299	MM R	0.2186	4.93747	3.76507e-1	0.0344
5	41.837	MM R	0.1061	26.45573	4.15686	0.1842

Totals : 1.43617e4 1080.51910

=====
*** End of Report ***
=====

```
=====
Acq. Operator   : KL(HPLC-03)                      Seq. Line :    2
Acq. Instrument : Instrument 1                      Location  : Vial 61
Injection Date  : 1/15/2015 10:04:40              Inj       :    1
                                                    Inj Volume: 5 µl
Acq. Method     : D:\DATA\20150115\20150115 2015-01-15 09-32-45\HM-356_15-H01RS16 (RP-HPLC),
                210NM.M
Last changed    : 1/13/2015 10:07:35 by KL(HPLC-03)
Analysis Method : D:\METHODS\HM-135_6-H01P (RP-HPLC).M
Last changed    : 1/15/2015 12:32:52 by KL(HPLC-03)
                (modified after loading)
Method Info     : by cosmocui
Catalog No      : CS-2514 Batch#14829
                A-RP-120
=====
```



```
=====
                          Area Percent Report
=====
```

```
Sorted By           :      Signal
Multiplier:         :      1.0000
Dilution:           :      1.0000
Use Multiplier & Dilution Factor with ISTDs
```

No peaks found

```
=====
*** End of Report ***
=====
```