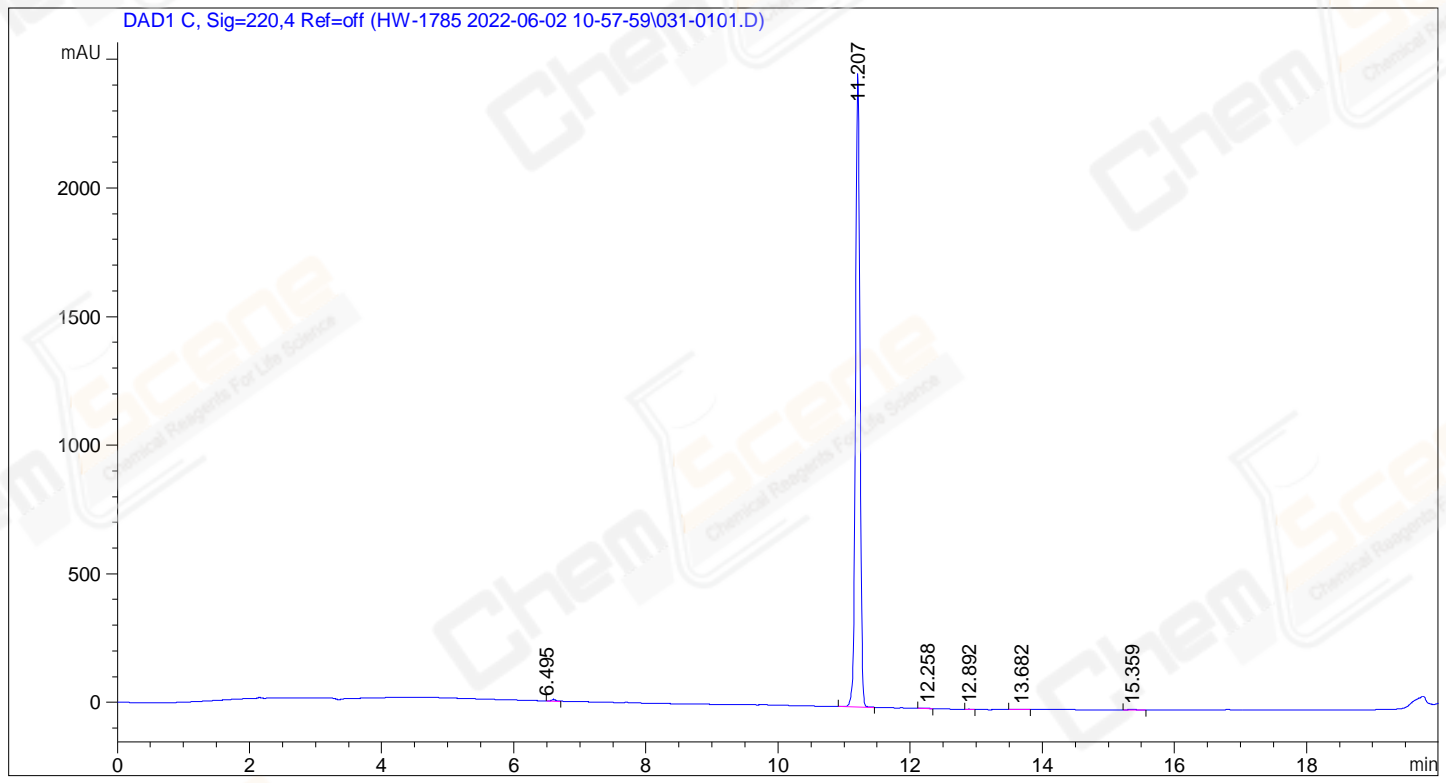


=====  
Acq. Operator : Seq. Line: 1  
Acq. Instrument : 1 Location : 31  
Injection Date : 2022/6/2 10:59:26 Inj : 1  
Inj Volume:10.000  
Acq. Method µl : D:\CHEM32\1\DATA\HW-1785 2022-06-02 10-57-59  
Last changed \HW1785.M : 2022/6/2 10:57:26  
Analysis Method : D:\CHEM32\1\METHODS\HW-1688.M  
Last changed : 2022/6/2 9:18:28  
(Sequence Method)  
Additional Info : Peak(s) manually integrated



=====  
Area Percent Report  
=====

Sorted By : Signal  
Multiplier : 1.0000  
Dilution : 1.0000  
Do not use Multiplier & Dilution Factor with ISTDs

Signal 1: DAD1 C, Sig=220,4 Ref=off

Peak #	RetTime [min]	Type	Width [min]	Area [mAU*s]	Height [mAU]	Area %
1	6.495	MM R	0.0744	37.04735	4.86758e-1	0.3181
2	11.207	MM R	0.0780	1.15741e4	2467.09888	99.3790
3	12.258	BB	0.0881	10.97635	1.72738	0.0942
4	12.892	BB	0.0618	5.74352	1.46406	0.0493
5	13.682	BB	0.1056	9.89842	1.26060	0.0850
6	15.359	BB	0.0915	8.66280	1.45445	0.0744

Totals:

1.16464e4 2473.49212

=====  
\*\*\* End of Report \*\*\*