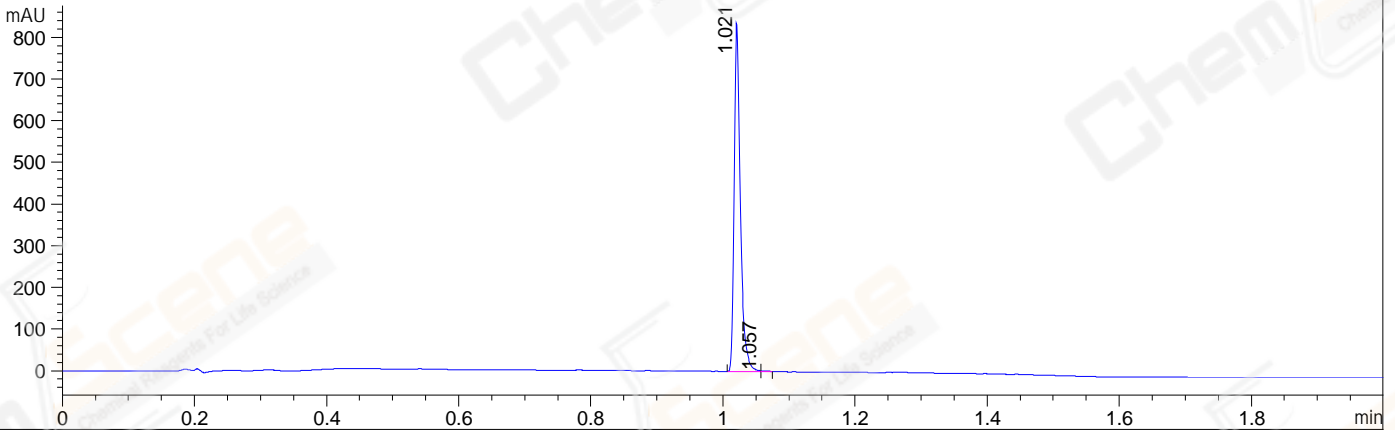
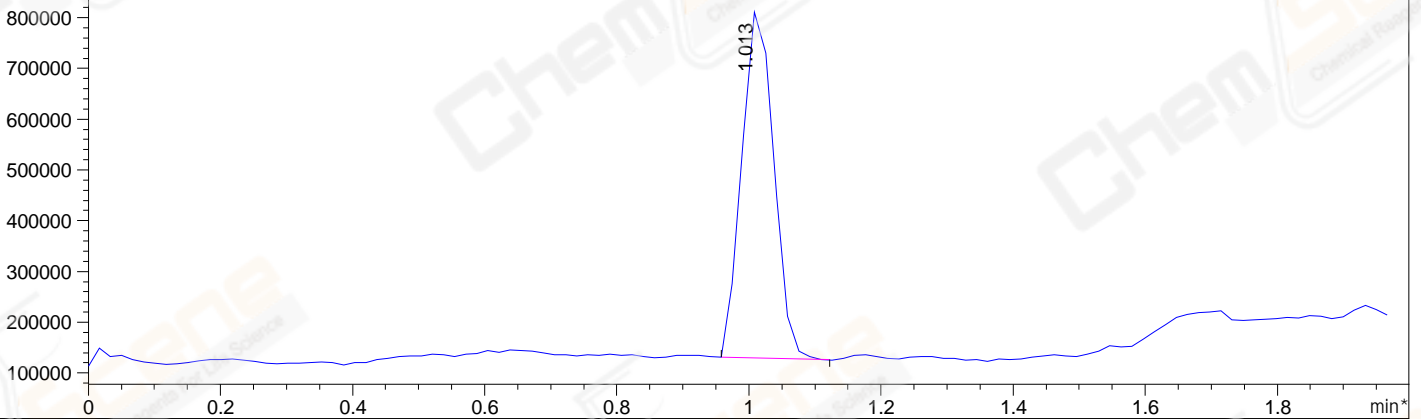


File ..-13\BIZ2022-610-SCH37-1-UPLC-MS-03-028493.D Tgt Mass (EZ):  
 Injection Date : 13-Jul-22, 15:37:36 Seq. Line : 0  
 Sample Name : BIZ2022-610-SCH37-1 Location : P2-C-08  
 Acq. Operator : LiYong Inj : 1  
 Spec. Reported : MS Integration Inj Volume : 0.5 ul  
 Acq. Method : E:\Chem32\1\Methods\1-POS-UPLC2.0MIN(0.8)-(0-2000).M  
 Analysis Method : E:\CHEM32\1\METHODS\1-POS-UPLC2.0MIN(0.8)-(0-2000).M  
 CAS NO. : 207572-68-7 WalkUp method: '1-POS-2MIN(0-2000)' Target:  
 Method Info : Mobile Phase: A: water(0.01%TFA) B:ACN(0.01%TFA)  
 Gradient: 5% to 95%B within 1.3 min  
 Flow Rate :0.8ml/min  
 Column :Poroshell 120 EC- C18, 2.1\*50mm,1.9um  
 Oven Temperature : 45C

DAD1 A, Sig=214,4 Ref=off



MSD1 TIC, MS File ES-API, Pos, Scan, Frag: 70



Integration Results for DAD1 A, Sig=214,4 Ref=off

RetTim	Width	Area	Height	Area%	MS(+)
1.02	0.01	548.04	846.26	99.78	477
1.06	0.01	1.22	1.79	0.22	477

Integration Results for MSD1 TIC, MS File

RetTim	Width	Area	Height	Area%	MS(+)
1.01	0.05	2312105.00	691597.25	100.00	477