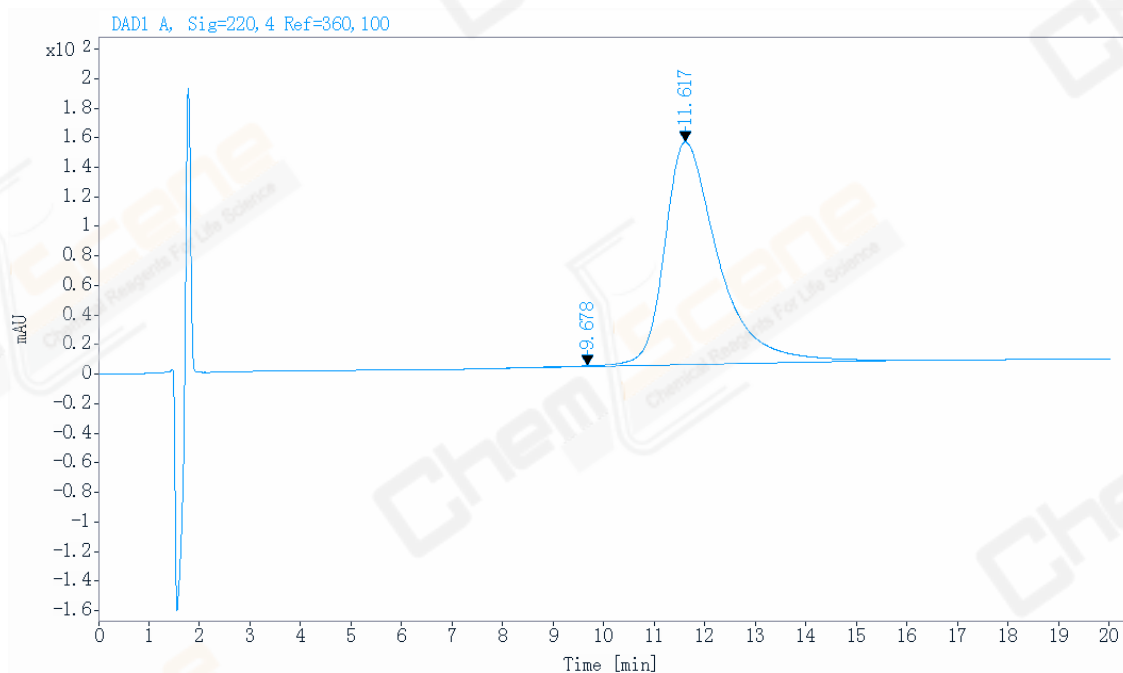


Data file: D:\CHEM32\1\DATA\220609\800072_22060014Final.D
 Product Name: LL-37, human (TFA)
 Description: Mobile phase: Buffer A: 0.1%TFA in H2O
 Buffer B: 0.1%TFA in ACN
 Gradient: 40-50% B in 20min, Flow rate: 1ml/min
 Column: Uni tary C18, 4. 6*150mm, 5um 100A
 Instrument: Agilent HPLC 1100
 Instrument: 1100
 Injection date: 2022/6/9 14: 12: 11
 Last changed: 2022/6/9 15: 42: 35
 Location: 4
 Injection: 1 of 1
 Injection volume: 20.000
 Acq. operator: SYSTEM



Signal: DAD1 A, Sig=220, 4 Ref=360, 100

RT [min]	Type	Width [min]	Area	Height	Area%	Name
9.678	MF	0.9645	43.7255	0.7556	0.3873	
11.617	FM	1.2416	11245.3281	150.9522	99.6127	
	Sum		11289.0536			