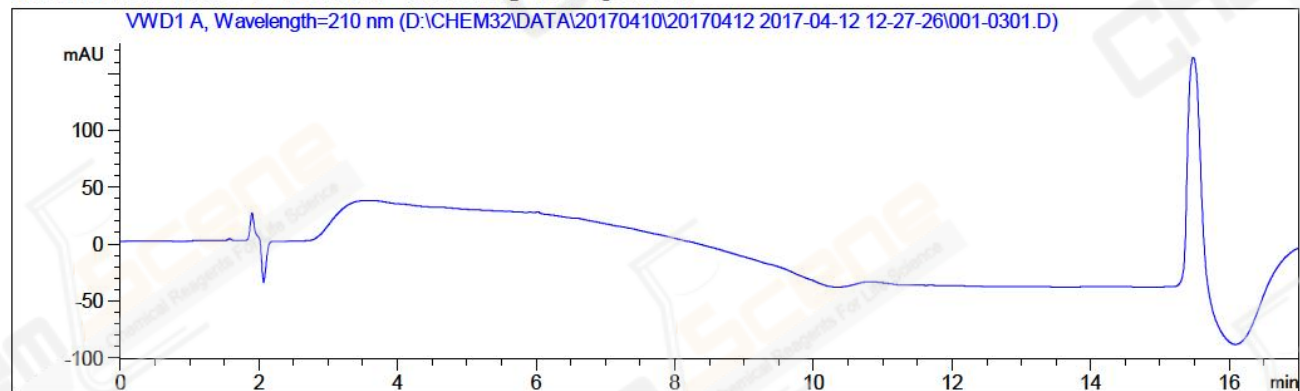


```
=====
Acq. Operator   : WRH(HPLC-09)                Seq. Line :    3
Acq. Instrument : Instrument 1                 Location  : Vial 1
Injection Date  : 4/12/2017 12:58:21 PM      Inj       :    1
                                           Inj Volume: 5.000 µl
Acq. Method    : D:\CHEM32\DATA\20170410\20170412 2017-04-12 12-27-26\10-80A(210NM)BC.M
Last changed   : 2/15/2017 5:14:04 PM by LCY(HPLC-09)
Analysis Method : D:\CHEM32\METHODS\RP-HPLC\5-80A(230NM).BC.M
Last changed   : 4/12/2017 9:03:11 AM by WRH(HPLC-09)
                 (modified after loading)
Catalog No     : CS-0578 Batch#15619
                 A-RP-199
=====
```

Additional Info : Peak(s) manually integrated



```
=====
                          Area Percent Report
=====
```

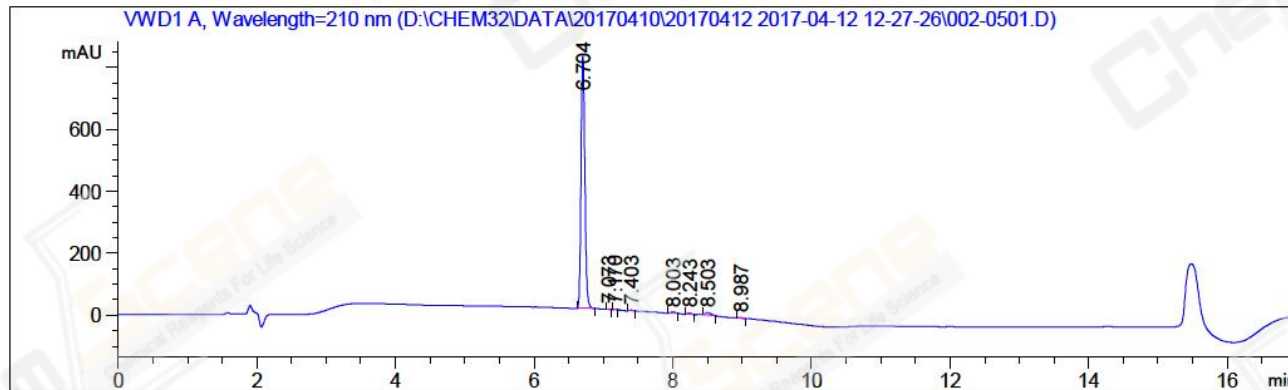
```
Sorted By           :      Signal
Multiplier:         :      1.0000
Dilution:           :      1.0000
Use Multiplier & Dilution Factor with ISTDs
```

No peaks found

```
=====
*** End of Report ***
=====
```

=====
Acq. Operator : WRH(HPLC-09) Seq. Line : 5
Acq. Instrument : Instrument 1 Location : Vial 2
Injection Date : 4/12/2017 1:35:08 PM Inj : 1
Inj Volume : 5.000 µl
Acq. Method : D:\CHEM32\DATA\20170410\20170412 2017-04-12 12-27-26\10-80A(210NM)BC.M
Last changed : 2/15/2017 5:14:04 PM by LCY(HPLC-09)
Analysis Method : D:\CHEM32\METHODS\RP-HPLC\BL55,AD.M
Last changed : 4/12/2017 1:26:42 PM by WRH(HPLC-09)
Catalog No : CS-0578 Batch#15619
A-RP-199

Additional Info : Peak(s) manually integrated



=====
Area Percent Report
=====

Sorted By : Signal
Multiplier: : 1.0000
Dilution: : 1.0000
Use Multiplier & Dilution Factor with ISTDs

Signal 1: VWD1 A, Wavelength=210 nm

Peak #	RetTime [min]	Type	Width [min]	Area [mAU*s]	Height [mAU]	Area %
1	6.704	MM	0.0630	3091.21411	817.98883	96.7160
2	7.073	MM	0.0483	5.22215	1.80283	0.1634
3	7.170	MM	0.0432	3.77082	1.45634	0.1180
4	7.403	MM	0.0543	9.23217	2.83423	0.2889
5	8.003	MM	0.0664	18.41343	4.62465	0.5761
6	8.243	MM	0.0695	18.31935	4.39622	0.5732
7	8.503	MM	0.0929	43.24729	7.76096	1.3531
8	8.987	MM	0.0727	6.75823	1.54950	0.2114

Totals : 3196.17755 842.41356

=====
*** End of Report ***