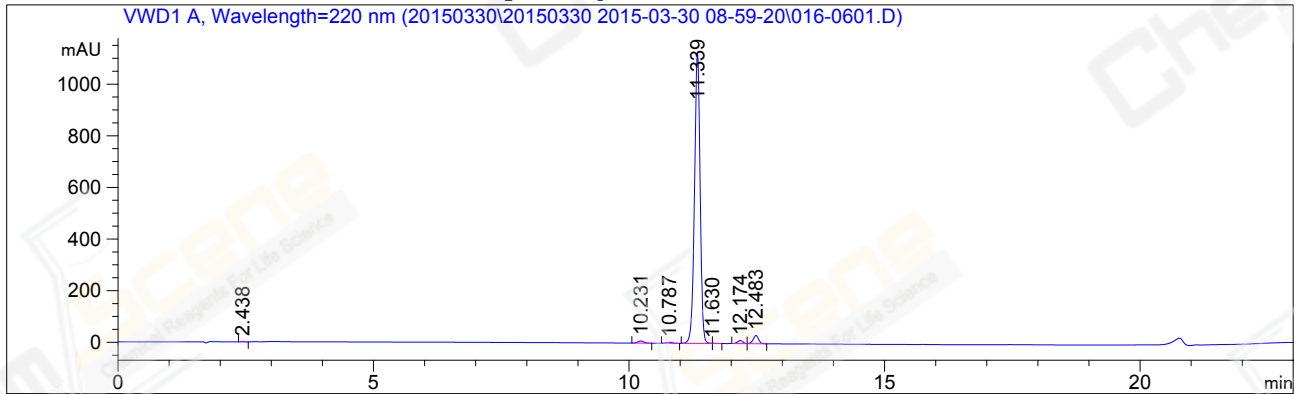


=====
Acq. Operator : CYL(HPLC-10) Seq. Line : 6
Acq. Instrument : Instrument 1 Location : Vial 16
Injection Date : 2015-03-30 11:10:09 Inj : 1
Inj Volume : 5.000 µl
Acq. Method : D:\CHEM\DATA\20150330\20150330 2015-03-30 08-59-20\HY-329_3-H01RS03.M
Last changed : 2015-03-30 10:29:03 by CYL(HPLC-10)
Analysis Method : D:\CHEM\METHODS\HY-N0005.M
Last changed : 2015-03-30 11:47:26 by CYL(HPLC-10)
(modified after loading)
Method Info : 60-95A(220)
CAS NO. : 461432-28-0
A-RP-93

Additional Info : Peak(s) manually integrated



=====
Area Percent Report
=====

Sorted By : Signal
Multiplier: : 1.0000
Dilution: : 1.0000
Use Multiplier & Dilution Factor with ISTDs

Signal 1: VWD1 A, Wavelength=220 nm

Peak #	RetTime [min]	Type	Width [min]	Area [mAU*s]	Height [mAU]	Area %
1	2.438	BB	0.0655	4.89304	1.15433	0.0542
2	10.231	BB	0.1248	68.08325	8.37942	0.7543
3	10.787	BB	0.1200	30.19058	3.91144	0.3345
4	11.339	MF	0.1272	8592.64063	1125.65771	95.1966
5	11.630	FM	0.1018	5.99019	9.80868e-1	0.0664
6	12.174	BV	0.1140	87.73991	11.90855	0.9721
7	12.483	VB	0.1148	236.66505	31.81289	2.6220

Totals : 9026.20266 1183.80521

=====
*** End of Report ***