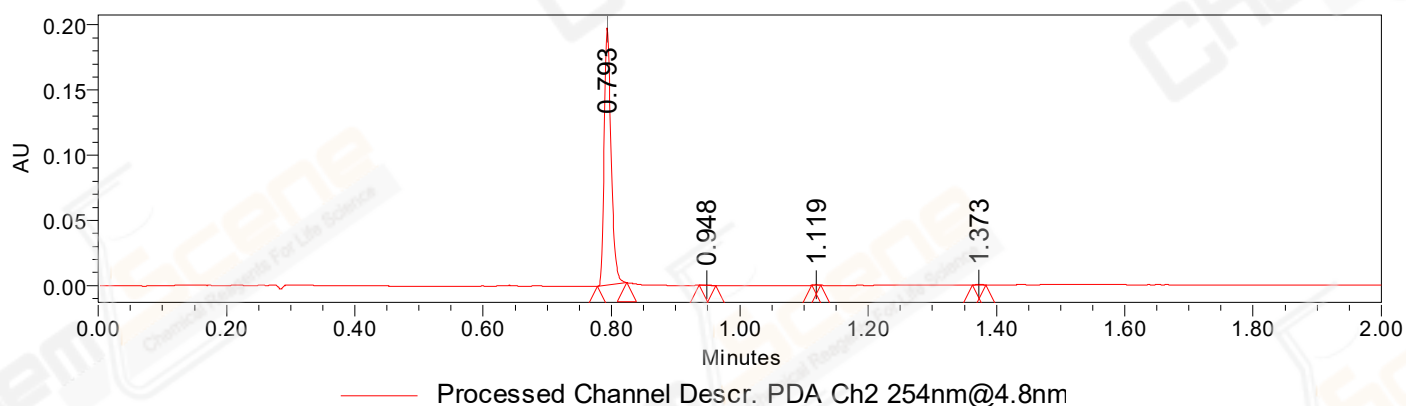


SAMPLE INFORMATION

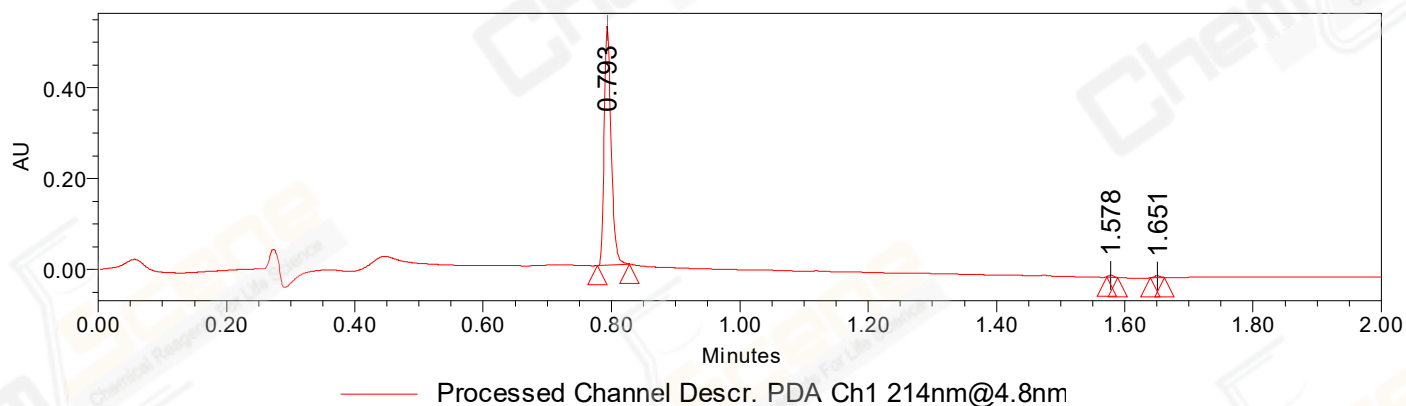
CAS NO.: 254737-29-6
Sample information: 2:C,3
Vial: 1
Injection #: 1
Injection Volume: 2.00 ul
Run Time: 2.8 Minutes
Sample Set Name: 20220707

Acquired By: LY
Date Acquired: 7/7/2022 8:54:32 AM CST
Acq. Method Set: 1_POS_2MIN
Date Processed: 7/7/2022 10:57:44 AM CST,
Processing Method: PDA_01, MS_scan
Channel Name: PDA Ch1 214nm@4.8nm, MS TIC,
Column Name: A-RP-985

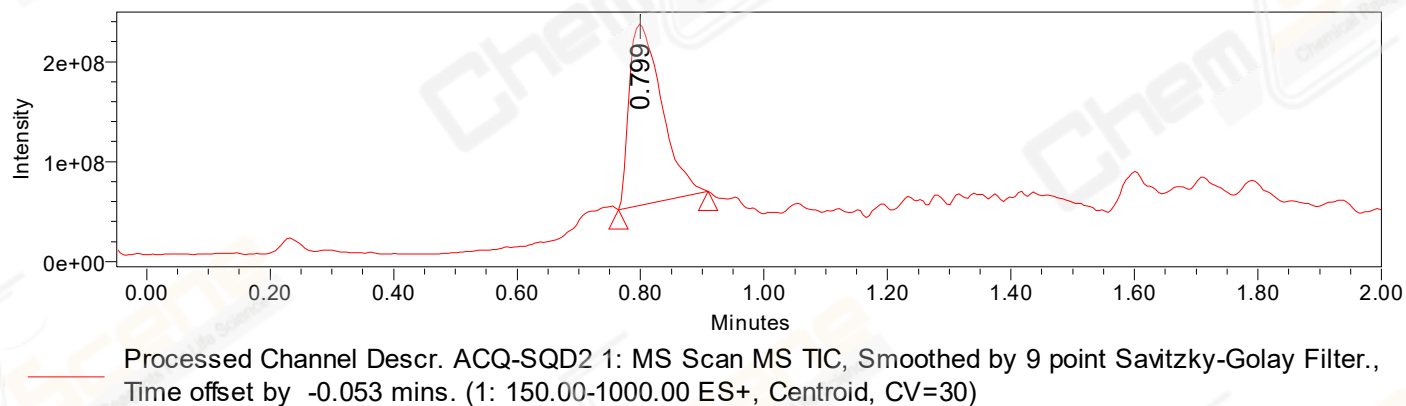
Auto-Scaled Chromatogram



Auto-Scaled Chromatogram



Auto-Scaled Chromatogram



Peak Results
Channel Name: PDA Ch2 254nm@4.8nm

	RT	Width (sec)	Area	Height	% Area	Base Peak (Combined) (m/z)	Channel Name
1	0.793	2.800	147935	197140	99.48	152.91	PDA Ch2 254nm@4.8nm
2	0.948	1.550	303	406	0.20	433.07	PDA Ch2 254nm@4.8nm
3	1.119	0.850	245	484	0.16	150.84	PDA Ch2 254nm@4.8nm
4	1.373	1.250	223	319	0.15	151.99	PDA Ch2 254nm@4.8nm

Peak Results
Channel Name: PDA Ch1 214nm@4.8nm

	RT	Width (sec)	Area	Height	% Area	Base Peak (Combined) (m/z)	Channel Name
1	0.793	3.050	396337	525626	98.73	152.91	PDA Ch1 214nm@4.8nm
2	1.578	1.050	2390	4197	0.60	152.92	PDA Ch1 214nm@4.8nm
3	1.651	1.300	2698	4265	0.67	151.90	PDA Ch1 214nm@4.8nm