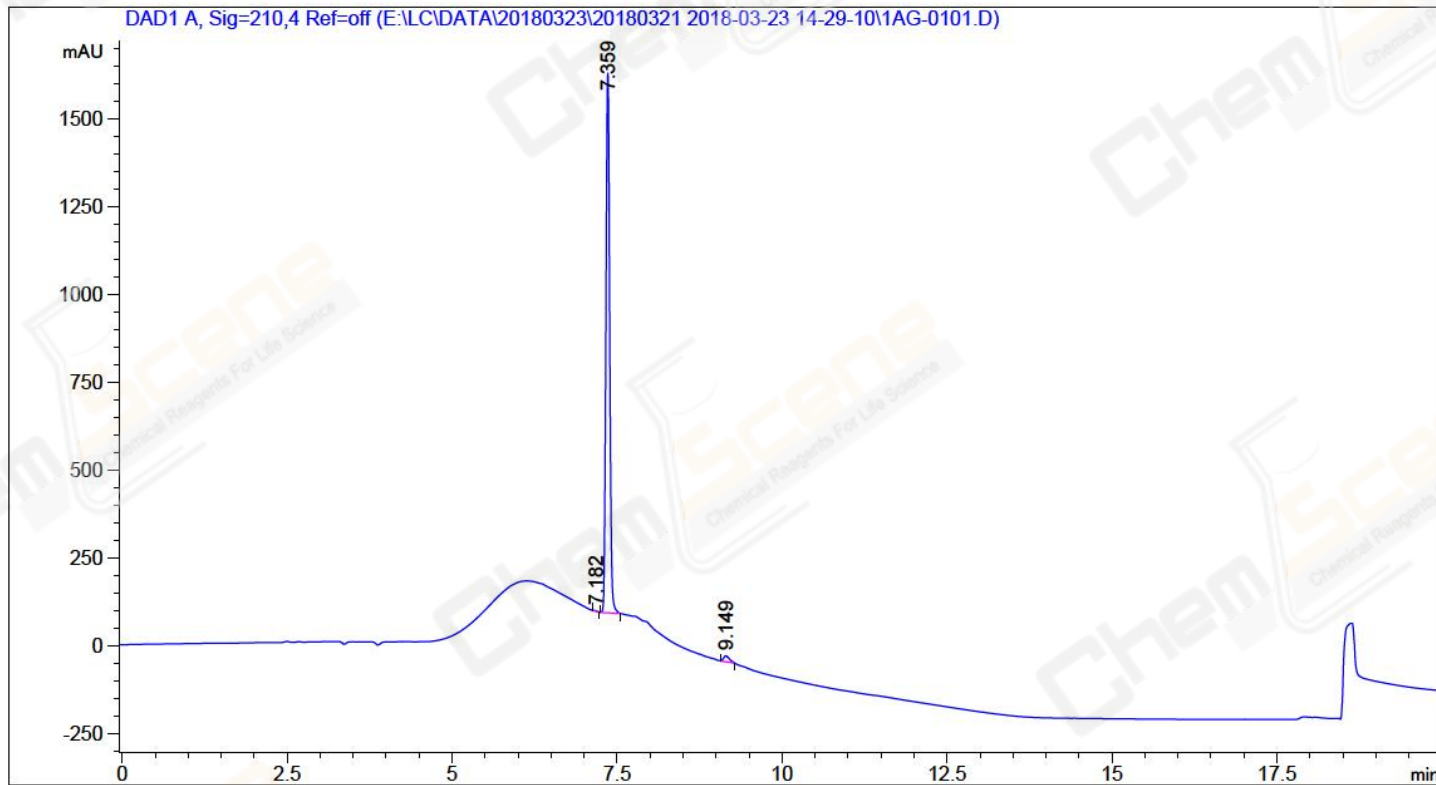


=====

Acq. Operator	: ZQQ	Seq. Line	: 1
Acq. Instrument	: LCMS-01	Location	: P1-A-07
Injection Date	: 03/23/2018 14:35:15	Inj	: 1
		Inj Volume	: 5 µl
Acq. Method	: E:\LC\DATA\20180323\20180321 2018-03-23 14-29-10\HY-17584-H01P01 (RP-HPLC) .M		
Last changed	: 03/23/2018 14:23:21 by ZQQ		
Analysis Method	: E:\LC\METHODS\HB-087_8-H01P02 (RP-HPLC) .M		
Last changed	: 03/23/2018 15:21:46 by ZQQ		
	(modified after loading)		
Catalog No	: CS-3577 Batch#17352		
	A-RP-248		



=====
Area Percent Report
=====

Sorted By : Signal
Multiplier: : 1.0000
Dilution: : 1.0000
Use Multiplier & Dilution Factor with ISTDs

Signal 1: DAD1 A, Sig=210,4 Ref=off

Peak #	RetTime [min]	Type	Width [min]	Area [mAU*s]	Height [mAU]	Area %
1	7.182	MM	0.0517	5.38663	1.73634	0.0869
2	7.359	MM	0.0654	6085.68311	1550.58777	98.1816
3	9.149	MM	0.1053	107.32309	16.99108	1.7315

Totals : 6198.39283 1569.31518

=====
*** End of Report ***