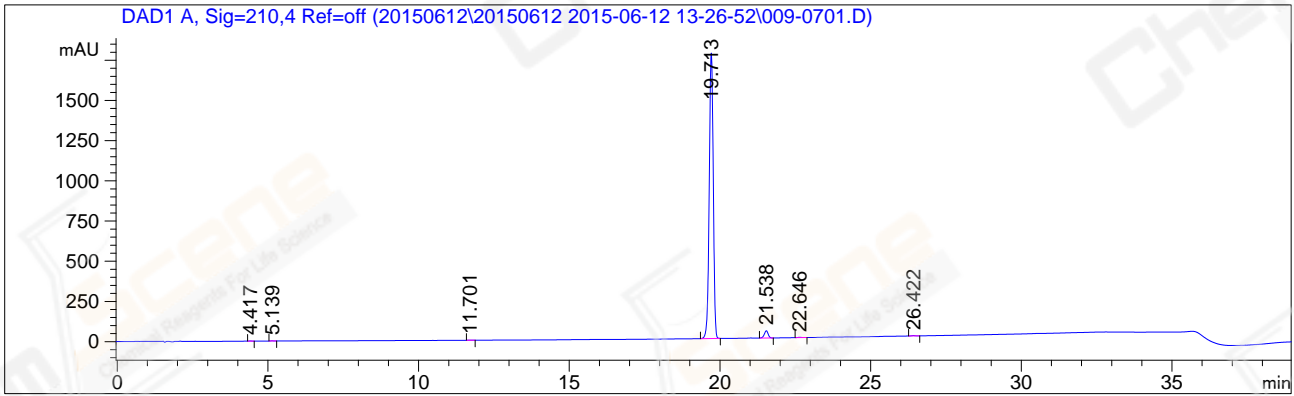


=====  
Acq. Operator : LYF(LC-01) Seq. Line : 7  
Acq. Instrument : Instrument 1 Location : Vial 9  
Injection Date : 06/12/2015 16:24:33 Inj : 1  
Inj Volume : 5 µl  
Acq. Method : E:\LC\DATA\20150612\20150612 2015-06-12 13-26-52\HM-403\_14-H01RS06 (RP-HPLC)  
.M  
Last changed : 06/12/2015 14:16:00 by WKC(LC-01)  
Analysis Method : E:\LC\METHODS\HM-403\_14-H01RS06 (RP-HPLC) .M  
Last changed : 06/12/2015 17:18:42 by WKC(LC-01)  
(modified after loading)  
Method Info : 30-90A,15MIN



=====  
Area Percent Report  
=====

Sorted By : Signal  
Multiplier: : 1.0000  
Dilution: : 1.0000  
Use Multiplier & Dilution Factor with ISTDs

Signal 1: DAD1 A, Sig=210,4 Ref=off

Peak #	RetTime [min]	Type	Width [min]	Area [mAU*s]	Height [mAU]	Area %
1	4.417	BB	0.0685	6.07754	1.40273	0.0359
2	5.139	BB	0.0861	7.11551	1.29411	0.0421
3	11.701	BB	0.0978	5.35593	8.69738e-1	0.0317
4	19.713	BB	0.1442	1.64659e4	1776.13733	97.3844
5	21.538	BB	0.1351	389.83524	44.97037	2.3056
6	22.646	BB	0.1315	14.24769	1.74138	0.0843
7	26.422	BB	0.1252	19.61207	2.40440	0.1160

Totals : 1.69082e4 1828.82005

=====  
\*\*\* End of Report \*\*\*