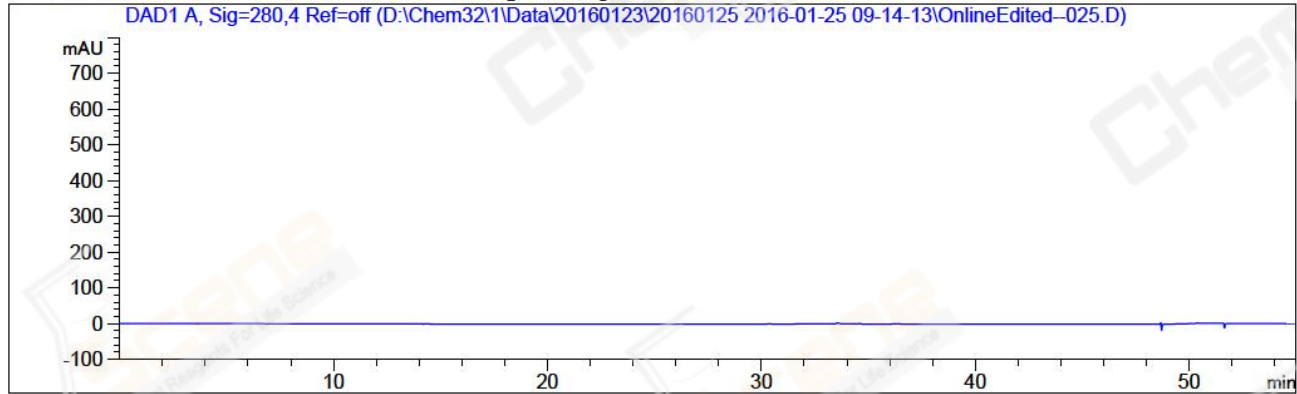


```
=====
Acq. Operator   : DHX(HPLC-14)                Seq. Line :   25
Acq. Instrument : 1260                        Location  :   21
Injection Date  : 1/25/2016 18:19:13          Inj       :    1
                                           Inj Volume: 5.000 µl
Acq. Method     : D:\Chem32\1\Data\20160123\20160125 2016-01-25 09-14-13\HY-303_20-H01RS10 (RP
                  -HPLC) .M
Last changed    : 1/25/2016 17:50:17 by DHX(HPLC-14)
Analysis Method : D:\Chem32\1\Data\20160123\20160125 2016-01-25 09-14-13\HY-303_20-H01RS10 (RP
                  -HPLC) .M (Sequence Method)
Last changed    : 1/26/2016 09:59:02 by DHX(HPLC-14)
                  (modified after loading)
Catalog No      : CS-1406 Batch#19331 A-RP-114
=====
```

Additional Info : Peak(s) manually integrated



=====
Area Percent Report
=====

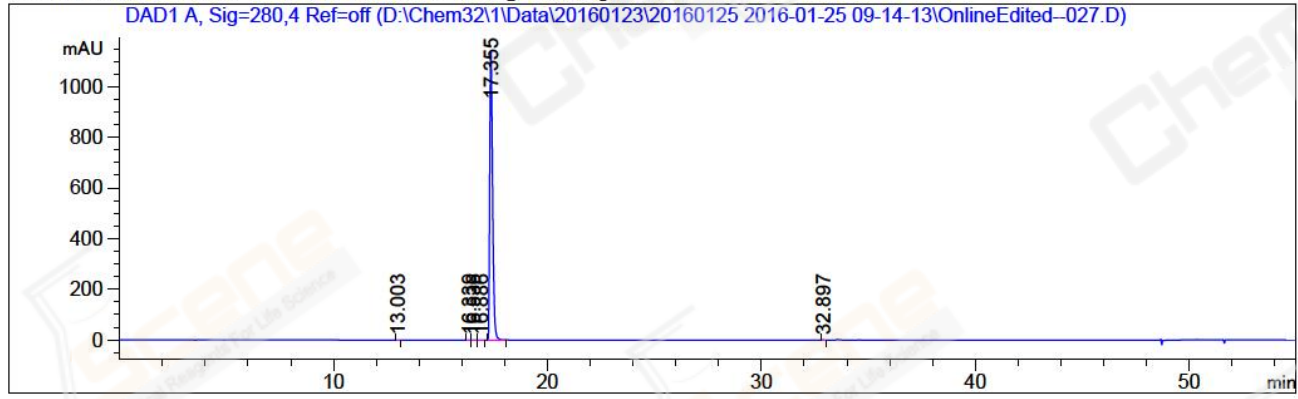
```
Sorted By      :      Signal
Multiplier     :      1.0000
Dilution       :      1.0000
Do not use Multiplier & Dilution Factor with ISTDs
```

No peaks found

=====
*** End of Report ***

=====
Acq. Operator : DHX(HPLC-14) Seq. Line : 27
Acq. Instrument : 1260 Location : 23
Injection Date : 1/25/2016 20:12:10 Inj : 1
Inj Volume : 5.000 µl
Acq. Method : D:\Chem32\1\Data\20160123\20160125 2016-01-25 09-14-13\HY-303_20-H01RS10 (RP-HPLC).M
Last changed : 1/25/2016 17:50:17 by DHX(HPLC-14)
Analysis Method : D:\Chem32\1\Data\20160123\20160125 2016-01-25 09-14-13\HY-303_20-H01RS10 (RP-HPLC).M (Sequence Method)
Last changed : 1/26/2016 09:55:24 by DHX(HPLC-14)
(modified after loading)
Catalog No : CS-1406 Batch#19331 A-RP-114

Additional Info : Peak(s) manually integrated



=====
Area Percent Report
=====

Sorted By : Signal
Multiplier : 1.0000
Dilution : 1.0000
Do not use Multiplier & Dilution Factor with ISTDs

Signal 1: DAD1 A, Sig=280,4 Ref=off

Peak #	RetTime [min]	Type	Width [min]	Area [mAU*s]	Height [mAU]	Area %
1	13.003	MM	0.1184	1.16173	1.63491e-1	0.0110
2	16.339	MF	0.1173	1.65117	2.34650e-1	0.0156
3	16.536	FM	0.1527	8.59950e-1	9.38741e-2	8.150e-3
4	16.886	MM	0.1400	1.35089	1.60782e-1	0.0128
5	17.355	MM	0.1544	1.05430e4	1138.09570	99.9176
6	32.897	MM	0.0782	3.66576	7.81186e-1	0.0347

Totals : 1.05517e4 1139.52969

=====
*** End of Report ***