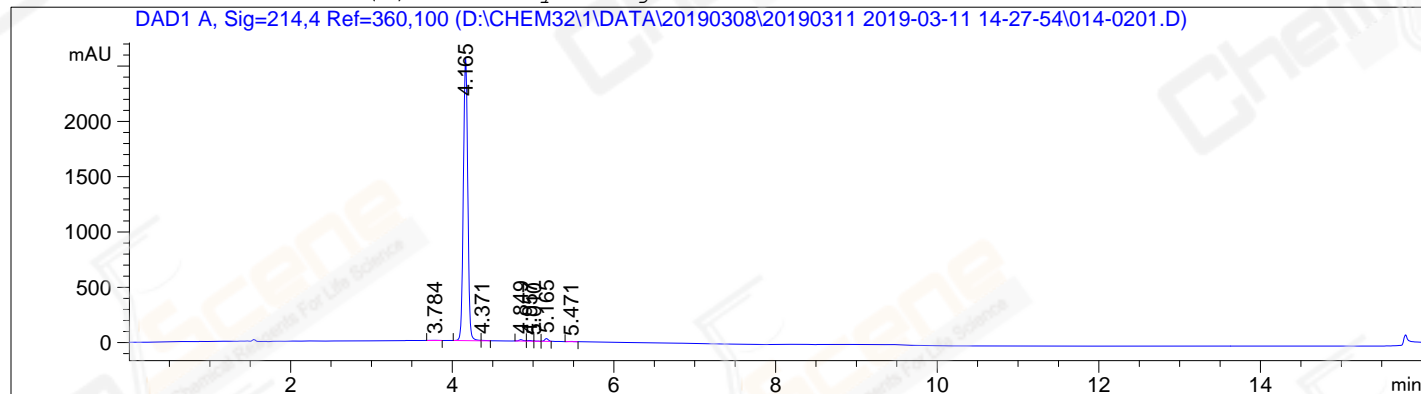


```

=====
Acq. Operator   : ZQQ                               Seq. Line :    2
Acq. Instrument : HPLC-12                           Location  : Vial 14
Injection Date  : 3/11/2019 14:45:20                Inj       :    1
                                                    Inj Volume: 5.0 µl
Acq. Method     : D:\CHEM32\1\DATA\20190308\20190311 2019-03-11 14-27-54\10-90A 214NM.M
Last changed    : 2/25/2019 15:54:57 by ZQQ
Analysis Method : D:\CHEM32\1\METHOD\10-90A 214NM.M
Last changed    : 3/12/2019 13:03:50 by ZQQ
                  (modified after loading)
Catalog No     : CS-3285 Batch# 20020
                  A-RP-328
=====
  
```

Additional Info : Peak(s) manually integrated



Area Percent Report

```

=====
Sorted By      :      Signal
Multiplier:    :      1.0000
Dilution:      :      1.0000
Use Multiplier & Dilution Factor with ISTDs
=====
  
```

Signal 1: DAD1 A, Sig=214,4 Ref=360,100

Peak #	RetTime [min]	Type	Width [min]	Area [mAU*s]	Height [mAU]	Area %
1	3.784	MM	0.0812	8.70807	1.78673	0.0880
2	4.165	MF	0.0629	9698.66895	2570.57764	97.9931
3	4.371	MF	0.0682	15.58049	3.80586	0.1574
4	4.849	BV	0.0556	48.17281	12.88647	0.4867
5	4.957	MF	0.0651	24.97424	6.39672	0.2523
6	5.010	FM	0.0626	8.26991	2.20124	0.0836
7	5.165	MF	0.0538	82.89539	25.68771	0.8376
8	5.471	MM	0.0704	10.02938	2.37509	0.1013

Totals : 9897.29922 2625.71745

*** End of Report ***