

Sample Name: BIZ2016-801-WJ6\_0

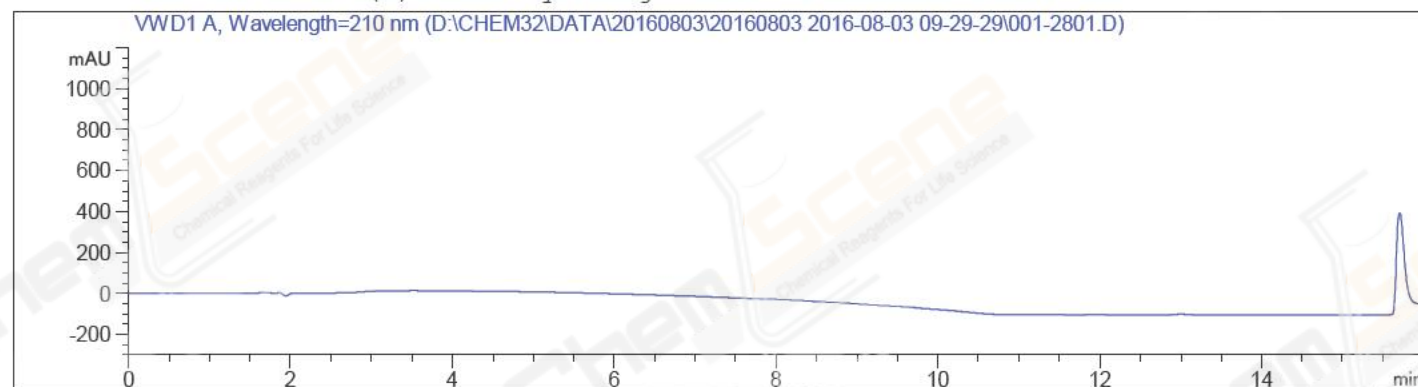
```
=====
Acq. Operator   : LCY(HPLC-09)                Seq. Line :   28
Acq. Instrument : Instrument 1                 Location  : Vial 1
Injection Date  : 8/3/2016 4:44:18 PM         Inj       :    1
                                                Inj Volume: 5.000 µl

Acq. Method     : D:\CHEM32\DATA\20160803\20160803 2016-08-03 09-29-29\30-90A,210NM.M
Last changed    : 8/3/2016 4:45:13 PM by LCY(HPLC-09)
                  (modified after loading)

Analysis Method : D:\CHEM32\DATA\20160803\20160803 2016-08-03 09-29-29\30-90A,210NM.M (Sequence
Method)
Last changed    : 8/4/2016 8:55:30 AM by LCY(HPLC-09)
                  (modified after loading)

Catalog No     : CS-4256 Batch#21303
                  A-RP-93
=====
```

Additional Info : Peak(s) manually integrated



```
=====
                          Area Percent Report
=====
```

```
Sorted By      :      Signal
Multiplier:    :      1.0000
Dilution:      :      1.0000
Use Multiplier & Dilution Factor with ISTDs
```

No peaks found

```
=====
*** End of Report ***
=====
```

Sample Name: BIZ2016-801-WJ6

```

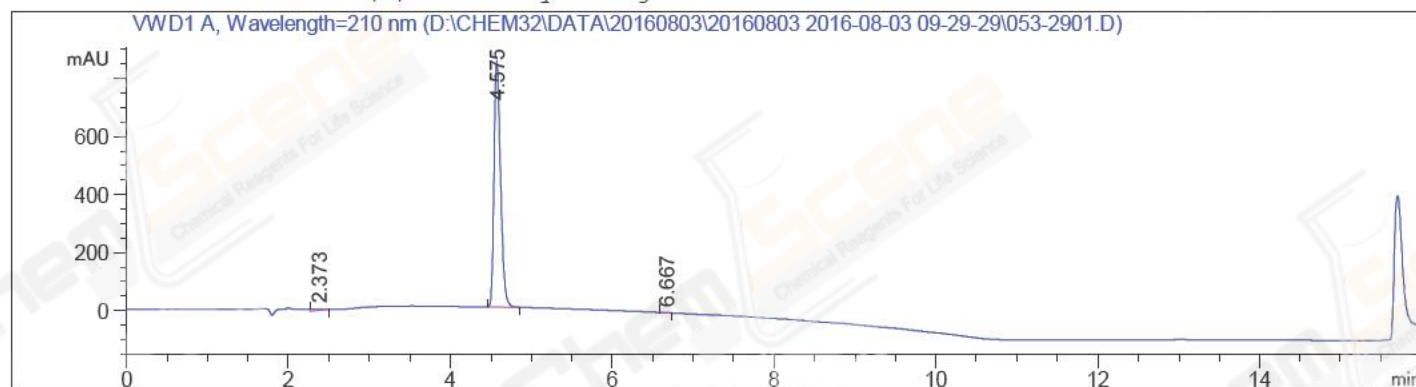
=====
Acq. Operator   : LCY(HPLC-09)                      Seq. Line :   29
Acq. Instrument : Instrument 1                      Location  : Vial 53
Injection Date  : 8/3/2016 5:02:15 PM              Inj       :    1
                                                    Inj Volume: 5.000 µl

Acq. Method     : D:\CHEM32\DATA\20160803\20160803 2016-08-03 09-29-29\30-90A,210NM.M
Last changed    : 8/3/2016 4:45:13 PM by LCY(HPLC-09)
                  (modified after loading)

Analysis Method  : D:\CHEM32\DATA\20160803\20160803 2016-08-03 09-29-29\30-90A,210NM.M (Sequence
                  Method)
Last changed    : 8/4/2016 8:56:18 AM by LCY(HPLC-09)
                  (modified after loading)

Catalog No     : CS-4256 Batch#21303
                  A-RP-93
    
```

Additional Info : Peak(s) manually integrated



Area Percent Report

```

Sorted By      :      Signal
Multiplier:    :      1.0000
Dilution:      :      1.0000
Use Multiplier & Dilution Factor with ISTDs
    
```

Signal 1: VWD1 A, Wavelength=210 nm

Peak #	RetTime [min]	Type	Width [min]	Area [mAU*s]	Height [mAU]	Area %
1	2.373	VB	0.1429	47.29584	4.38116	0.9838
2	4.575	MM	0.0936	4756.05273	846.54285	98.9302
3	6.667	MM	0.0765	4.13577	9.00660e-1	0.0860

Totals : 4807.48434 851.82467

\*\*\* End of Report \*\*\*