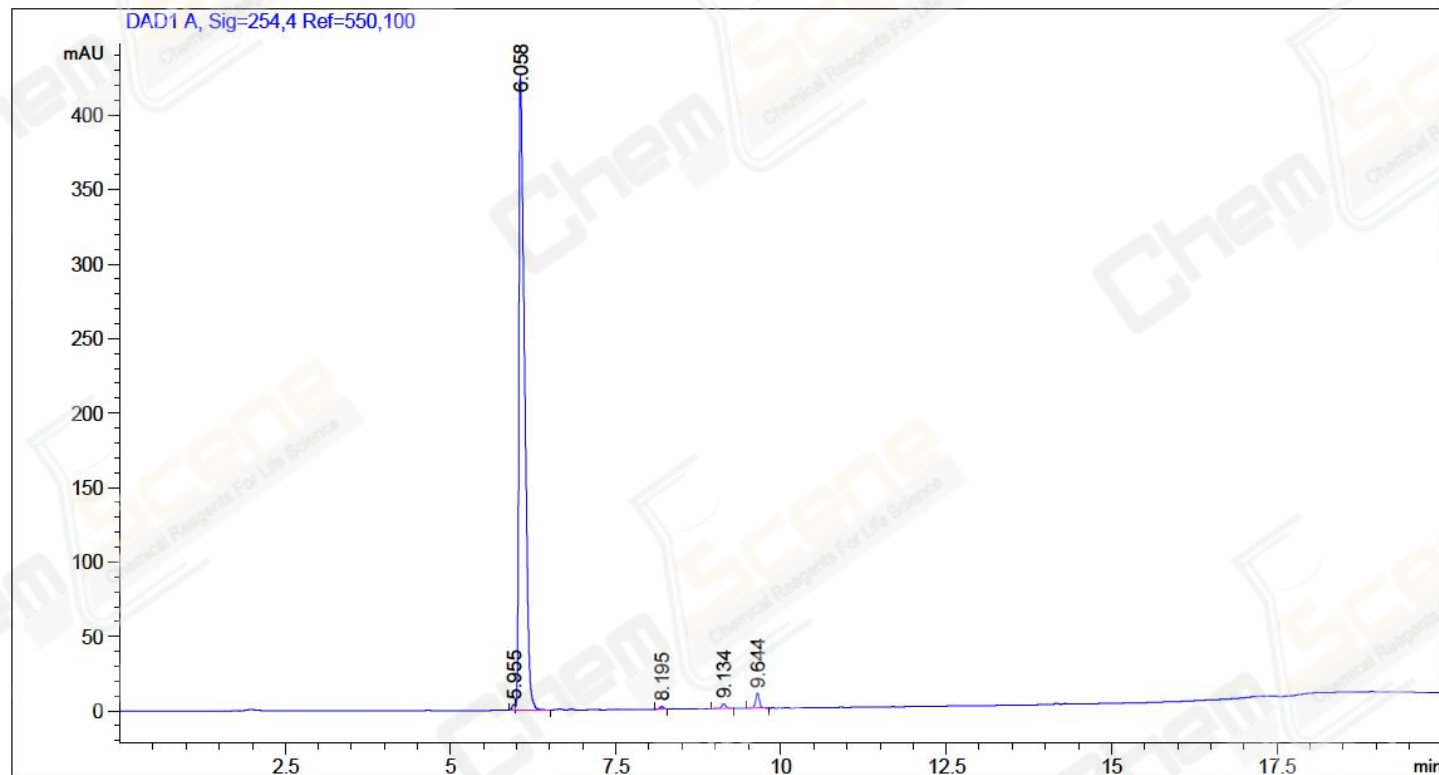


Acq. Operator : SYSTEM
Acq. Instrument : 12601c

Seq. Line : 2
Location : Vial 8

Catalog No : CS-5771 Batch#21429

Inj Volume : 2.000 µl



Area Percent Report

Sorted By : Signal
Multiplier : 1.0000
Dilution : 1.0000
Use Multiplier & Dilution Factor with ISTDs

Signal 1: DAD1 A, Sig=254,4 Ref=550,100

Peak #	RetTime [min]	Type	Width [min]	Area [mAU*s]	Height [mAU]	Area %
1	5.955	BV	0.0494	12.68157	3.89932	0.4823
2	6.058	VB	0.0909	2555.42505	426.48138	97.1806
3	8.195	BB	0.0660	6.87399	1.65508	0.2614
4	9.134	BB	0.0722	15.03077	3.12044	0.5716
5	9.644	BB	0.0595	39.55050	10.14064	1.5041

Totals : 2629.56188 445.29687