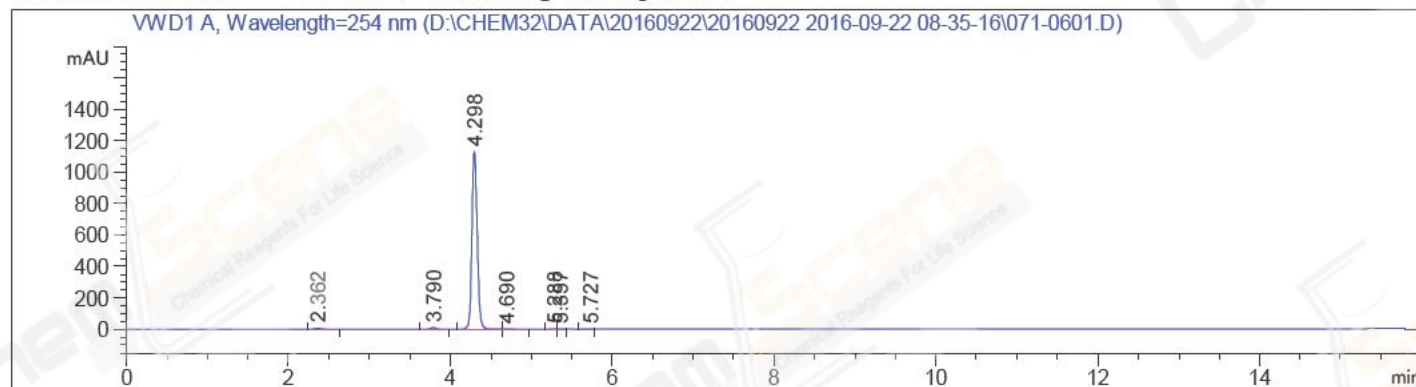


=====  
Acq. Operator : LCY(HPLC-09) Seq. Line : 6  
Acq. Instrument : Instrument 1 Location : Vial 71  
Injection Date : 9/22/2016 9:55:19 AM Inj : 1  
Inj Volume : 5.000 µl  
Acq. Method : D:\CHEM32\DATA\20160922\20160922 2016-09-22 08-35-16\5-50A(254NM).M  
Last changed : 9/22/2016 9:54:04 AM by LCY(HPLC-09)  
(modified after loading)  
Analysis Method : D:\CHEM32\METHODS\RP-HPLC\10-80A(210NM).M  
Last changed : 7/12/2016 1:37:48 PM by CWQ(HPLC-09)  
Catalog No : CS-0878 Batch#21796  
A-RP-93

Additional Info : Peak(s) manually integrated



=====  
Area Percent Report  
=====

Sorted By : Signal  
Multiplier: : 1.0000  
Dilution: : 1.0000  
Use Multiplier & Dilution Factor with ISTDs

Signal 1: VWD1 A, Wavelength=254 nm

Peak #	RetTime [min]	Type	Width [min]	Area [mAU*s]	Height [mAU]	Area %
1	2.362	MM	0.0814	38.61019	7.90666	0.7368
2	3.790	MM	0.0722	48.00714	11.08319	0.9161
3	4.298	MF	0.0758	5136.29248	1129.10229	98.0130
4	4.690	FM	0.1218	5.73213	7.84600e-1	0.1094
5	5.288	MF	0.0787	3.02456	6.40805e-1	0.0577
6	5.357	MF	0.0857	3.15436	6.13292e-1	0.0602
7	5.727	MF	0.1297	5.59881	7.19354e-1	0.1068

Totals : 5240.41968 1150.85020

=====  
\*\*\* End of Report \*\*\*