

Acq. operator: HU GANG (HG_619) Acq. Instrument: HPLC-11 (Offline)

Sample ID: BIZ2016-N30-ZYL1_0

Location: 9 Inj Volume: 10uL

Datefile: D:\Agilent\properties\Result\DATE\20161202\HPLC-11.35 2016-12-02 09-51-43
(GMT +08-00).rslt\BIZ2016-N30-ZYL1_0.dat

Method: D:\Agilent\properties\Method\HY-308_19-H01P08 (RP-HPLC), AC. C2.met

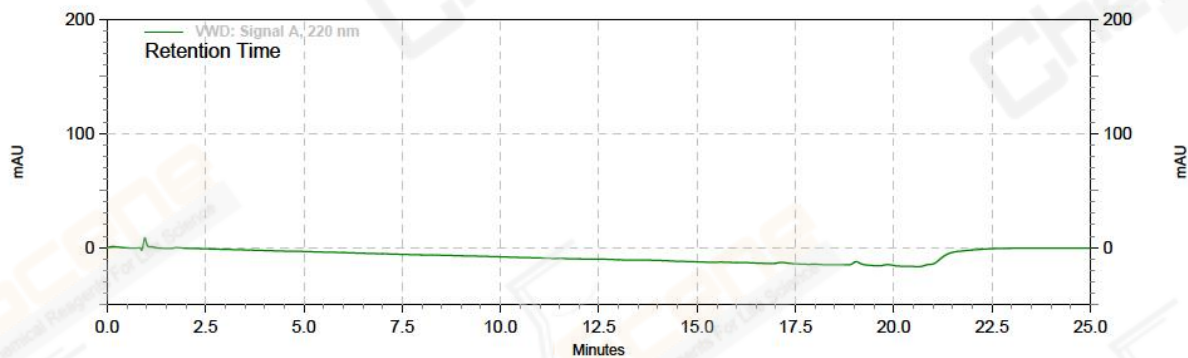
Acq. Method: D:\Agilent\properties\Method\HY-15258-H01P07 (RP-HPLC), CD. C1.met

Acquire time: 12/2/2016 16:06:37 (GMT +08:00)

Print time: 12/2/2016 17:19:49 (GMT +08:00)

Catalog No: CS-1389 Batch#22685

A-RP-185



WVD: Signal A,

220 nm Results

Retention Time

Area

Height

Area Percent

Width

Acq. operator: HU GANG (HG_619) Acq. Instrument: HPLC-11 (Offline)

Sample ID: BIZ2016-N30-ZYL1

Location: 10

Inj Volume: 10uL

Datefile: D:\Agilent\properties\Result\DATE\20161202\HPLC-11.35 2016-12-02 09-51-43
(GMT +08-00).rslt\BIZ2016-N30-ZYL1.dat

Method: D:\Agilent\properties\Method\HY-308_19-H01P08 (RP-HPLC), AC. C2.met

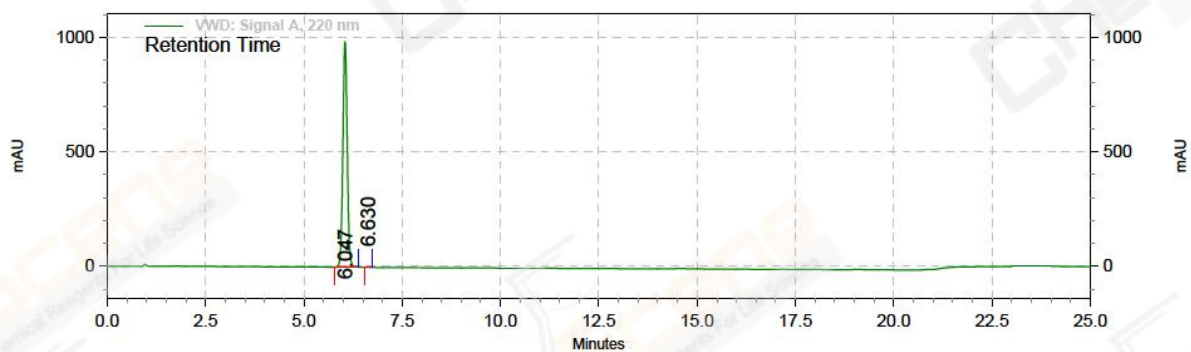
Acq. Method: D:\Agilent\properties\Method\HY-15258-H01P07 (RP-HPLC), CD. C1.met

Acquire time: 12/2/2016 16:33:08 (GMT +08:00)

Print time: 12/2/2016 17:18:47 (GMT +08:00)

Catalog No: CS-1389 Batch#22685

A-RP-185



VWD: Signal A,

220 nm Results

Retention Time	Area	Height	Area Percent	Width
6.047	126227021	16499304	99.891	0.60
6.630	137488	20660	0.109	0.22

Totals	Area	Height	Area Percent	Width
	126364509	16519964	100.000	