

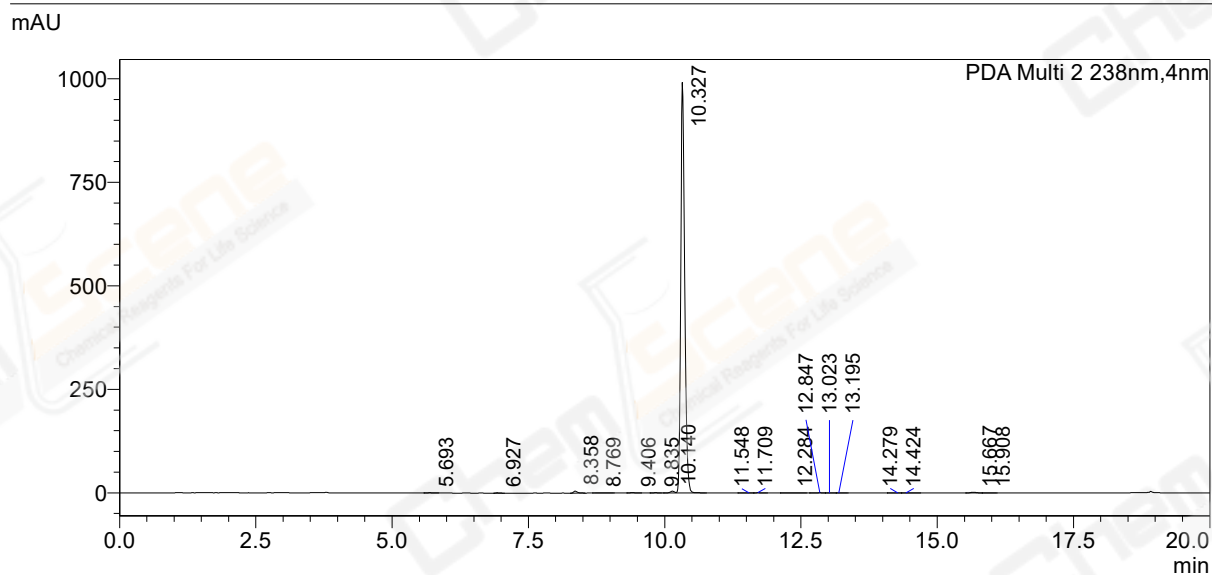
# Analysis Report

## <Sample Information>

Sample Name : ZDX14222-57-1  
Method Filename : ZDX14222.lcm  
Vial # : 1-20  
Injection Volume : 10 uL  
Date Acquired : 09/23/22 09:48:51 AM  
CAS NO. : 2079895-62-6

Instrument : daojin004  
Acquired by : System Administrator

## <Chromatogram>



## <Peak Table>

PDA Ch2 238nm					
Peak#	Ret. Time	Area	Height	Height%	Area%
1	5.693	3807	847	0.084	0.073
2	6.927	3900	872	0.086	0.075
3	8.358	22481	4895	0.485	0.434
4	8.769	1985	138	0.014	0.038
5	9.406	5698	979	0.097	0.110
6	9.835	2857	655	0.065	0.055
7	10.140	23714	4285	0.424	0.458
8	10.327	5079694	991815	98.215	98.018
9	11.548	2225	353	0.035	0.043
10	11.709	4451	798	0.079	0.086
11	12.284	4550	515	0.051	0.088
12	12.847	3912	558	0.055	0.075
13	13.023	3490	473	0.047	0.067
14	13.195	906	127	0.013	0.017
15	14.279	1933	257	0.025	0.037
16	14.424	3583	385	0.038	0.069
17	15.667	12076	1699	0.168	0.233
18	15.908	1123	189	0.019	0.022
Total		5182385	1009839	100.000	100.000