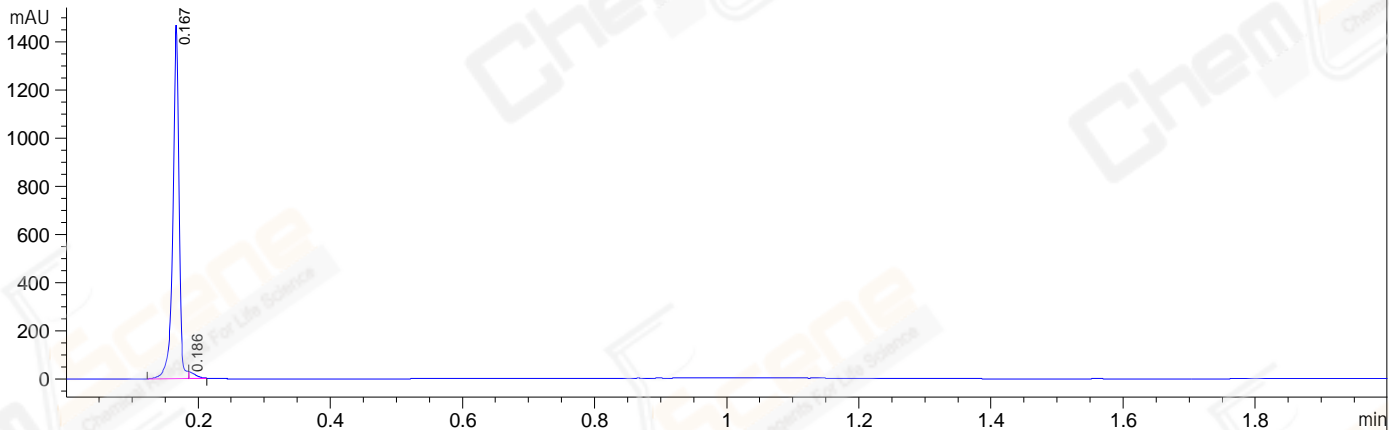
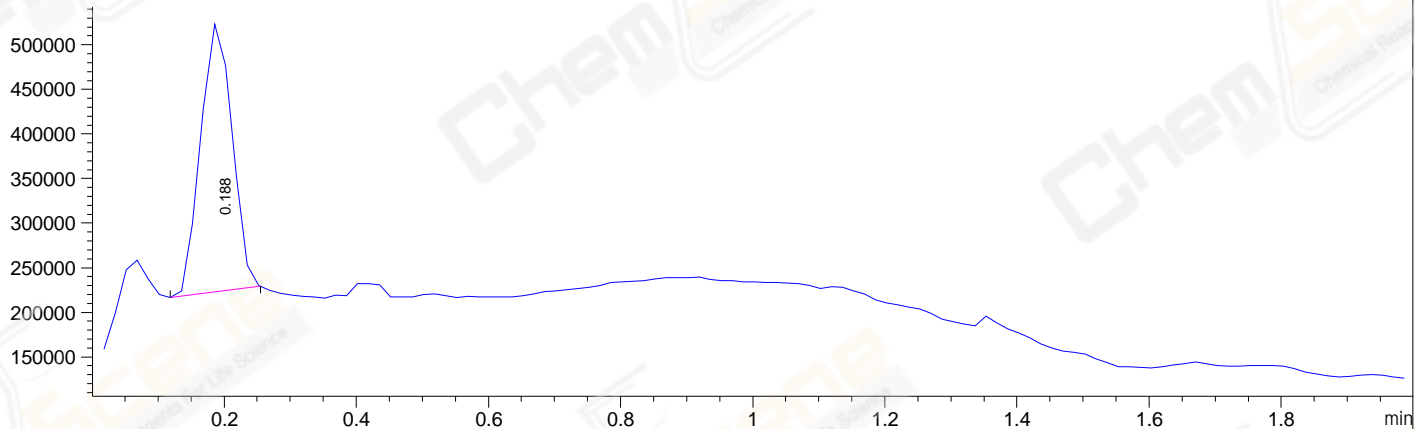


Injection Date : 20-Jun-23, 11:06:44 Tgt Mass(EZX) :
 Sample Name : CPK2023-619-27781 Location : P1-A-09
 Acq. Operator : LY_2278 Inj : 1
 Spec. Reported : MS Integration Inj Volume : 1 ul
 Acq. Method : E:\ChemStation\1\Methods\1-POS-2MIN(1.5ML)-(0-500).M
 Analysis Method : E:\CHEMSTATION\1\METHODS\1-POS-2MIN(1.5ML)-(0-500).M
 CAS NO. : 2353-33-5 WalkUp method: '1-POS-2MIN(0-500)' Project: CPK2023
 Method Info : Mobile Phase: A: water(0.01%FA) B:ACN(0.01%FA)
 Flow Rate :1.5ml/min
 Column :Shim-pack Scepter C18-120, 3.0*33mm,3um
 Oven Temperature : 45C

DAD1 A, Sig=214,4 Ref=off



MSD1 TIC, MS File ES-API, Pos, Scan, Frag: 70



Integration Results for DAD1 A, Sig=214,4 Ref=off

RetTim	Width	Area	Height	Area%
0.17	0.01	956.15	1472.85	98.10
0.19	0.01	18.50	28.49	1.90