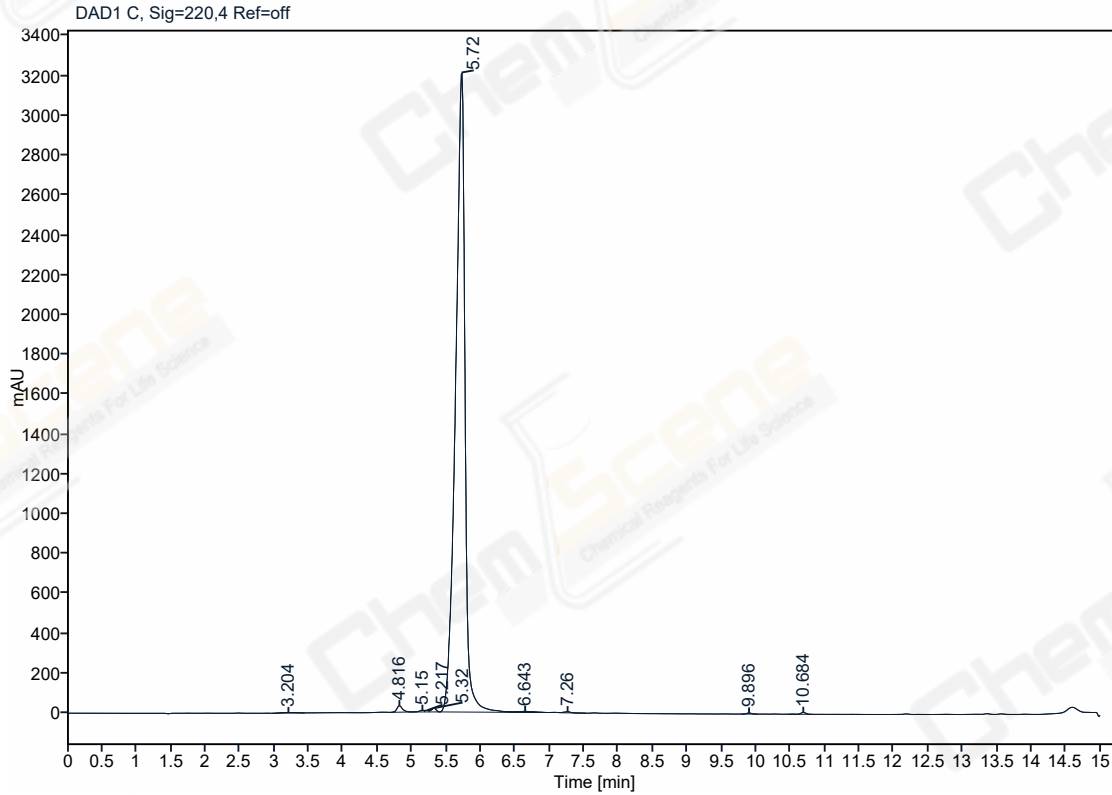


# Analysis Report

CAS NO.: 3131-52-0  
Acq. method : 20-90(15min).M  
Location : P1-B5  
Injection date: 2023-07-04 15:34:38+08:00  
Injection volume: 15.000  
Acq. operator : 1260



Signal: DAD1 C, Sig=220,4 Ref=off

No.	RT [min]	Height	Height %	Area	Area%
1	3.204	2.86	0.086	44.90	0.144
2	4.816	32.41	0.980	185.11	0.595
3	5.150	8.05	0.243	38.26	0.123
4	5.217	7.93	0.240	32.38	0.104
5	5.320	18.77	0.567	89.43	0.287
6	5.720	3212.01	97.126	30535.56	98.111
7	6.643	4.77	0.144	82.16	0.264
8	7.260	5.70	0.172	39.96	0.128
9	9.896	5.13	0.155	27.02	0.087
10	10.684	9.41	0.285	48.61	0.156
	Sum	3307.0438	100.00	31123.3850	100.0000