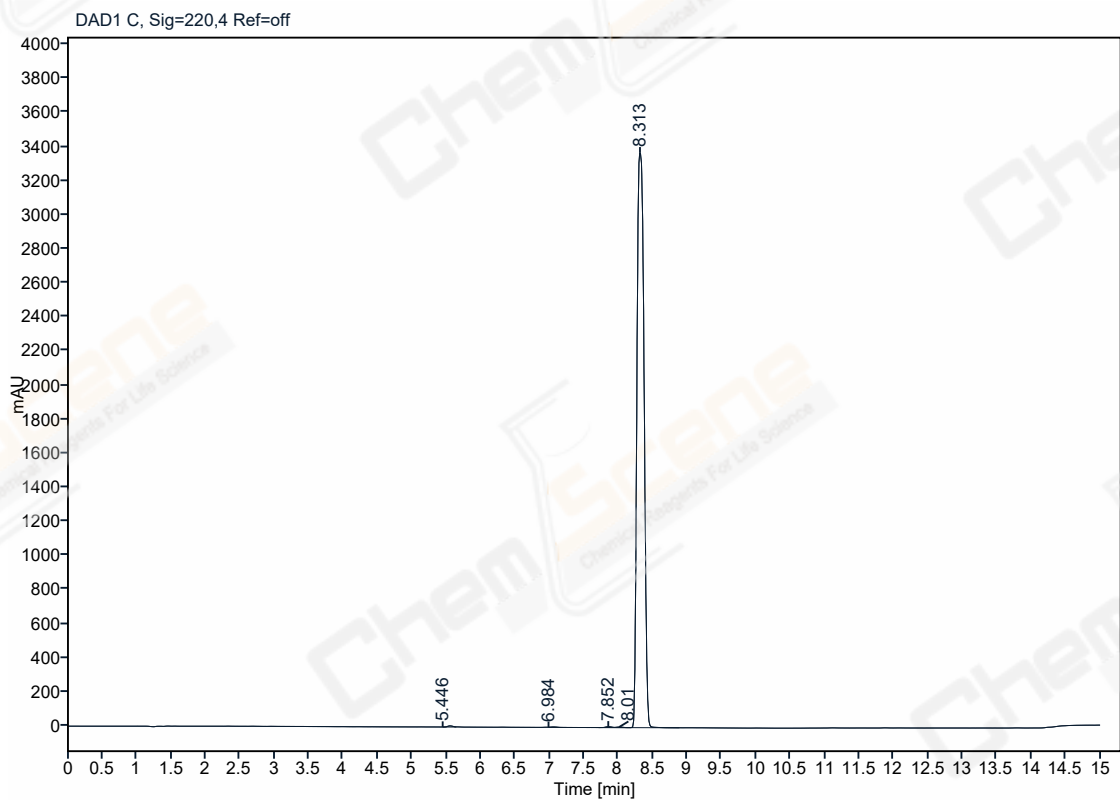


# Analysis Report

**CAS NO.:** 2094547-67-6  
**Acq. method :** 30-95(15min).M  
**Location :** P1-F1  
**Injection date:** 2023-08-11 14:58:25+08:00

**Injection volume:** 3.000  
**Acq. operator :** 1260



**Signal:** DAD1 C, Sig=220,4 Ref=off

No.	RT [min]	Height	Height %	Area	Area%
1	5.446	0.00	0.000	36.59	0.152
2	6.984	1.02	0.030	17.10	0.071
3	7.852	4.89	0.145	29.91	0.124
4	8.010	3.14	0.093	21.17	0.088
5	8.313	3375.03	99.733	23988.73	99.565
	Sum	3384.0773	100.00	24093.5061	100.0000