

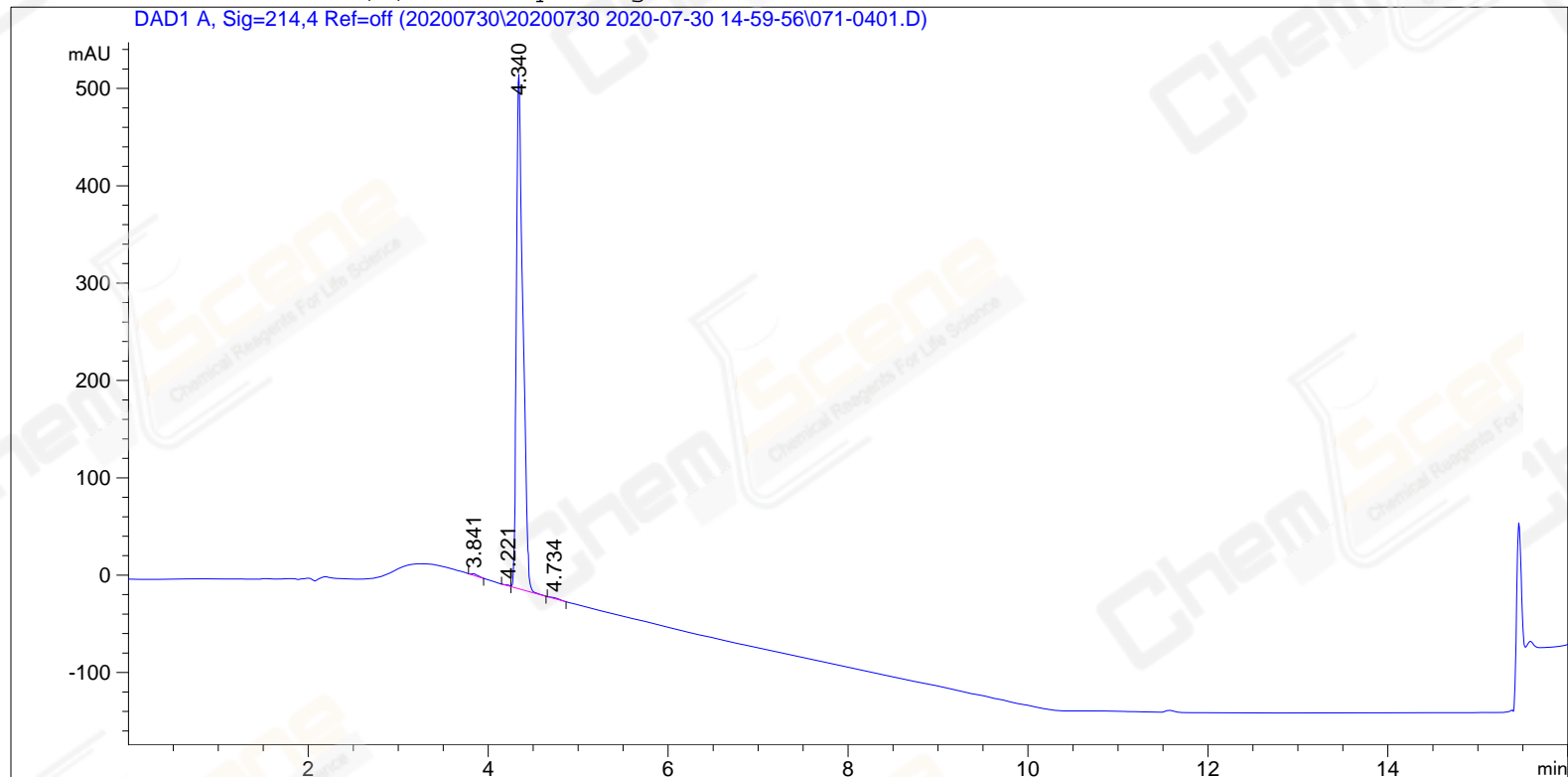
=====

Acq. Operator : zqq_793	Seq. Line : 4
Acq. Instrument : HPLC-12	Location : 71
Injection Date : 7/30/2020 15:54:29	Inj : 1
	Inj Volume : 5.000 µl

Different Inj Volume from Sample Entry! Actual Inj Volume : 2.000 µl

Acq. Method : D:\Chem32\1\Data\20200730\20200730 2020-07-30 14-59-56\10-90A 214NM.M
Last changed : 7/30/2020 14:59:56 by zqq_793
Analysis Method : D:\Chem32\1\Data\20200730\20200730 2020-07-30 14-59-56\10-90A 214NM.M (Sequence Method)
Last changed : 7/30/2020 16:14:03 by zqq_793 (modified after loading)
Sample Info : HM-538_14-20180115 A-RP-536

Additional Info : Peak(s) manually integrated



=====
Area Percent Report
=====

Sorted By : Signal
Multiplier : 1.0000
Dilution : 1.0000
Use Multiplier & Dilution Factor with ISTDs

Signal 1: DAD1 A, Sig=214,4 Ref=off

Peak #	RetTime [min]	Type	Width [min]	Area [mAU*s]	Height [mAU]	Area %
1	3.841	MM	0.0850	9.04270	1.77332	0.3380
2	4.221	MF	0.0647	3.32870	9.22281e-1	0.1244
3	4.340	FM	0.0835	2657.70459	530.37366	99.3262
4	4.734	MM	0.1001	5.65711	9.41807e-1	0.2114

Totals : 2675.73311 534.01106

=====
*** End of Report ***