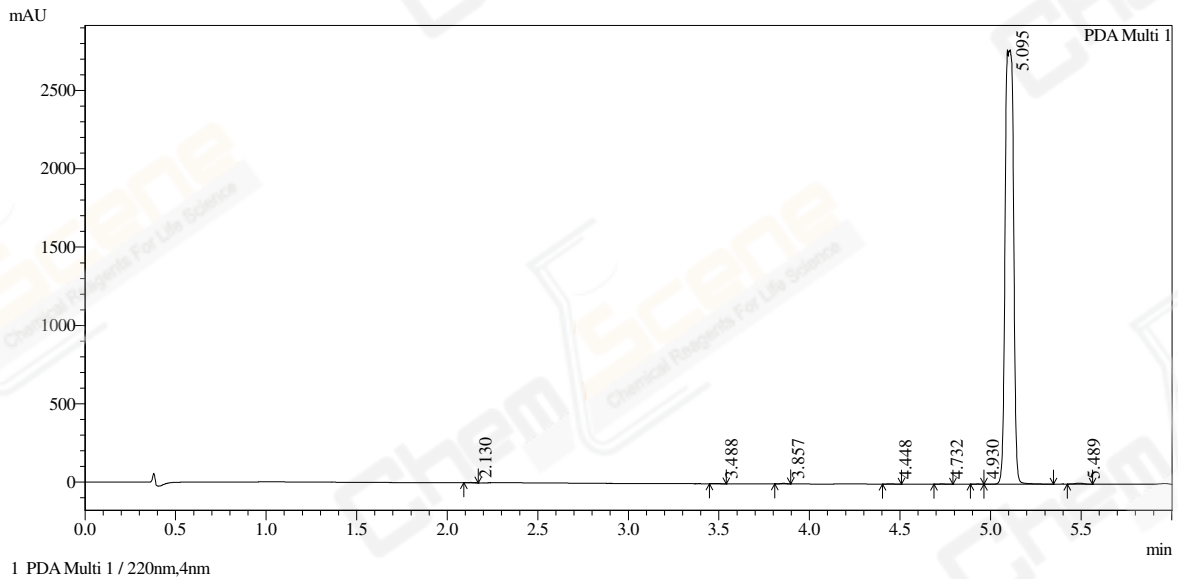


HPLC REPORT

CAS NO. : 476436-68-7
Sample ID : WX00137-230822-p1b
Vial# : 48
Injection Volume : 10
Filename : D:\DATA\2023\2308\230822\WX00137-230822-p1b.lcd
Method Name : D:\method\0-60AB_6min.lcm
Instrument : HPLC-BM
Run time : 2023-08-22 09:59:04



1 PDA Multi 1 / 220nm,4nm

Integration result

PeakTable							
Peak#	Ret. Time	USP Width	Resolution	Height	Area	Area %	
1	2.130	0.050	0.000	1827	3481	0.039	
2	3.488	0.055	25.800	2046	4366	0.049	
3	3.857	0.055	6.714	3767	7562	0.084	
4	4.448	0.068	9.672	2061	5143	0.057	
5	4.732	0.052	4.723	2141	4499	0.050	
6	4.930	0.059	3.577	1219	2799	0.031	
7	5.095	0.071	2.549	2764571	8945638	99.478	
8	5.489	0.083	5.112	6137	19089	0.212	
Total				2783770	8992577	100.000	