

```
=====
Acq. Operator   : ZQQ                               Seq. Line :    1
Acq. Instrument : HPLC-12                           Location  : Vial 28
Injection Date  : 2018-05-23 04:40:10 下午          Inj       :    1
                                                    Inj Volume: 5.0 µl
Acq. Method     : D:\CHEM32\2\DATA\20180523\20180523 2018-05-23 16-33-50\5-50A.M
Last changed    : 2018-05-23 04:05:23 下午 by ZQQ
Analysis Method : C:\CHEM32\2\METHODS\5-50A.M
Last changed    : 2018-05-23 05:37:44 下午 by ZQQ
                  (modified after loading)
Catalog No     : CS-0878 Batch#30469
                  A-RP-243
=====
```

Additional Info : Peak(s) manually integrated



```
=====
                          Area Percent Report
=====
```

```
Sorted By           :      Signal
Multiplier:         :      1.0000
Dilution:           :      1.0000
Use Multiplier & Dilution Factor with ISTDs
```

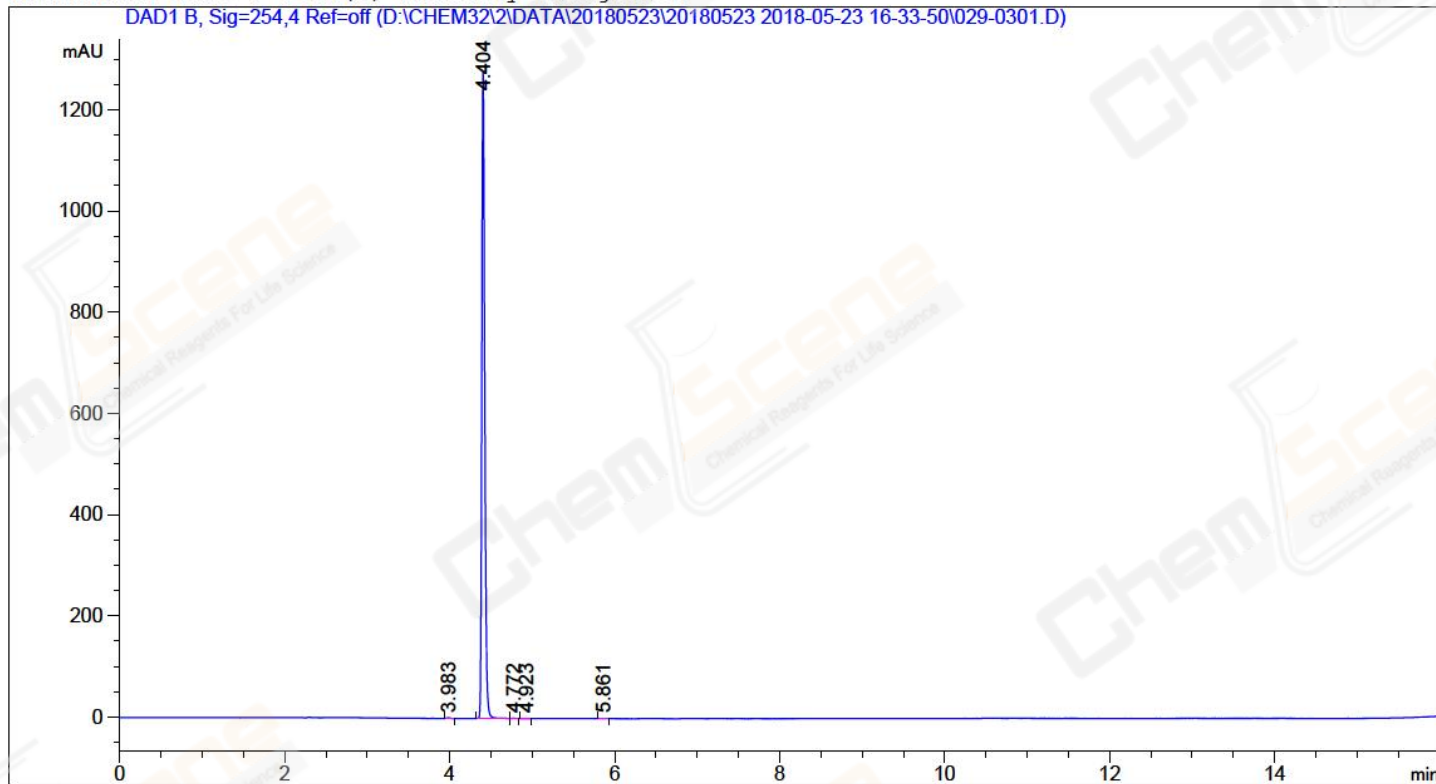
No peaks found

```
=====
*** End of Report ***
=====
```

=====

Acq. Operator : ZQQ	Seq. Line : 3
Acq. Instrument : HPLC-12	Location : Vial 29
Injection Date : 2018-05-23 05:16:15 下午	Inj : 1
	Inj Volume : 5.0 µl
Different Inj Volume from Sequence !	Actual Inj Volume : 1.0 µl
Acq. Method : D:\CHEM32\2\DATA\20180523\20180523 2018-05-23 16-33-50\5-50A.M	
Last changed : 2018-05-23 04:05:23 下午 by ZQQ	
Analysis Method : C:\CHEM32\2\METHODS\5-50A.M	
Last changed : 2018-05-23 05:34:24 下午 by ZQQ	
	(modified after loading)
Catalog No : CS-0878 Batch#30469	
	A-RP-243

Additional Info : Peak(s) manually integrated



=====  
Area Percent Report  
=====

Sorted By : Signal  
Multiplier: : 1.0000  
Dilution: : 1.0000  
Use Multiplier & Dilution Factor with ISTDs

Signal 1: DAD1 B, Sig=254,4 Ref=off

Peak #	RetTime [min]	Type	Width [min]	Area [mAU*s]	Height [mAU]	Area %
1	3.983	BB	0.0352	3.15217	1.40415	0.0988
2	4.404	MF	0.0415	3183.56104	1278.70996	99.8254
3	4.772	FM	0.0577	1.14668	3.31279e-1	0.0360
4	4.923	MM	0.0472	4.98483e-1	1.76091e-1	0.0156
5	5.861	MM	0.0501	7.72088e-1	2.57082e-1	0.0242

Totals : 3189.13046 1280.87856