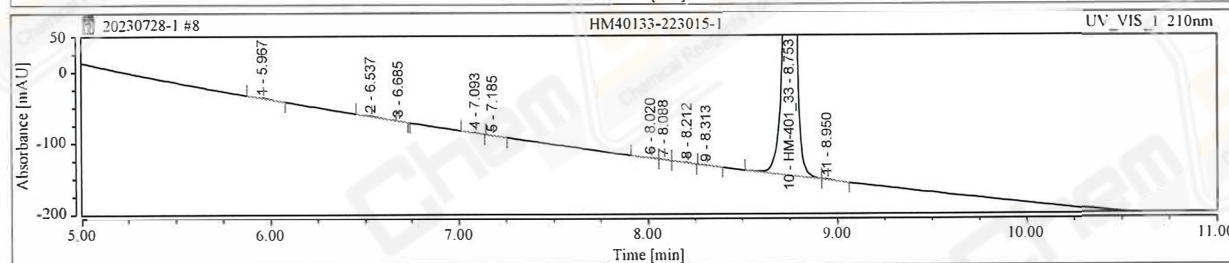
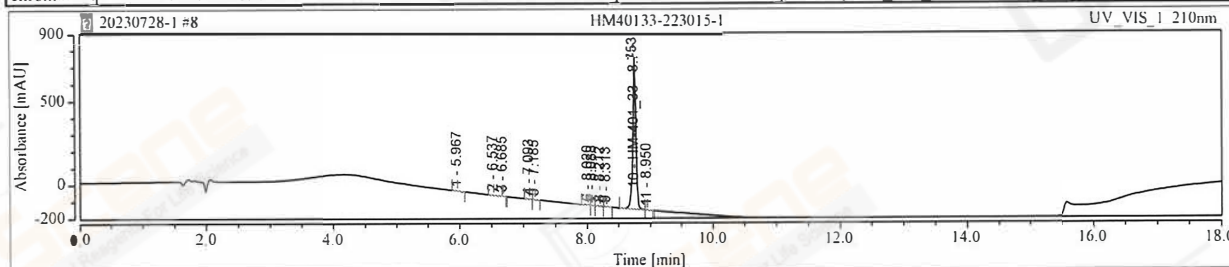


CAS NO.: 93267-04-0

Chromatogram and Results

Sample ID:	HM40133-223015-1	Comment:	AH-LC113
Batch No:		Channel:	UV_VIS_1
Vial Number:	GA7	Wavelength:	210.0
Injection Type:	Unknown	Injection Volume:	5.00
Instrument:	LC10409	Injection Time:	28/07/2023 14:48
Instrument Method:	HM40133-10B-80(RP-HPLC)	InstMeth.creation_t:	26/07/2023 12:32
Processing Method:	HM40133	Last update_time:	28/07/2023 15:49
seq.creation_operator:	Azhangl		

chrom://ahqc014/CMDATA/Instrument Data/LC10409/New Folder/HM40133/Sequence/20230728-1.seq/164.smp/UV_VIS_1.channel/UV_VIS_1.chm



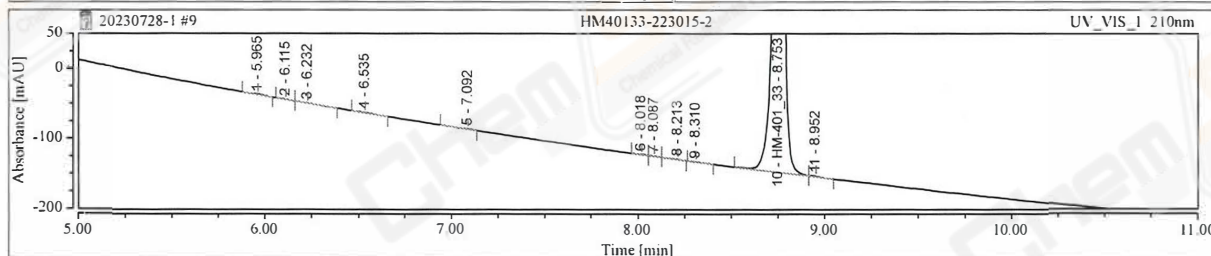
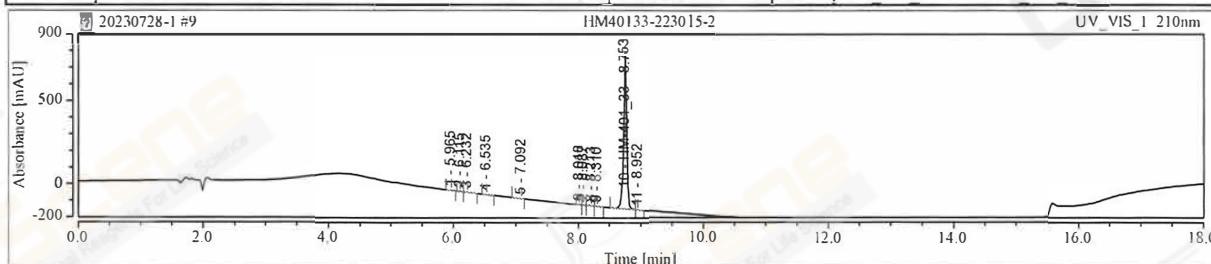
No.	Retention Time min	Area mAU*min	Height mAU	Plates (USP)	Resolution (USP)	Asymmetry (USP)	Rel. Area %	20
1	5.967	0.057	0.904	53060	5.56	1.09	0.107	
2	6.537	0.031	0.321	66609	5.63	1.63	0.059	
3	6.685	0.001	0.030	n.a.	n.a.	n.a.	0.002	
4	7.093	0.013	0.266	86511	0.94	0.80	0.025	
5	7.185	0.006	0.115	84358	9.04	1.47	0.011	
6	8.020	0.025	0.453	139549	0.83	n.a.	0.047	
7	8.088	0.015	0.289	167686	0.85	n.a.	0.028	
8	8.212	0.025	0.291	24489	0.66	n.a.	0.048	
9	8.313	0.020	0.390	115678	4.79	1.28	0.037	
10	8.753	52.879	921.779	166306	1.23	0.92	99.525	HM-401 33
11	8.950	0.059	0.944	23571	n.a.	n.a.	0.111	
Total:		53.131	925.781		29.54			

CAS NO.: 93267-04-0

Chromatogram and Results

Sample ID:	HM40133-223015-2	Comment:	AH-LC113
Batch No:		Channel:	UV_VIS_1
Vial Number:	GA8	Wavelength:	210.0
Injection Type:	Unknown	Injection Volume:	5.00
Instrument:	LC10409	Injection Time:	28/07/2023 15:07
Instrument Method:	HM40133-10B-80(RP-HPLC)	InstMeth creation_t:	26/07/2023 12:32
Processing Method:	HM40133	Last update_time:	28/07/2023 15:49
seq.creation_operator:	Azhangl		

chrom://ahqc014/CMDATA/Instrument Data/LC10409/New Folder/HM40133/Sequence/20230728-1.seq-402.smp/UV_VIS_1.channel/UV_VIS_1.chm



No.	Retention Time min	Area mAU*min	Height mAU	Plates (USP)	Resolution (USP)	Asymmetry (USP)	Rel. Area %	20
1	5.965	0.043	0.798	78841	0.63	1.02	0.082	
2	6.115	0.007	0.098	3839	0.37	n.a.	0.013	
3	6.232	0.027	0.234	11717	1.88	n.a.	0.050	
4	6.535	0.018	0.244	80307	6.34	1.43	0.034	
5	7.092	0.019	0.280	115677	8.75	0.65	0.036	
6	8.018	0.020	0.408	62324	0.22	n.a.	0.038	
7	8.087	0.013	0.262	4114	0.36	n.a.	0.026	
8	8.213	0.023	0.269	29193	0.72	n.a.	0.043	
9	8.310	0.020	0.380	189331	5.46	1.46	0.038	
10	8.753	52.386	913.357	166149	1.68	0.91	99.537	HM-401 33
11	8.952	0.054	0.868	57163	n.a.	n.a.	0.102	
Total:		52.629	917.198		26.41			