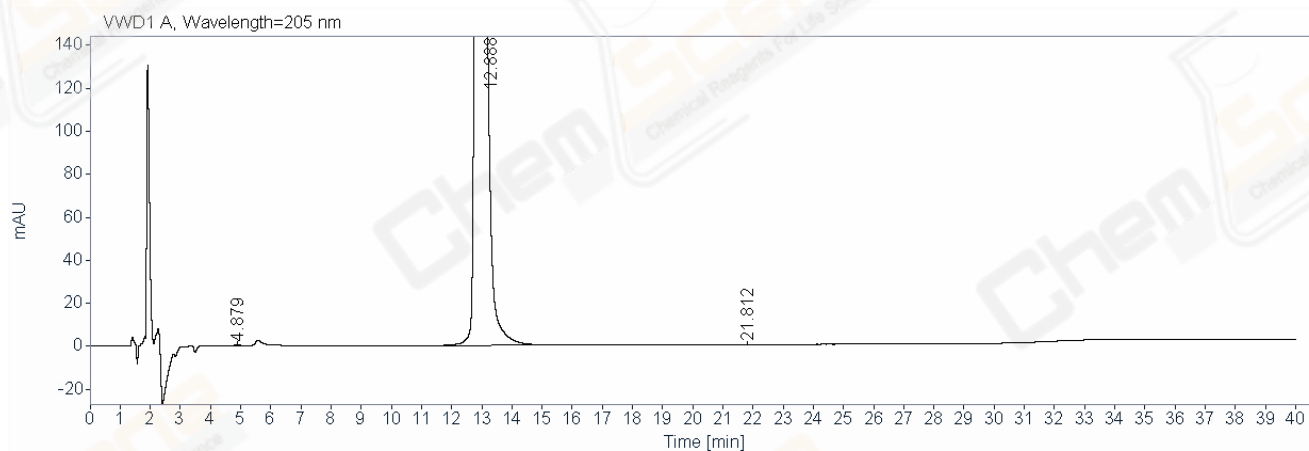
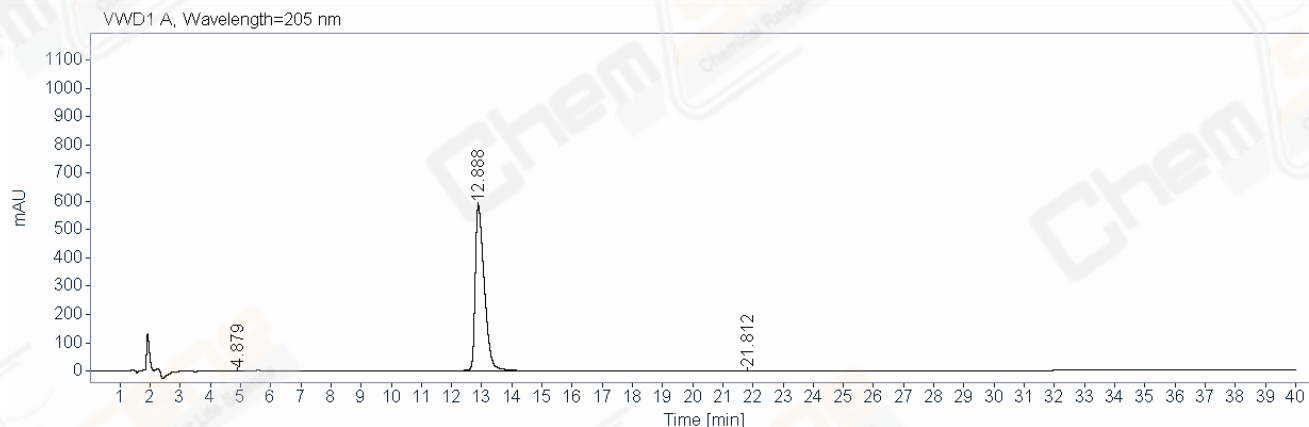


Area Percent Report

Data file: D:\Chem32\1\Data\20180523\195\ZFG5465-013-1_1.D
Catalog No: CS-M2435 Batch#30930
Description: HY-325_4A-20180518 A-RP-312
Instrument: HPLC-08
Injection date: 5/23/2018 7:40:36 PM **Location:** 37
Acq. method: HY-325_4A-C19RS01(RP-HPLC),C,C2.M **Injection:** 1 of 1
Analysis method: HY-325_4A-C19RS01(RP-HPLC),C,C2.M **Injection volume:** 10.000
Last changed: 5/24/2018 6:28:23 PM **Acq. operator:** css_740



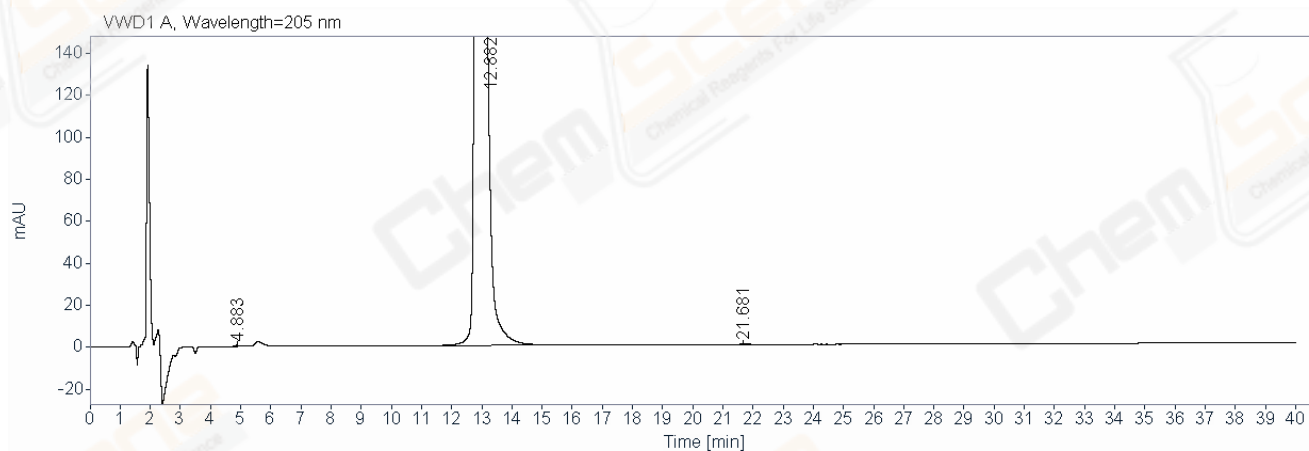
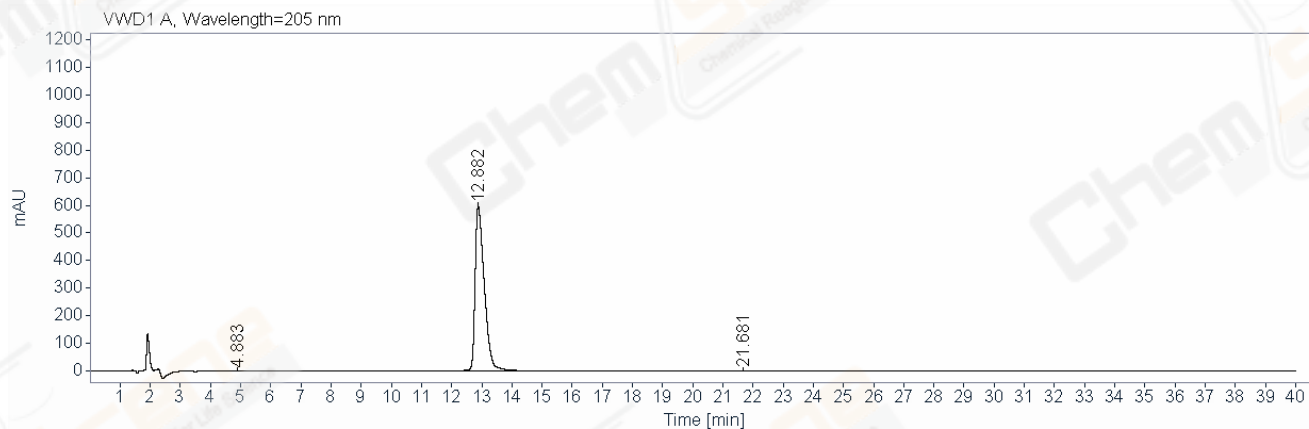
Signal: VWD1 A, Wavelength=205 nm

RT [min]	Type	Width	Area	Height	Area%	Resolution	Tailing	S/N	Plate	Name
4.879	MM	0.1890	5.8271	0.51	0.0471		1.19		4081	
12.888	MM	0.3529	12371.1777	584.24	99.9174	18.59	1.68		8598	
21.812	MM	0.5240	4.4010	0.14	0.0355	14.59	0.86		17086	
	Sum		12381.4058							

Area Percent Report

Area Percent Report

Data file: D:\Chem32\1\Data\20180523\195\ZFG5465-013-1_2.D
Catalog No: CS-M2435 Batch#30930
Description: HY-325_4A-20180518 A-RP-312
Instrument: HPLC-08
Injection date: 5/23/2018 8:22:02 PM **Location:** 38
Acq. method: HY-325_4A-C19RS01(RP-HPLC),C,C2.M **Injection:** 1 of 1
Analysis method: HY-325_4A-C19RS01(RP-HPLC),C,C2.M **Injection volume:** 10.000
Last changed: 5/24/2018 6:28:23 PM **Acq. operator:** css_740



Signal: VWD1 A, Wavelength=205 nm

RT [min]	Type	Width	Area	Height	Area%	Resolution	Tailing	S/N	Plate	Name
4.883	MM	0.1973	6.4168	0.54	0.0504		1.22		4216	
12.882	MM	0.3548	12729.2119	597.93	99.9136	18.61	1.70		8494	
21.681	MM	0.4606	4.5873	0.17	0.0360	16.31	1.31		27809	
	Sum		12740.2161							

Area Percent Report

Area Percent Report

Data file: D:\Chem32\1\Data\20180523\195\ZFG5465-013-1_0.D

Catalog No: CS-M2435 Batch#30930

Description: BK A-RP-312

Instrument: HPLC-08

Injection date: 5/23/2018 6:59:02 PM

Location: 33

Acq. method: HY-325_4A-C19RS01(RP-HPLC),C,C2.M

Injection: 1 of 1

Analysis method: HY-325_4A-C19RS01(RP-HPLC),C,C2.M

Injection volume: 10.000

Last changed: 5/24/2018 6:42:20 PM

Acq. operator: css_740

