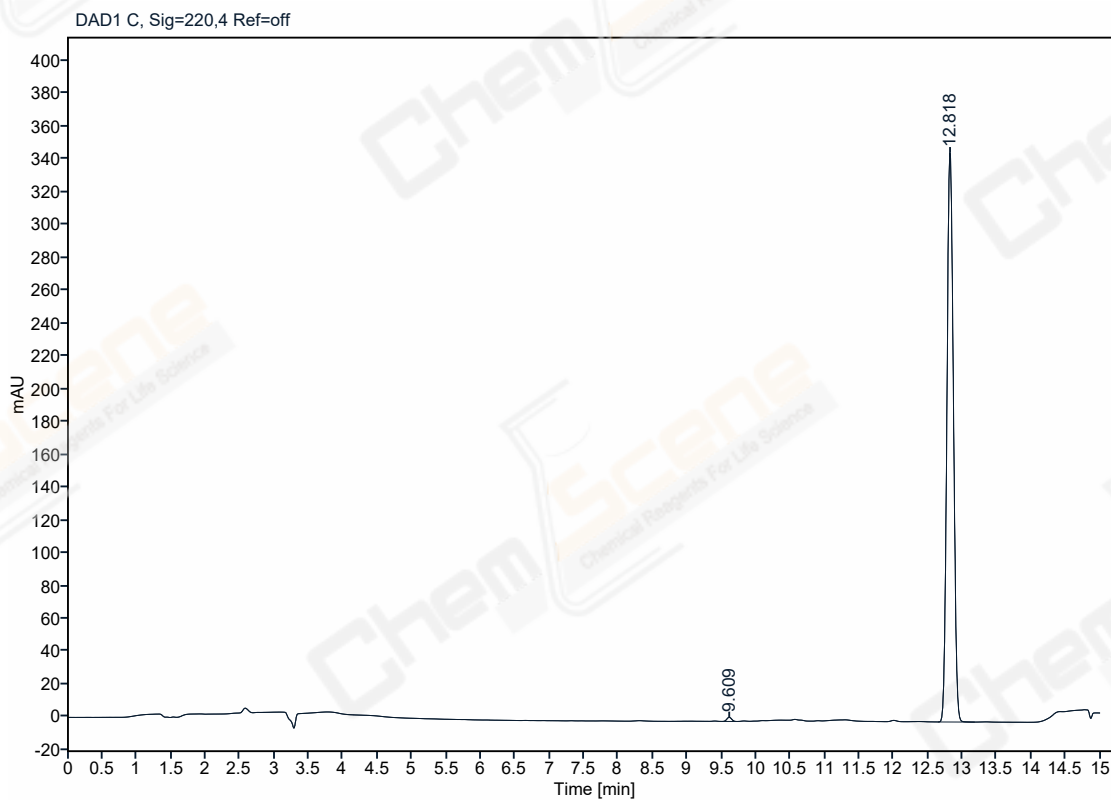


Analysis Report

CAS NO.: 24533-47-9
Acq. method : 10-80(15min).M
Location : P2-B3
Injection date: 2023-12-14 13:54:23+08:00
Injection volume: 5.000
Acq. operator : 1260



Signal: DAD1 C, Sig=220,4 Ref=off

No.	RT [min]	Height	Height %	Area	Area%
1	9.609	2.54	0.728	12.23	0.535
2	12.818	346.77	99.272	2274.86	99.465
	Sum	349.3167	100.00	2287.0934	100.0000