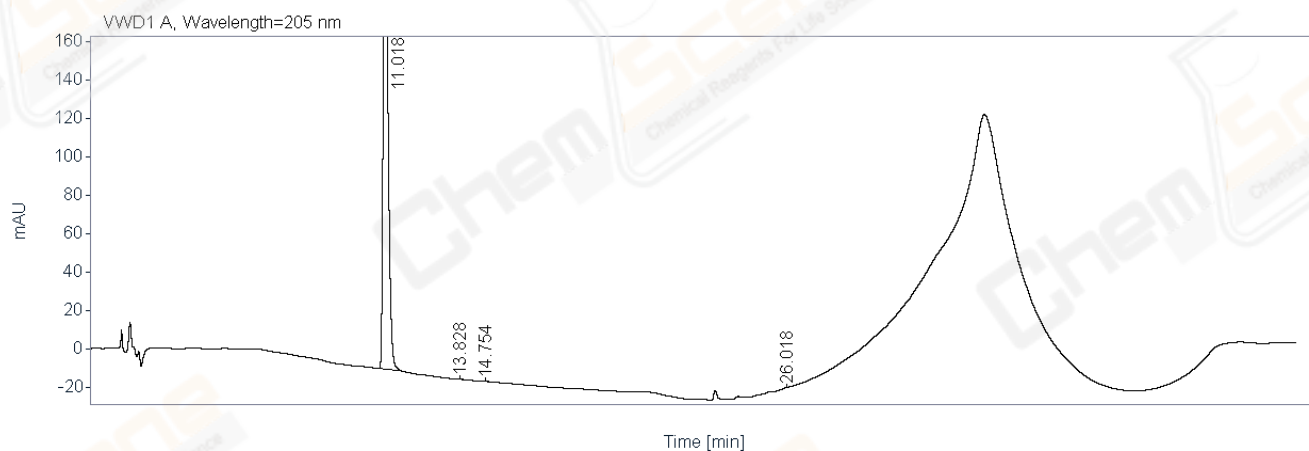
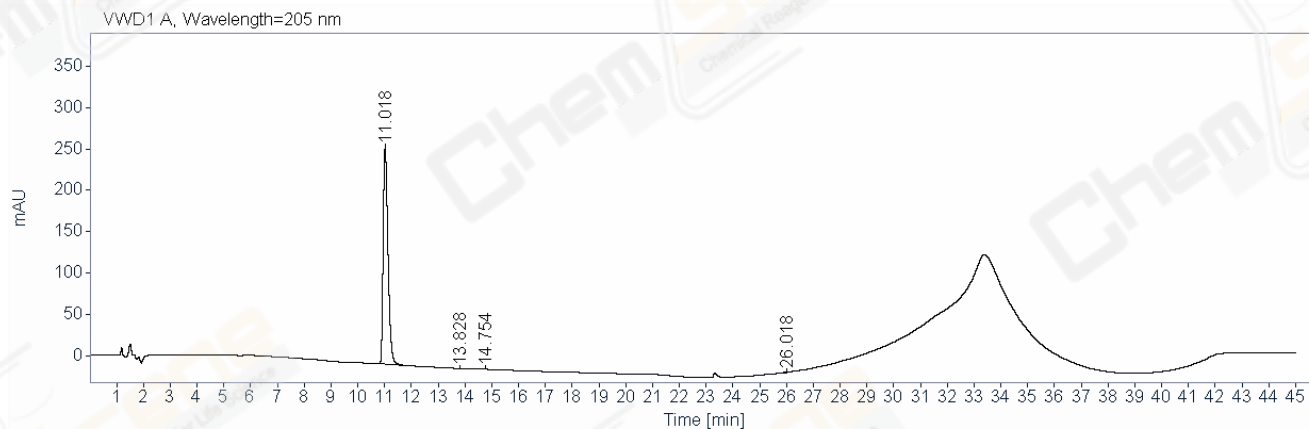


Area Percent Report

Data file: D:\Chem32\1\Data\20181207\286\007-99-LXF6229-015-3_1.D
CAS NO.: 247068-85-5
Description: HY-325_4A-20181204 A-RP-395
Instrument: HPLC-08
Injection date: 12/8/2018 2:46:07 PM
Acq. method: HY-325_4A-H01P16,BC,205NM(RP-HPLC)-BKW.M
Analysis method: HY-325_4A-H01P16,BC,205NM(RP-HPLC)-BKW.M
Last changed: 12/8/2018 6:29:39 PM

Location: 99
Injection: 1 of 1
Injection volume: 10.000
Acq. operator: ljl_1212



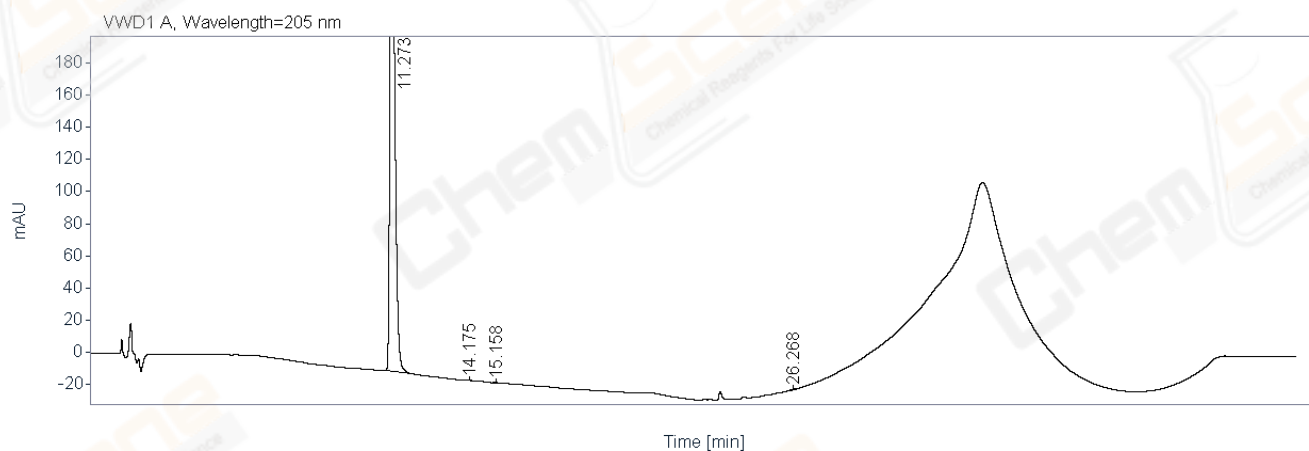
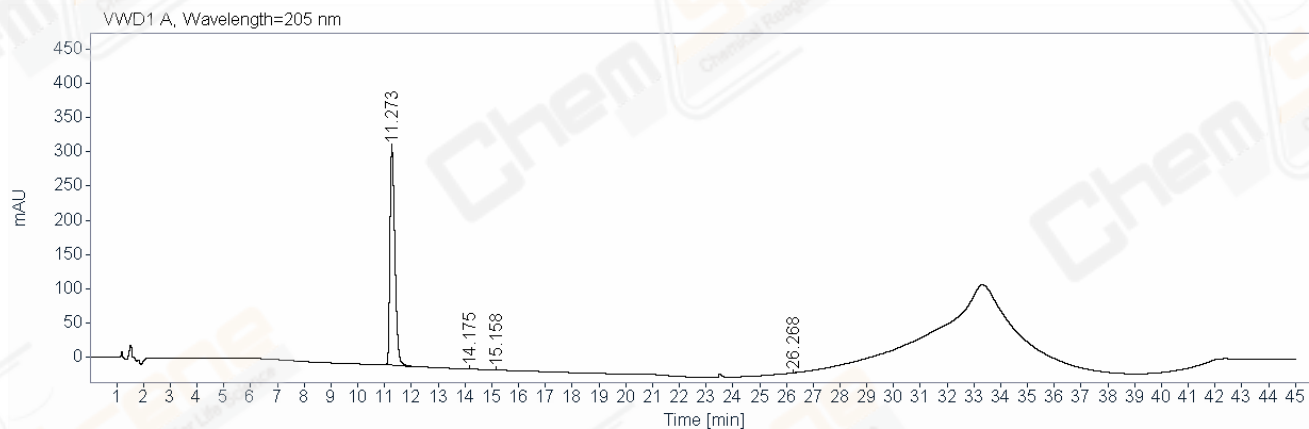
Signal: VWD1 A, Wavelength=205 nm

| RT [min] | Type | Width | Area | Height | Area% | Resolution | Tailing | S/N | Plate | Name |
|----------|------|--------|-----------|--------|---------|------------|---------|-----|--------|------|
| 11.018 | MM | 0.2089 | 3282.6667 | 261.87 | 99.7828 | | 1.43 | | 18071 | |
| 13.828 | MM | 0.1721 | 1.0155 | 0.10 | 0.0309 | 9.22 | 1.23 | | 38081 | |
| 14.754 | MM | 0.1808 | 3.5156 | 0.32 | 0.1069 | 3.18 | 0.89 | | 38331 | |
| 26.018 | MM | 0.1341 | 2.6156 | 0.33 | 0.0795 | 43.28 | 0.83 | | 226217 | |
| | Sum | | 3289.813 | | | | | | | |

Area Percent Report

Data file: D:\Chem32\1\Data\20181207\286\LXF6229-015-3_2.D
CAS NO.: 247068-85-5
Description: HY-325_4A-20181204 A-RP-395
Instrument: HPLC-08
Injection date: 12/8/2018 3:35:33 PM
Acq. method: HY-325_4A-H01P16,BC,205NM(RP-HPLC)-BKW.M
Analysis method: HY-325_4A-H01P16,BC,205NM(RP-HPLC)-BKW.M
Last changed: 12/8/2018 6:29:39 PM

Location: 90
Injection: 1 of 1
Injection volume: 10.000
Acq. operator: ljl_1212



Signal: VWD1 A, Wavelength=205 nm

| RT [min] | Type | Width | Area | Height | Area% | Resolution | Tailing | S/N | Plate | Name |
|----------|------|--------|---------------|--------|---------|------------|---------|-----|--------|------|
| 11.273 | MM | 0.2130 | 4065.378 4 | 318.03 | 99.8216 | | 1.47 | | 18257 | |
| 14.175 | MM | 0.1795 | 1.0874 | 0.10 | 0.0267 | 9.22 | 1.04 | | 36259 | |
| 15.158 | MM | 0.1860 | 3.5728 | 0.32 | 0.0877 | 3.31 | 0.92 | | 41099 | |
| 26.268 | MM | 0.1555 | 2.6046 | 0.28 | 0.0640 | 41.15 | 1.16 | | 190790 | |
| | Sum | | 4072.643 | | | | | | | |