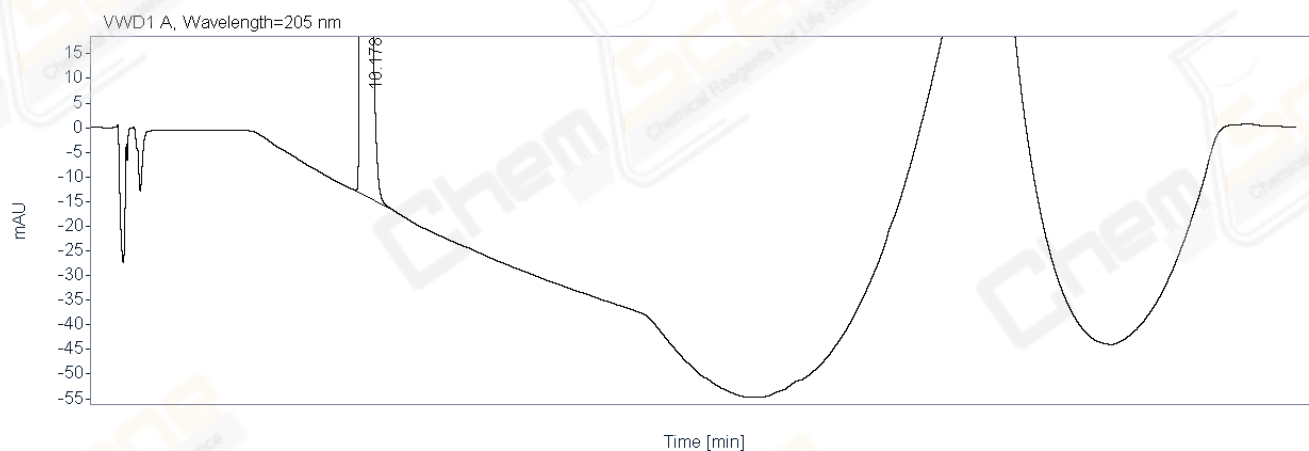
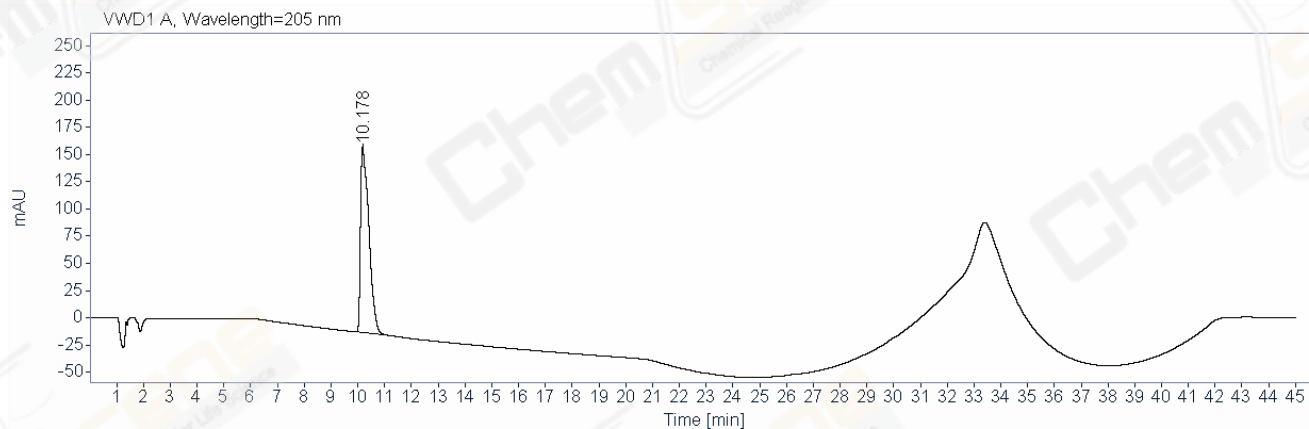


Area Percent Report

Data file: D:\Chem32\1\Data\20181224\321\LXF6229-025-3_1.D
Sample name: LXF6229-025-3_1
Description: HY-325_4A-20181218 A-RP-395
Instrument: HPLC-08
Injection date: 12/24/2018 2:42:37 PM
Acq. method: HY-325_4A-H01P16(RP-HPLC).AD.C2.M
Analysis method: HY-325_4A-H01P16(RP-HPLC).AD.C2.M
Last changed: 12/25/2018 10:50:47 AM

CAS NO.: 247068-85-5
Location: 61
Injection: 1 of 1
Injection volume: 10.000
Acq. operator: ljl_1212



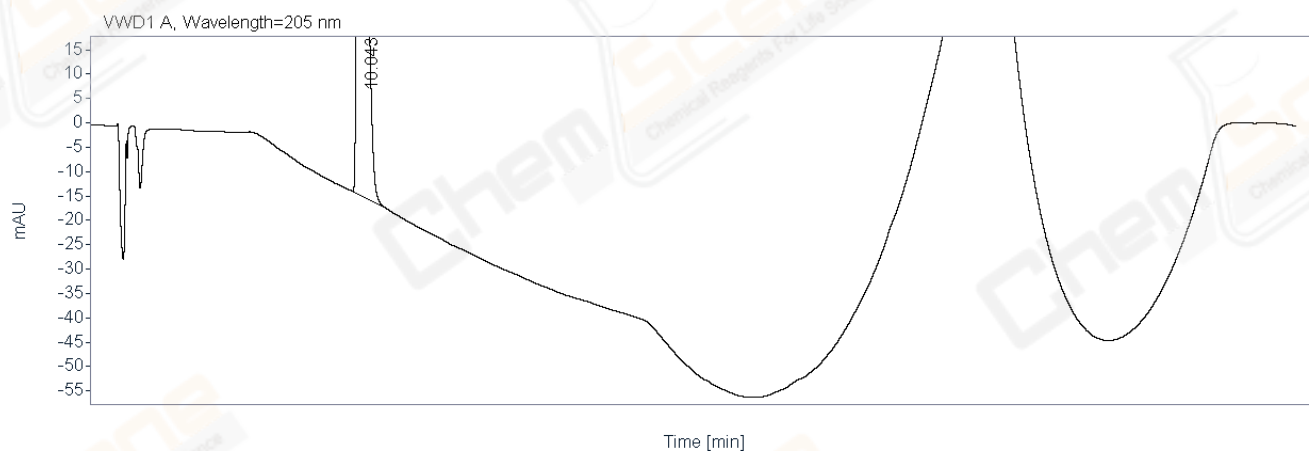
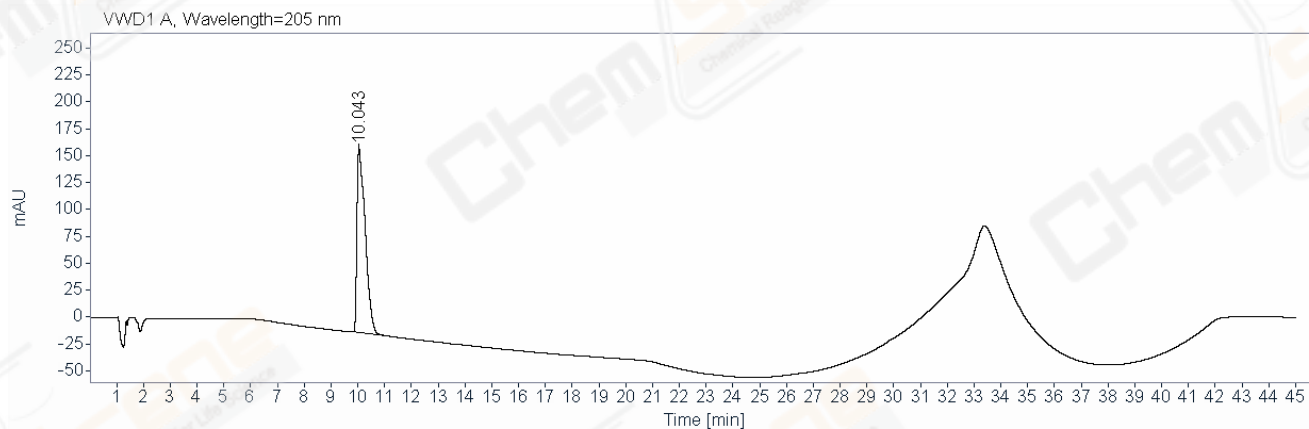
Signal: VWD1 A, Wavelength=205 nm

RT [min]	Type	Width	Area	Height	Area%	Resolution	Tailing	S/N	Plate	Name
10.178	MM	0.3633	3699.679 2	169.72	100.0000		2.26		5313	
	Sum		3699.679							

Area Percent Report

Data file: D:\Chem32\1\Data\20181224\321\LXF6229-025-3_2.D
Sample name: LXF6229-025-3_2
Description: HY-325_4A-20181218 A-RP-395
Instrument: HPLC-08
Injection date: 12/24/2018 3:30:19 PM
Acq. method: HY-325_4A-H01P16(RP-HPLC).AD.C2.M
Analysis method: HY-325_4A-H01P16(RP-HPLC).AD.C2.M
Last changed: 12/25/2018 10:50:47 AM

CAS NO.: 247068-85-5
Location: 62
Injection: 1 of 1
Injection volume: 10.000
Acq. operator: ljl_1212



Signal: VWD1 A, Wavelength=205 nm

RT [min]	Type	Width	Area	Height	Area%	Resolution	Tailing	S/N	Plate	Name
10.043	MM	0.3581	3699.075 2	172.18	100.0000		2.26		5046	
	Sum		3699.075							