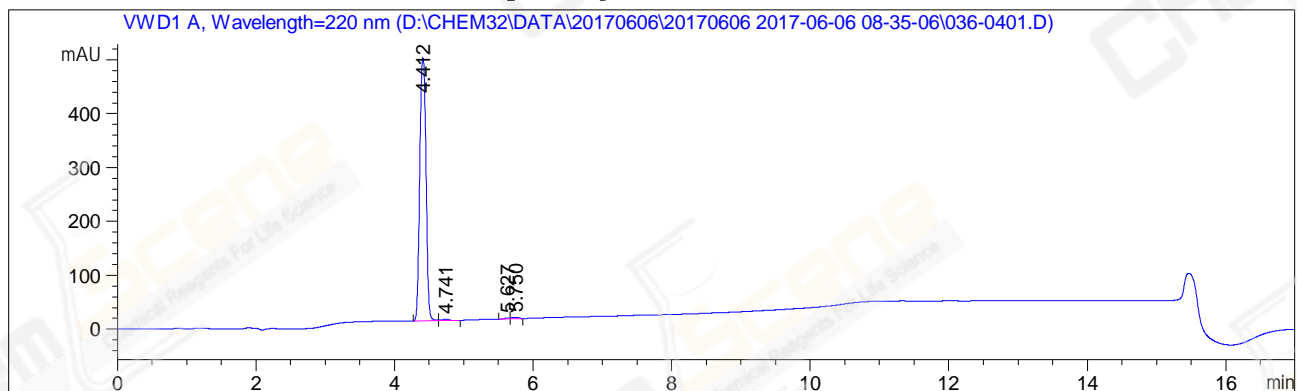


=====
Acq. Operator : WRH(HPLC-09) Seq. Line : 4
Acq. Instrument : Instrument 1 Location : Vial 36
Injection Date : 6/6/2017 9:24:41 AM Inj : 1
Inj Volume : 5.000 µl
Different Inj Volume from Sequence ! Actual Inj Volume : 1.000 µl
Acq. Method : D:\CHEM32\DATA\20170606\20170606 2017-06-06 08-35-06\10-80A(220NM)BC.M
Last changed : 5/19/2017 12:59:44 PM by WRH(HPLC-09)
Analysis Method : D:\CHEM32\METHODS\RP-HPLC\HY-361_4E-S125P(RP-HPLC),AD,C2.M
Last changed : 6/6/2017 10:22:15 AM by WRH(HPLC-09)
Catalog No : CS-W004687 Batch#37778
A-RP-199

Additional Info : Peak(s) manually integrated



=====
Area Percent Report
=====

Sorted By : Signal
Multiplier: : 1.0000
Dilution: : 1.0000
Use Multiplier & Dilution Factor with ISTDs

Signal 1: VWD1 A, Wavelength=220 nm

Peak #	RetTime [min]	Type	Width [min]	Area [mAU*s]	Height [mAU]	Area %
1	4.412	BB	0.1020	3053.84546	488.08295	98.5295
2	4.741	BB	0.1153	17.38585	2.35156	0.5609
3	5.627	MF	0.1120	8.86177	1.31874	0.2859
4	5.750	FM	0.1118	19.32857	2.88156	0.6236

Totals : 3099.42165 494.63481

=====
*** End of Report ***