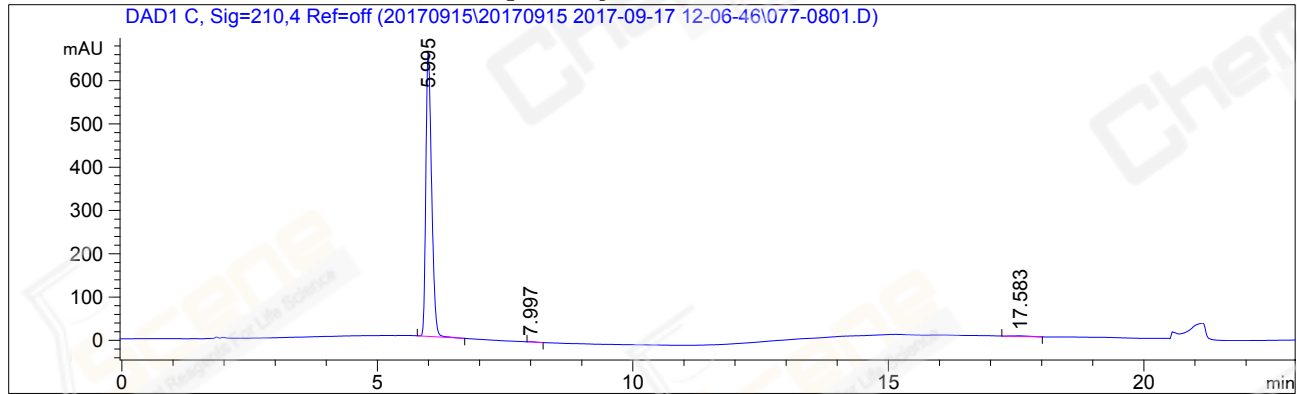


```
=====
Acq. Operator   : LHX                               Seq. Line :    8
Acq. Instrument : HPLC-12                           Location  : Vial 77
Injection Date  : 2017-09-17 03:07:54                Inj       :    1
                                                    Inj Volume: 5.0 µl

Acq. Method     : C:\CHEM32\2\DATA\20170915\20170915 2017-09-17 12-06-46\30-90A,15MIN,210NM.M
Last changed    : 2017-09-15 05:45:55 by ZLL
Analysis Method : C:\CHEM32\2\METHODS\30-90A,15MIN,210NM.M
Last changed    : 2017-09-18 09:33:28 by LHX
                  (modified after loading)
Catalog No      : CS-W019429 Batch#39050
                  A-RP-150
=====
```

Additional Info : Peak(s) manually integrated



=====
Area Percent Report
=====

Sorted By : Signal
Multiplier: : 1.0000
Dilution: : 1.0000
Use Multiplier & Dilution Factor with ISTDs

Signal 1: DAD1 C, Sig=210,4 Ref=off

Peak #	RetTime [min]	Type	Width [min]	Area [mAU*s]	Height [mAU]	Area %
1	5.995	MM	0.1310	5152.20215	655.66125	99.1819
2	7.997	BB	0.1285	5.94907	6.63960e-1	0.1145
3	17.583	MM	0.4160	36.55100	1.46433	0.7036

Totals : 5194.70222 657.78955

=====
*** End of Report ***