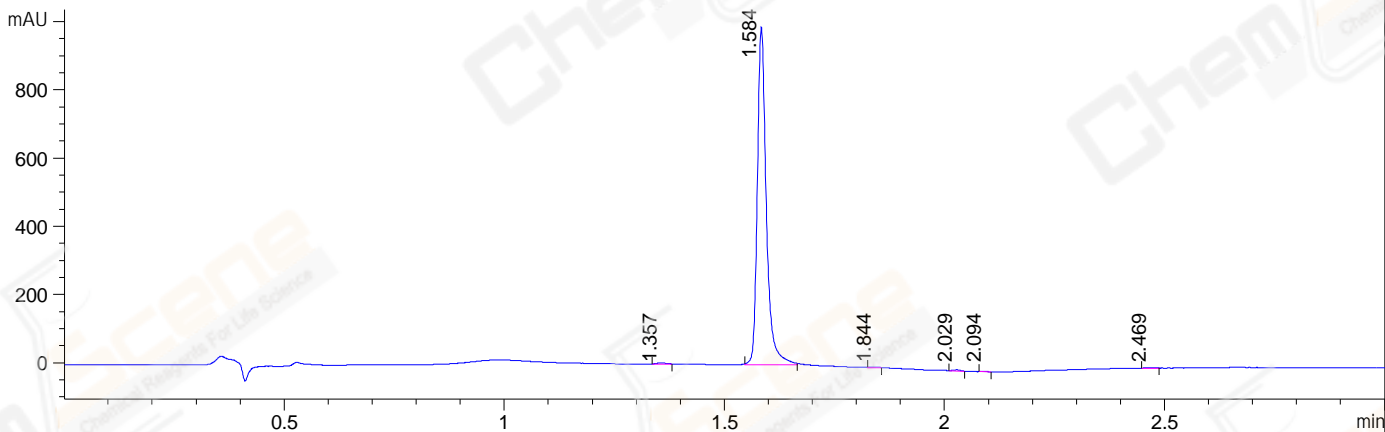
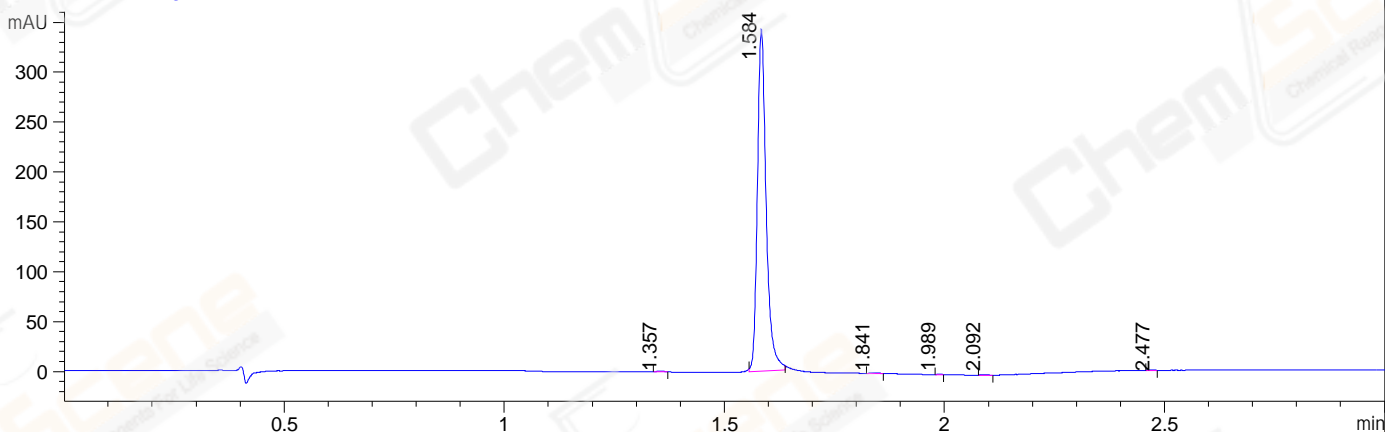


File ..\DATA\2019\20190404\559\BIZ2019-403-WYQ9.D Tgt Mass (CHM):
 Injection Date : 4 Apr 19 12:58 pm +0800 Seq. Line : 49
 Sample Name : BIZ2019-403-WYQ9 Location : P2-A-03
 Acq. Operator : LQ_1052 Inj : 1
 Spec. Reported : MS Integration Inj Volume : 6 ul
 Acq. Method : D:\Chem32\1\data\2019\20190404\559\1-POS-3MIN-1.M
 Analysis Method : D:\CHEM32\1\DATA\2019\20190404\559\1-POS-3MIN-1.M
 Catalog No : CS-4901 Batch#39569
 Method Info : Mobile Phase: A: water(0.01%TFA) B:ACN(0.01%TFA)
 Gradient: 5% to 95%B within 1.3 min
 Flow Rate :1.8ml/min
 Column :SunFire C18, 4.6*50mm,3.5um A-RP-314
 Oven Temperature : 45□

DAD1 B, Sig=214,4 Ref=off



DAD1 C, Sig=254,4 Ref=off



Integration Results for DAD1 B, Sig=214,4 Ref=off

RetTim	Width	Area	Height	Area%
1.36	0.02	4.77	3.54	0.34
1.58	0.02	1406.38	990.08	99.05
1.84	0.02	2.16	1.76	0.15
2.03	0.02	3.60	3.33	0.25
2.09	0.01	1.06	1.21	0.07
2.47	0.02	1.87	1.33	0.13

Integration Results for DAD1 C, Sig=254,4 Ref=off

RetTim	Width	Area	Height	Area%
1.36	0.02	0.83	0.70	0.17
1.58	0.02	476.36	343.16	99.54
1.84	0.02	0.71	0.56	0.15
1.99	0.01	0.16	0.23	0.03
2.09	0.02	0.30	0.26	0.06
2.48	0.02	0.22	0.19	0.05