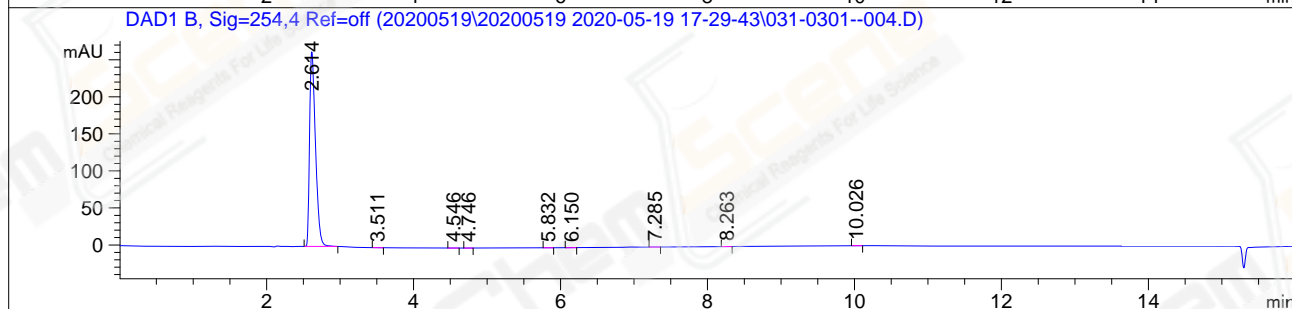
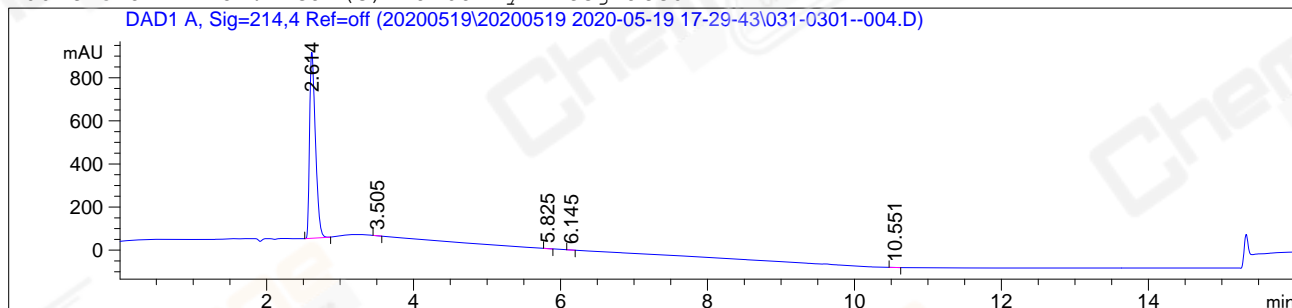


```

=====
Acq. Operator   : JLW_1433                      Seq. Line :    4
Acq. Instrument : HPLC-13                      Location  :   31
Injection Date  : 5/19/2020 6:21:26 PM         Inj       :    1
                                           Inj Volume: 5.000 µl
Different Inj Volume from Sample Entry! Actual Inj Volume : 1.000 µl
Acq. Method     : C:\Chem32\1\Data\20200519\20200519 2020-05-19 17-29-43\10-90A 214NM.M
Last changed    : 5/19/2020 5:29:43 PM by JLW_1433
Analysis Method : C:\Chem32\1\Data\20200519\20200519 2020-05-19 17-29-43\10-90A 214NM.M (
                  Sequence Method)
Last changed    : 5/20/2020 9:59:59 AM by JLW_1433
Catalog No     : CS-W019632 A-RP-519
  
```

Additional Info : Peak(s) manually integrated



Area Percent Report

```

Sorted By      : Signal
Multiplier     : 1.0000
Dilution       : 1.0000
Do not use Multiplier & Dilution Factor with ISTDs
  
```

Signal 1: DAD1 A, Sig=214,4 Ref=off

Peak #	RetTime [min]	Type	Width [min]	Area [mAU*s]	Height [mAU]	Area %
1	2.614	MM	0.0911	4746.93799	868.39966	99.8275
2	3.505	MM	0.0640	2.44900	6.37274e-1	0.0515
3	5.825	MM	0.0596	1.75643	4.91290e-1	0.0369
4	6.145	MM	0.0571	1.66732	4.86549e-1	0.0351
5	10.551	MM	0.0629	2.33069	6.17943e-1	0.0490

Totals : 4755.14142 870.63271

Signal 2: DAD1 B, Sig=254,4 Ref=off

Peak #	RetTime [min]	Type	Width [min]	Area [mAU*s]	Height [mAU]	Area %
1	2.614	MM R	0.0918	1456.28198	264.35510	99.7421
2	3.511	MM R	0.0589	1.23467	3.49620e-1	0.0846
3	4.546	MM R	0.0564	4.49928e-1	1.32991e-1	0.0308
4	4.746	MM R	0.0579	1.77745e-1	5.11927e-2	0.0122
5	5.832	MM R	0.0554	4.32929e-1	1.30315e-1	0.0297
6	6.150	MM R	0.0661	3.85711e-1	9.71831e-2	0.0264
7	7.285	MM R	0.0618	3.05477e-1	8.24197e-2	0.0209
8	8.263	MM R	0.0608	4.42673e-1	1.21354e-1	0.0303
9	10.026	MM R	0.0626	3.36783e-1	8.96663e-2	0.0231

Totals : 1460.04790 265.40985

=====
*** End of Report ***