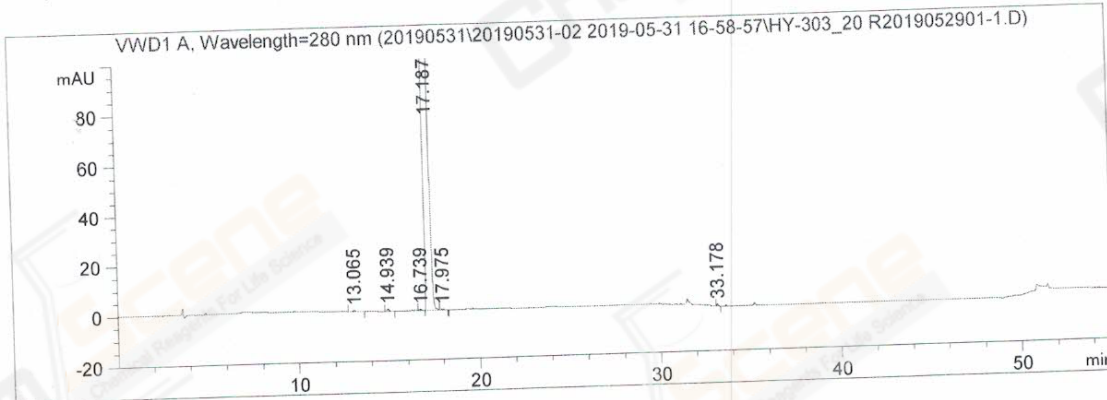


CAS NO.: 1032900-25-6

```
=====
Acq. Operator   : HPLC-08 QC-01(LF)           Seq. Line :    3
Acq. Instrument : HPLC-08                     Location  :    3
Injection Date  : 5/31/2019 6:52:54 PM        Inj       :    1
                                           Inj Volume: 5.000 µl
Acq. Method     : d:\Chem32\1\Data\20190531\20190531-02 2019-05-31 16-58-57\HY-303_20-H01RS10
                                           .M
Last changed    : 5/31/2019 4:58:58 PM by HPLC-08 QC-01(LF)
Analysis Method : d:\Chem32\1\Data\20190531\20190531-02 2019-05-31 16-58-57\HY-303_20-H01RS10
                                           .M (Sequence Method)
Last changed    : 5/31/2019 7:51:20 PM by HPLC-08 QC-01(LF)
Sample Info     : A-RP-254
=====
```



=====  
 Area Percent Report  
 =====

```
Sorted By      :      Signal
Calib. Data Modified : 5/31/2019 7:21:22 PM
Multiplier     :      1.0000
Dilution       :      1.0000
Do not use Multiplier & Dilution Factor with ISTDs
```

Signal 1: VWD1 A, Wavelength=280 nm

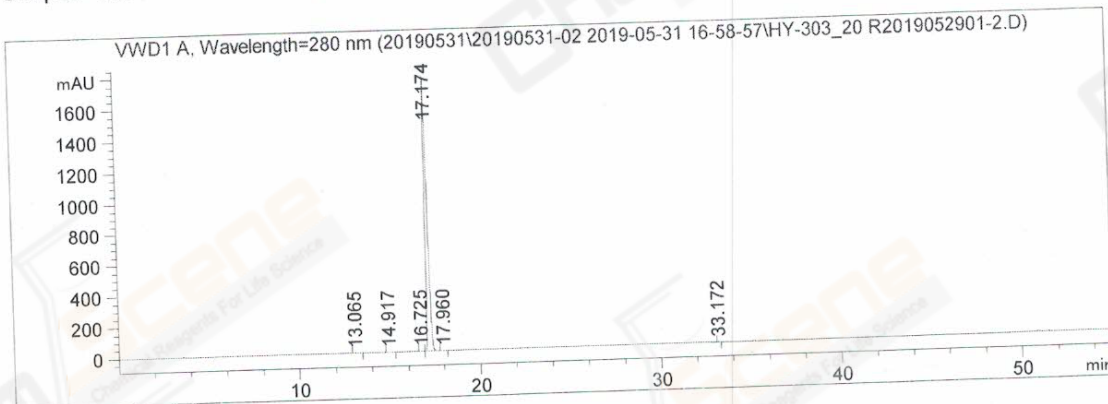
Peak #	RetTime [min]	Type	Width [min]	Area [mAU*s]	Area %	Name
1	13.065	VV R	0.1303	3.85013	0.0232	?
2	14.939	VV R	0.1162	6.27749	0.0378	?
3	16.739	BV E	0.1220	4.69648	0.0283	?
4	17.187	VV R	0.1488	1.65891e4	99.8648	HY-303_20
5	17.975	VV E	0.1387	3.34034	0.0201	?
6	33.178	BB	0.0748	4.29435	0.0259	?

Totals : 1.66115e4

=====  
 \*\*\* End of Report \*\*\*

CAS NO.: 1032900-25-6

```
=====
Acq. Operator   : HPLC-08 QC-01(LF)           Seq. Line :    4
Acq. Instrument : HPLC-08                     Location  :    4
Injection Date  : 5/31/2019 7:49:22 PM        Inj       :    1
                                           Inj Volume: 5.000 µl
Acq. Method     : d:\Chem32\1\Data\20190531\20190531-02 2019-05-31 16-58-57\HY-303_20-H01RS10
                                           .M
Last changed    : 5/31/2019 7:21:27 PM by HPLC-08 QC-01(LF)
Analysis Method : d:\Chem32\1\Data\20190531\20190531-02 2019-05-31 16-58-57\HY-303_20-H01RS10
                                           .M (Sequence Method)
Last changed    : 5/31/2019 8:45:58 PM by HPLC-08 QC-01(LF)
Sample Info     : A-RP-254
=====
```



=====  
 Area Percent Report  
 =====

```
Sorted By      : Signal
Calib. Data Modified : 5/31/2019 7:21:22 PM
Multiplier     : 1.0000
Dilution       : 1.0000
Do not use Multiplier & Dilution Factor with ISTDs
```

Signal 1: VWD1 A, Wavelength=280 nm

Peak #	RetTime [min]	Type	Width [min]	Area [mAU*s]	Area %	Name
1	13.065	BV R	0.1221	3.69704	0.0222	?
2	14.917	BV R	0.1210	6.36340	0.0382	?
3	16.725	BV R	0.1260	4.68710	0.0281	?
4	17.174	VV R	0.1489	1.66332e4	99.8644	HY-303_20
5	17.960	VB E	0.1510	3.55448	0.0213	?
6	33.172	BBA	0.0747	4.27818	0.0257	?

Totals : 1.66557e4

=====  
 \*\*\* End of Report \*\*\*