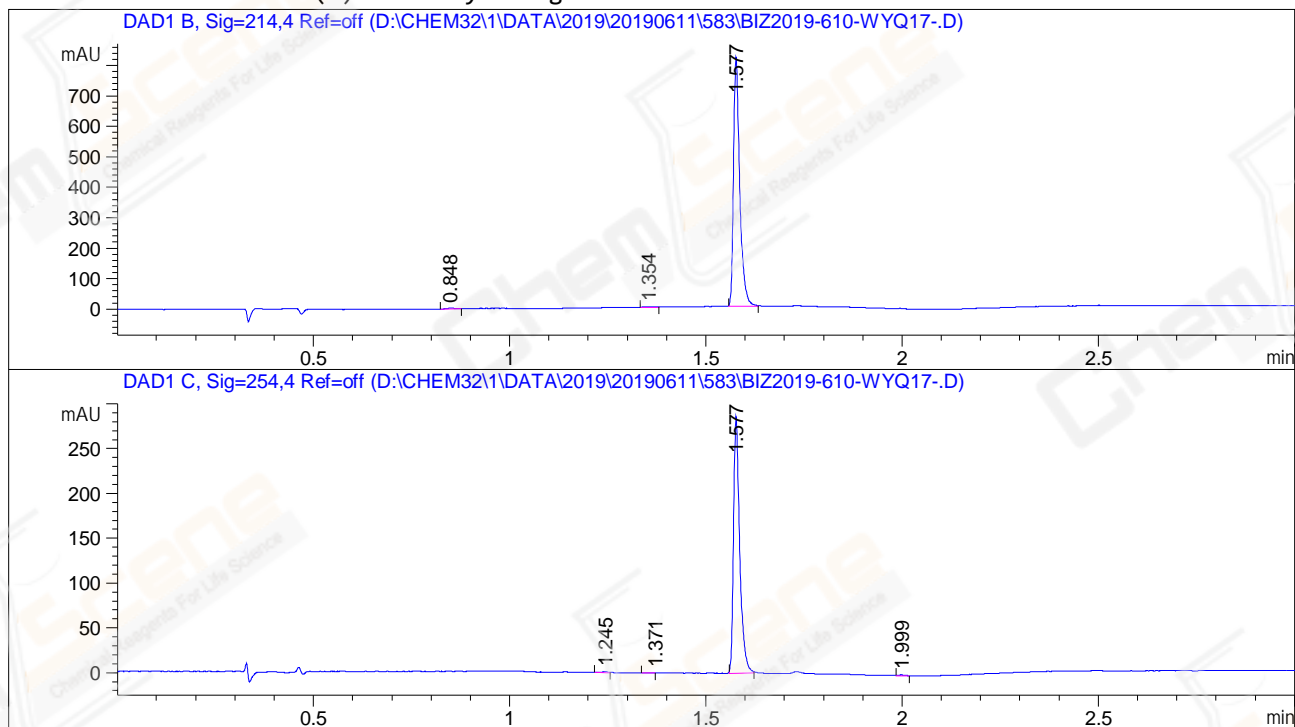


Sample Name: BIZ2019-610-WYQ17

```
=====
Acq. Operator   : ZJ_1432                      Seq. Line :   74
Acq. Instrument : LCMS-02                      Location  : P2-C-01
Injection Date  : 6/11/2019 14:13:12          Inj       :    1
                                           Inj Volume: 1.000 µl
Different Inj Volume from Sample Entry! Actual Inj Volume : 4.000 µl
Acq. Method     : D:\CHEM32\1\DATA\2019\20190611\583\1-POS-3MIN.M
Last changed    : 6/11/2019 12:52:08 by ZJ_1432
Analysis Method : D:\CHEM32\1\DATA\2019\20190611\583\1-POS-3MIN.M (Sequence Method)
Last changed    : 6/13/2019 9:57:12 by ZJ_1432
                 (modified after loading)
Method Info     : Mobile Phase: A: water(0.01%TFA) B:ACN(0.01%TFA)
                 Gradient: 5% to 95%B within 1.3 min
                 Flow Rate :1.8ml/min
                 Column   :SunFire C18, 4.6*50mm,3.5um A-RP-433
                 Oven Temperature : 45°C
=====
```

Catalog No : CS-4901 Batch#41986

Additional Info : Peak(s) manually integrated



```
=====
                          Area Percent Report
=====
```

```
Sorted By      :      Signal
Multiplier     :      1.0000
Dilution       :      1.0000
Do not use Multiplier & Dilution Factor with ISTDs
```

Signal 1: DAD1 B, Sig=214,4 Ref=off

Peak #	RetTime [min]	Type	Width [min]	Area [mAU*s]	Height [mAU]	Area %
1	0.848	MM	0.0245	3.99944	2.72385	0.4387
2	1.354	MM	0.0325	5.27062	2.70638	0.5781
3	1.577	BB	0.0163	902.45319	819.60333	98.9832

Totals : 911.72325 825.03357

Signal 2: DAD1 C, Sig=254,4 Ref=off

Peak #	RetTime [min]	Type	Width [min]	Area [mAU*s]	Height [mAU]	Area %
1	1.245	MM	0.0146	7.18477e-1	8.18325e-1	0.2274
2	1.371	MM	0.0236	4.99419e-1	3.53335e-1	0.1581
3	1.577	BB	0.0163	313.75739	286.14392	99.3004
4	1.999	MM	0.0200	9.92606e-1	8.26565e-1	0.3141

Totals : 315.96789 288.14215

=====  
\*\*\* End of Report \*\*\*