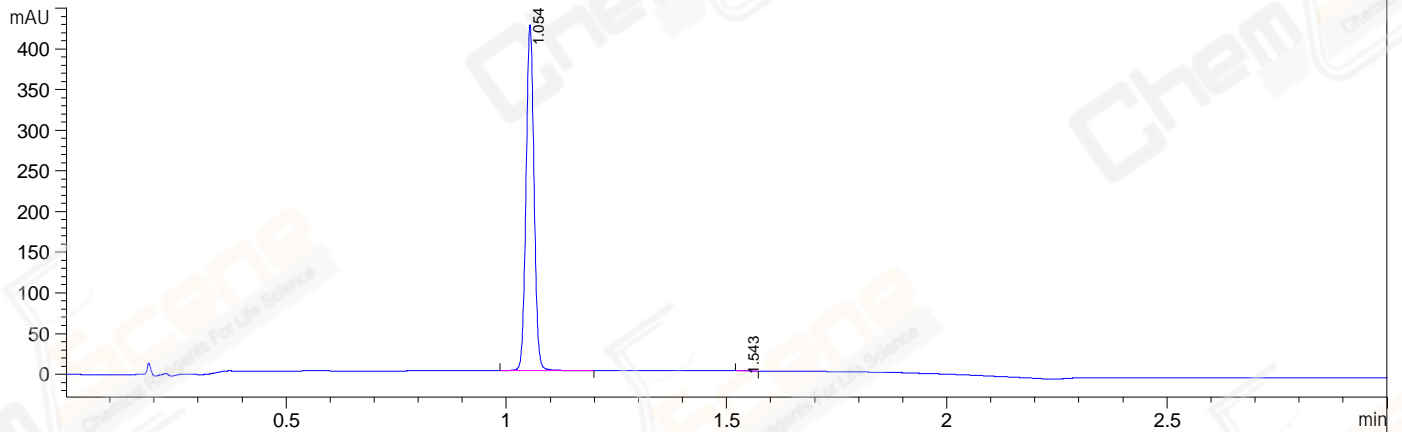


File E:\ChemStation\1\DATA\2024\2024-05\2024-05-10\BIZ2024-510-WLQ7-UPLC-MS-10-033194.D  
Injection Date : 10-May-24, 19:21:56 Tgt Mass(EZX) :  
Sample Name : BIZ2024-510-WLQ7 Location : P2-F-05  
Acq. Operator : LY\_2278 Inj : 1  
Spec. Reported : MS Integration Inj Volume : 0.8 ul  
Acq. Method : E:\ChemStation\1\Methods\1-POS-UPLC3.0MIN(1.2)(150-1000).M  
Analysis Method : E:\CHEMSTATION\1\METHODS\1-POS-UPLC3.0MIN(1.2)(150-1000).M  
CAS NO. : 30007-47-7 WalkUp method: '1-POS-3MIN' Project: BIZ2024  
Method Info : Mobile Phase: A: water(0.01%TFA) B:ACN(0.01%TFA)  
Gradient: 5% to 95%B within 2.0 min  
Flow Rate :1.2ml/min  
Column :Shim-pack Scepter C18-120, 3.0\*33mm,3um  
Oven Temperature : 45C

DAD1 A, Sig=214,4 Ref=off



Integration Results for DAD1 A, Sig=214,4 Ref=off

RetTim	Width	Area	Height	Area%
1.05	0.02	538.27	424.65	99.89
1.54	0.02	0.61	0.54	0.11