

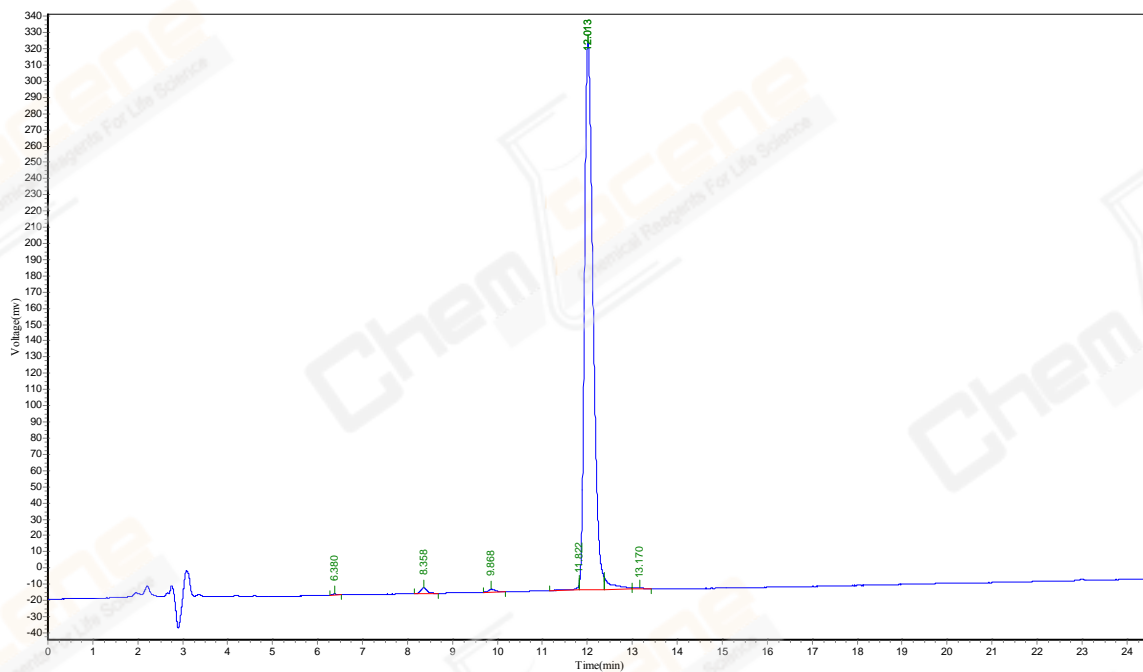
# HPLC REPORT

Analyzed date: 2019-6-30

Analyst: LY  
Product Name: LL-37, human (TFA)  
Column: 250\*4.6mm,Kromasil-C18-5um  
Solvent A: A: 0.1% Trifluoroacetic Acid in 100% Acetonitrile  
Solvent B: B: 0.1% Trifluoroacetic Acid in 100% Water  
Gradient:

	A	B
0.0min	38%	62%
25.0min	63%	37%
25.1min	100%	0%
30.0min		Stop

Volume: 10µl  
Wavelength: 220nm  
Flow rate: 1.0ml/min



Peak No	Ret Time	Height	Area	Conc.
1	6.380	728.171	5462.090	0.1189
2	8.358	3634.800	14444.494	0.3144
3	9.868	1819.726	20130.643	0.4382
4	11.822	4222.926	15887.021	0.3458
5	12.013	336868.719	4433528.500	96.5011
6	12.013	7689.134	92795.039	2.0198
7	13.170	825.504	12028.052	0.2618

Total 100.00