

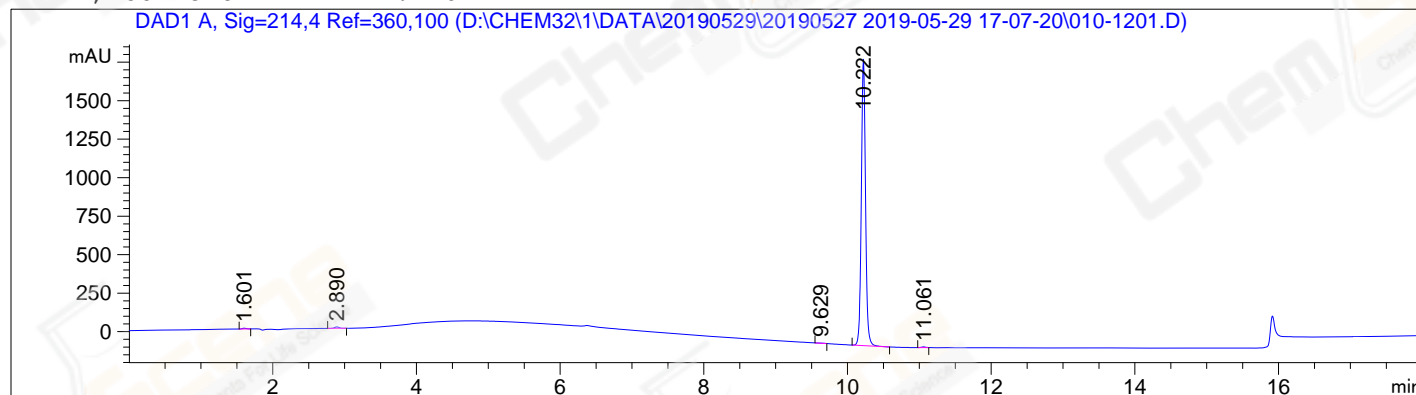
=====
Acq. Operator : YXH Seq. Line : 12
Acq. Instrument : HPLC-12 Location : Vial 10
Injection Date : 5/29/2019 21:02:44 Inj : 1
Inj Volume : 5.0 µl
Acq. Method : D:\CHEM32\1\DATA\20190529\20190527 2019-05-29 17-07-20\10-90A 214NM.M
Last changed : 5/29/2019 17:28:30 by YXH
(modified after loading)
Analysis Method : D:\CHEM32\1\METHOD\10-90B.20MIN.M
Last changed : 5/30/2019 10:01:19 by YXH
Catalog No : CS-W011552 Batch# Lc0527096
A-RP-301

Additional Info : Peak(s) manually integrated
=====

Instrument Conditions : At Start At Stop
Column Temp. (left) : 30.0 30.0 °C
Column Temp. (right) : 30.0 30.0 °C
Pressure : 206.4 211.7 bar
Flow : 1.000 1.000 ml/min

Detector Lamp Burn Times: Current On-Time Accumulated On-Time
DAD 1, UV Lamp : 4.31 2402.8 h
DAD 1, Visible Lamp : OFF 12.0 h

Solvent Description :
PMP1 , Solvent A : 0.05%TFA
PMP1 , Solvent B : ACN



=====
Area Percent Report
=====

Sorted By : Signal
Multiplier: : 1.0000
Dilution: : 1.0000
Use Multiplier & Dilution Factor with ISTDs

Signal 1: DAD1 A, Sig=214,4 Ref=360,100

Peak #	RetTime [min]	Type	Width [min]	Area [mAU*s]	Height [mAU]	Area %
1	1.601	MM R	0.0624	17.30453	4.62063	0.2268
2	2.890	MM R	0.0729	42.11621	9.62781	0.5519
3	9.629	MM R	0.0693	9.58376	2.30417	0.1256
4	10.222	MM R	0.0674	7542.49609	1866.43250	98.8430
5	11.061	MM R	0.0655	19.28732	4.91044	0.2528

Peak #	RetTime [min]	Type	Width [min]	Area [mAU*s]	Height [mAU]	Area %
Totals :				7630.78792	1887.89554	