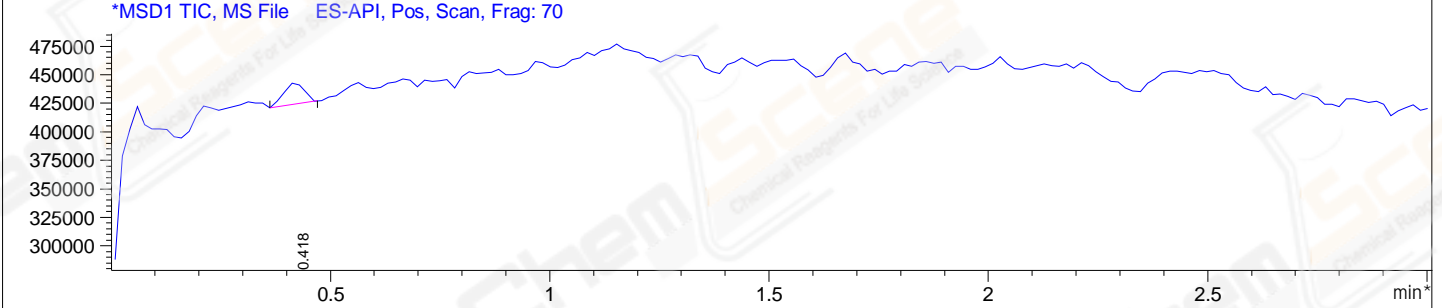
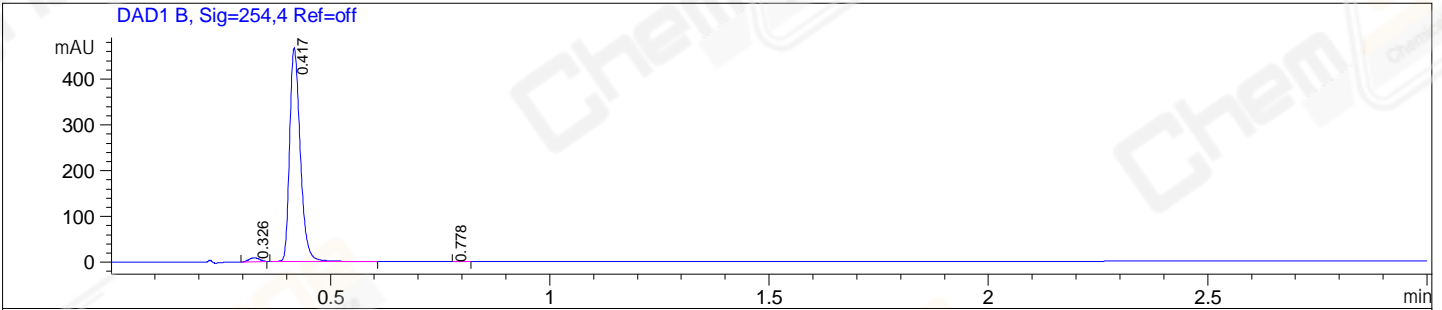


File E:\ChemStation\1\DATA\2024\2024-06\2024-06-28\BIZ2024-627-SCH53-UPLC-MS-10-037500.D  
 Injection Date : 28-Jun-24, 12:11:03 Tgt Mass(EZX) :  
 Sample Name : BIZ2024-627-SCH53 Location : P2-B-03  
 Acq. Operator : LY\_2278 Inj : 1  
 Spec. Reported : MS Integration Inj Volume : 0.8 ul  
 Acq. Method : E:\ChemStation\1\Methods\1-POS-UPLC3.0MIN(1.2)(0-2000).M  
 Analysis Method : E:\CHEMSTATION\1\METHODS\1-POS-UPLC3.0MIN(1.2)(0-2000).M  
 CAS NO. : 83-30-7 WalkUp method: '1-POS-3MIN(0-2000)' Project: BIZ2024  
 Method Info : Mobile Phase: A: water(0.01%TFA) B:ACN(0.01%TFA)  
 Gradient: 5% to 95%B within 2.0 min  
 Flow Rate :1.2ml/min  
 Column :Shim-pack Scepter C18-120, 3.0\*33mm,3um  
 Oven Temperature : 45C



Integration Results for DAD1 B, Sig=254,4 Ref=off

RetTim	Width	Area	Height	Area%
0.33	0.03	14.56	8.65	1.82
0.42	0.03	786.65	466.30	98.09
0.78	0.02	0.76	-0.10	0.09

Integration Results for MSD1 TIC, MS File

RetTim	Width	Area	Height	Area%
0.42	0.05	60382.00	19133.92	100.00