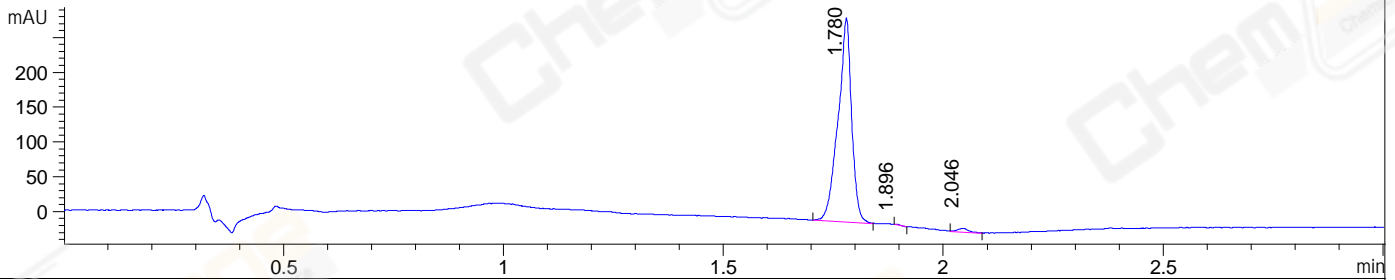
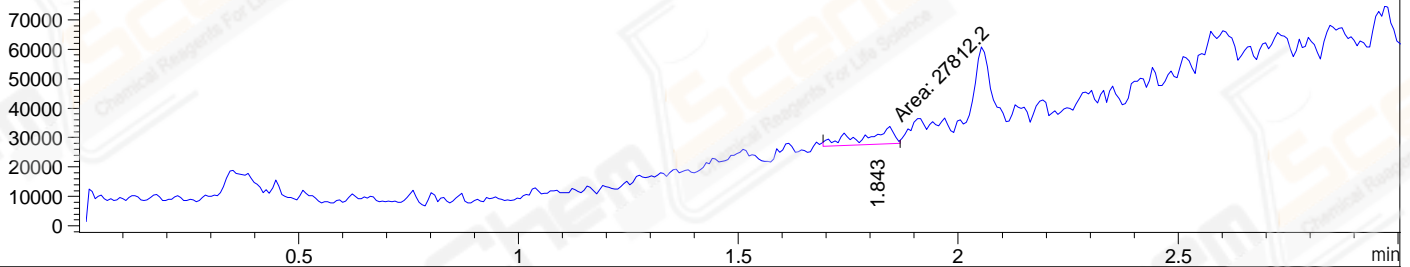


File ..\DATA\2019\20191111\758\BIZ2019-N08-CXL3.D Tgt Mass (CHM):  
 Injection Date : 11 Nov 19 10:55 am +0800 Seq. Line : 21  
 Sample Name : BIZ2019-N08-CXL3 Location : P1-A-04  
 Acq. Operator : ZJ\_1432 Inj : 1  
 Spec. Reported : MS Integration Inj Volume : 30 ul  
 Acq. Method : D:\Chem32\1\data\2019\20191111\758\1-POS-3MIN-1(50-1000).M  
 Analysis Method : D:\CHEM32\1\DATA\2019\20191111\758\1-POS-3MIN-1(50-1000).M  
 Catalog No : CS-0099196 Batch#51713  
 Method Info : Mobile Phase: A: water(0.01%TFA) B:ACN(0.01%TFA)  
 Gradient: 5% to 95%B within 1.3 min  
 Flow Rate :1.8ml/min  
 Column :SunFire C18, 4.6\*50mm,3.5um A-RP-314  
 Oven Temperature : 45

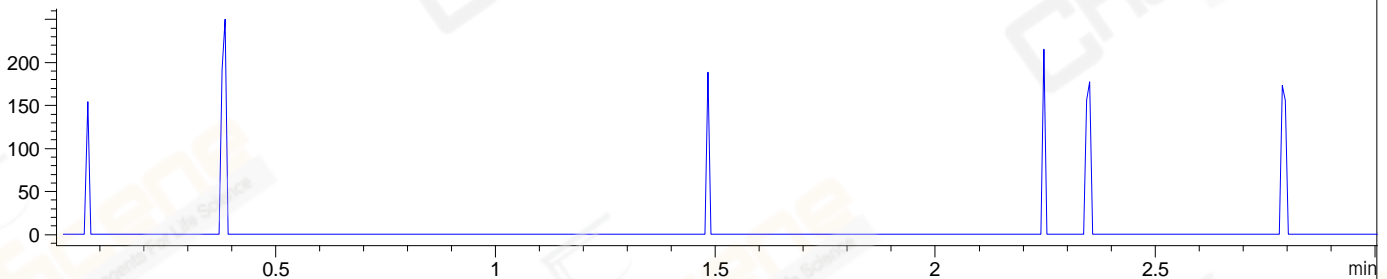
DAD1 B, Sig=214,4 Ref=off



MSD1 TIC, MS File ES-API, Pos, Scan, Frag: 70



Ion 89, MSD1 89, Target Mass 88 +H Positive, EIC=88.7:89.7



Integration Results for DAD1 B, Sig=214,4 Ref=off

RetTim	Width	Area	Height	Area%	MS (+)
1.78	0.04	624.93	292.93	98.45	60
1.90	0.01	0.47	0.84	0.07	60
2.05	0.03	9.37	5.44	1.48	60

Integration Results for MSD1 TIC, MS File

RetTim	Width	Area	Height	Area%	MS (+)
1.84	0.08	27812.20	6063.07	100.00	60