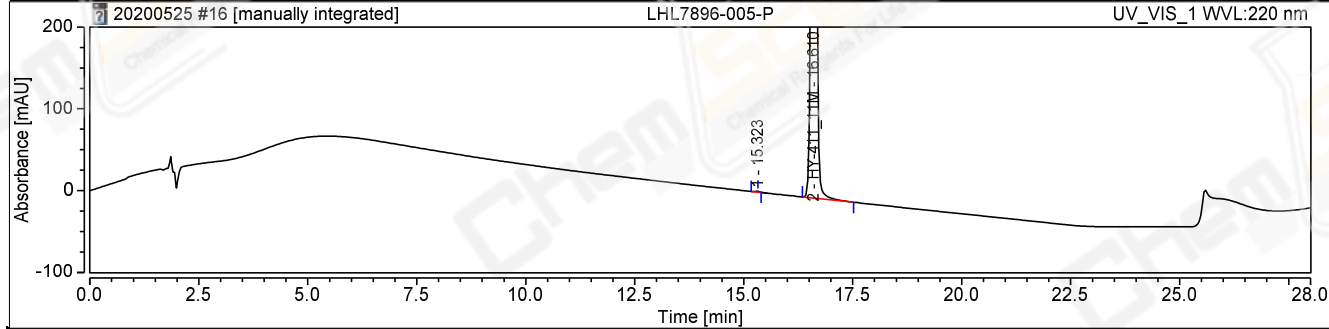
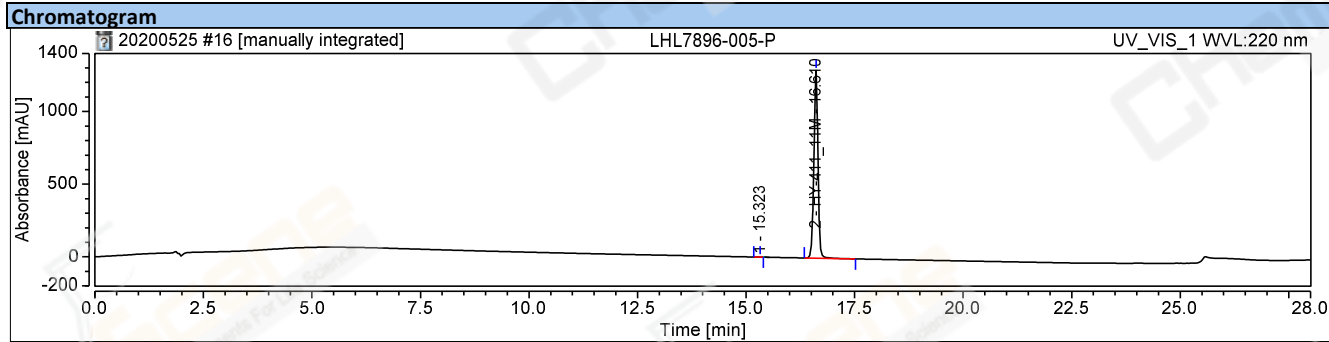


Chromatogram and Results

| Injection Details | | |
|---------------------------|---|--------------------------------|
| Injection Name: | LHL7896-005-P | Run Time (min): 28.00 |
| Vial Number: | GB1 | Injection Volume: 5.00 |
| Injection Type: | Unknown | Channel: UV_VIS_1 |
| CAS NO.: | 103440-52-4 A-RP-373 | Wavelength: 220 |
| Instrument Method: | 10-80A,20MIN,220NM.AC.1-2 | Bandwidth: 4 |
| Processing Method: | HY-411 | Dilution Factor: 1.0000 |
| Injection Date/Time: | 25/May/20 17:21 | seq.update_operator: hd |
| seq.creation_operator: | hd | instMeth.creation_operator: hd |
| procMeth.update_operator: | hd | rdf.update_operator: hd |
| instMeth.creation_time: | 09/Oct/2019 11:14 | |
| chm.rawpath: | chrom://hy363/DATA/Sequence/202005/20200525.seq/733.smp/UV_VIS_1.channel/UV_VIS_1.chm | |



| Integration Results | | | | | | | | | |
|---------------------|------------|--------------------|------------------|-----------------|-----------------|------------------|-------------|--------|------|
| No. | Peak Name | Retention Time min | Area mAU*s | Height mAU | Relative Area % | Resolution (USP) | Match | S/N | |
| n.a. | HY-411_4 | n.a. | n.a. | n.a. | n.a. | n.a. | n.a. | n.a. | n.a. |
| n.a. | EA | n.a. | n.a. | n.a. | n.a. | n.a. | n.a. | n.a. | n.a. |
| n.a. | HY-411_13C | n.a. | n.a. | n.a. | n.a. | n.a. | n.a. | n.a. | n.a. |
| n.a. | HY-411_6 | n.a. | n.a. | n.a. | n.a. | n.a. | n.a. | n.a. | n.a. |
| n.a. | HY-411_6M | n.a. | n.a. | n.a. | n.a. | n.a. | n.a. | n.a. | n.a. |
| n.a. | HY-411_11 | n.a. | n.a. | n.a. | n.a. | n.a. | n.a. | n.a. | n.a. |
| 1 | | 15.323 | 7.7264 | 1.212 | 0.0903 | n.a. | 997 | 7.7 | |
| 2 | HY-411_11M | 16.610 | 8547.9733 | 1290.571 | 99.9097 | 7.44 | 1000 | 5170.3 | |
| n.a. | HY-411_13 | n.a. | n.a. | n.a. | n.a. | n.a. | n.a. | n.a. | n.a. |
| Total: | | | 8555.6998 | 1291.783 | 100.0000 | | 1997 | | |