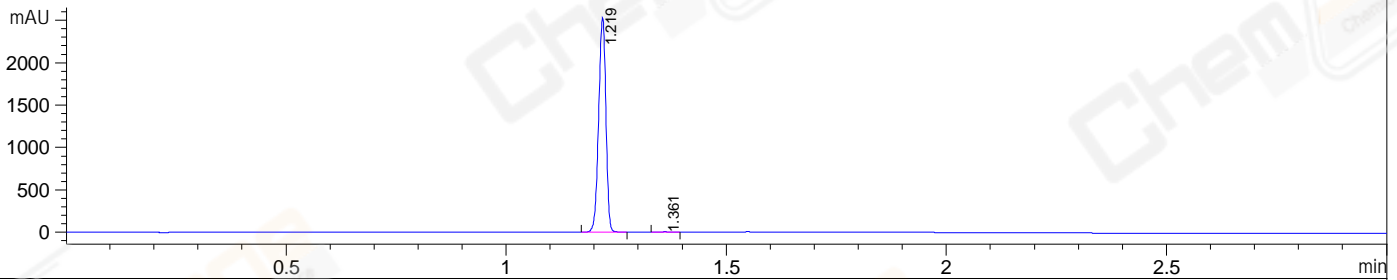
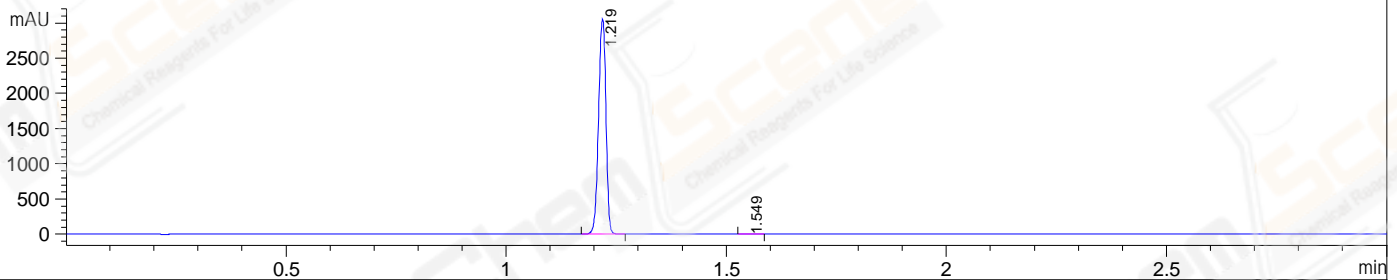


File E:\ChemStation\1\DATA\2023\2023-07\2023-07-16\CPK2023-714-65337-UPLC-MS-10-007972.D
 Injection Date : 16-Jul-23, 17:22:48 Tgt Mass(EZX) :
 Sample Name : CPK2023-714-65337 Location : P1-B-03
 Acq. Operator : LY_2278 Inj : 1
 Spec. Reported : MS Integration Inj Volume : 1 ul
 Acq. Method : E:\ChemStation\1\Methods\1-POS-UPLC3.0MIN(1.2)(0-2000).M
 Analysis Method : E:\CHEMSTATION\1\METHODS\1-POS-UPLC3.0MIN(1.2)(0-2000).M
 CAS NO. : 104-54-1 WalkUp method: '1-POS-3MIN(0-2000)' Project: CPK2023
 Method Info : Mobile Phase: A: water(0.01%TFA) B:ACN(0.01%TFA)
 Gradient: 5% to 95%B within 2.0 min
 Flow Rate :1.2ml/min
 Column :Shim-pack Scepter C18-120, 3.0*33mm,3um
 Oven Temperature : 45C

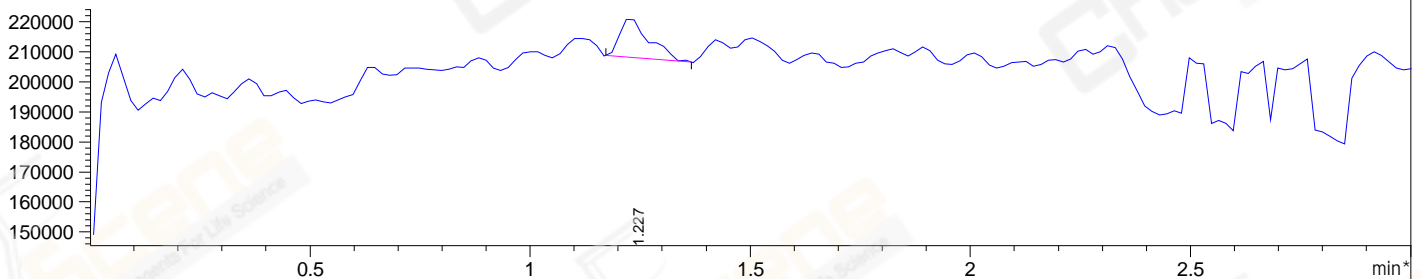
DAD1 A, Sig=214,4 Ref=off



DAD1 B, Sig=254,4 Ref=off



*MSD1 TIC, MS File ES-API, Pos, Scan, Frag: 70



Integration Results for DAD1 A, Sig=214,4 Ref=off

| RetTim | Width | Area | Height | Area% |
|--------|-------|---------|---------|-------|
| 1.22 | 0.02 | 2900.74 | 2528.71 | 99.80 |
| 1.36 | 0.02 | 5.90 | 4.31 | 0.20 |

Integration Results for DAD1 B, Sig=254,4 Ref=off

| RetTim | Width | Area | Height | Area% |
|--------|-------|---------|---------|-------|
| 1.22 | 0.02 | 3574.37 | 3054.01 | 99.82 |
| 1.55 | 0.02 | 6.54 | 4.96 | 0.18 |